

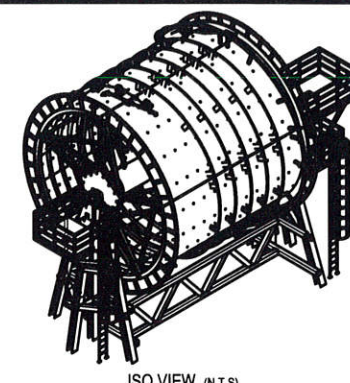
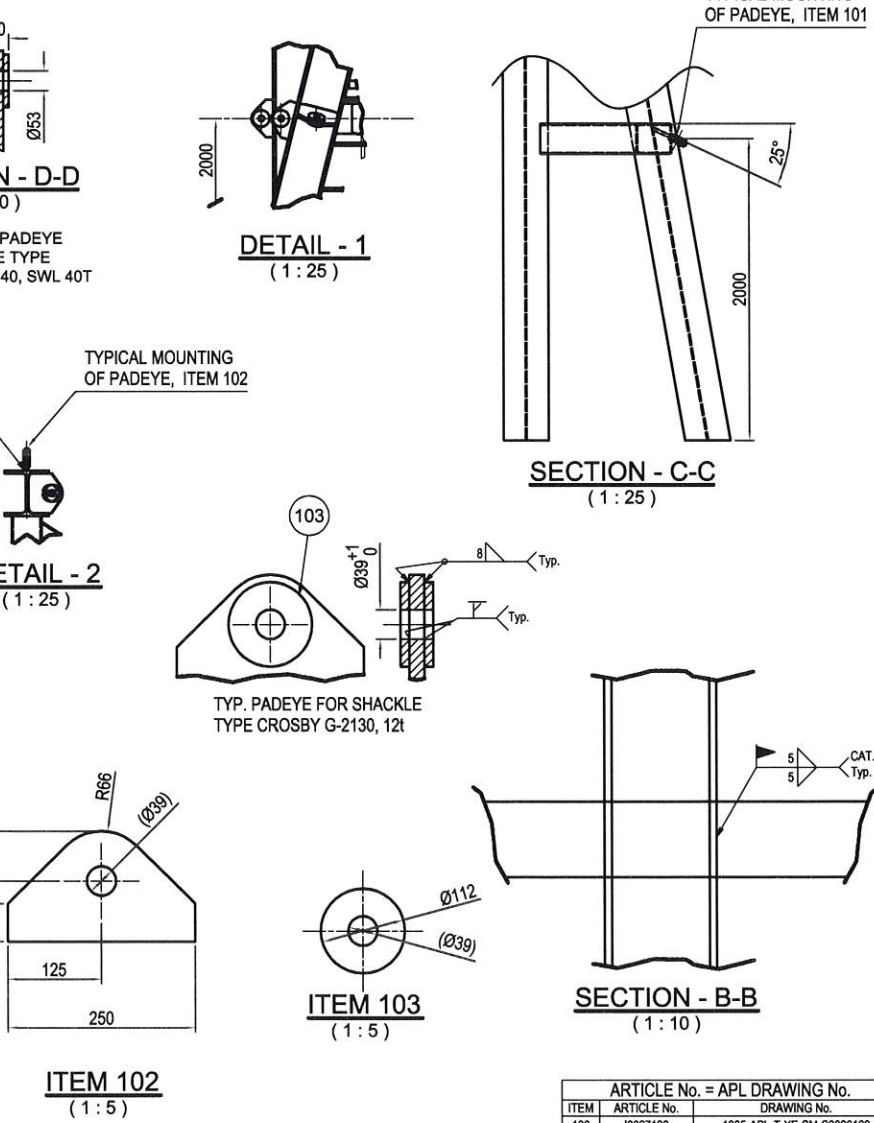
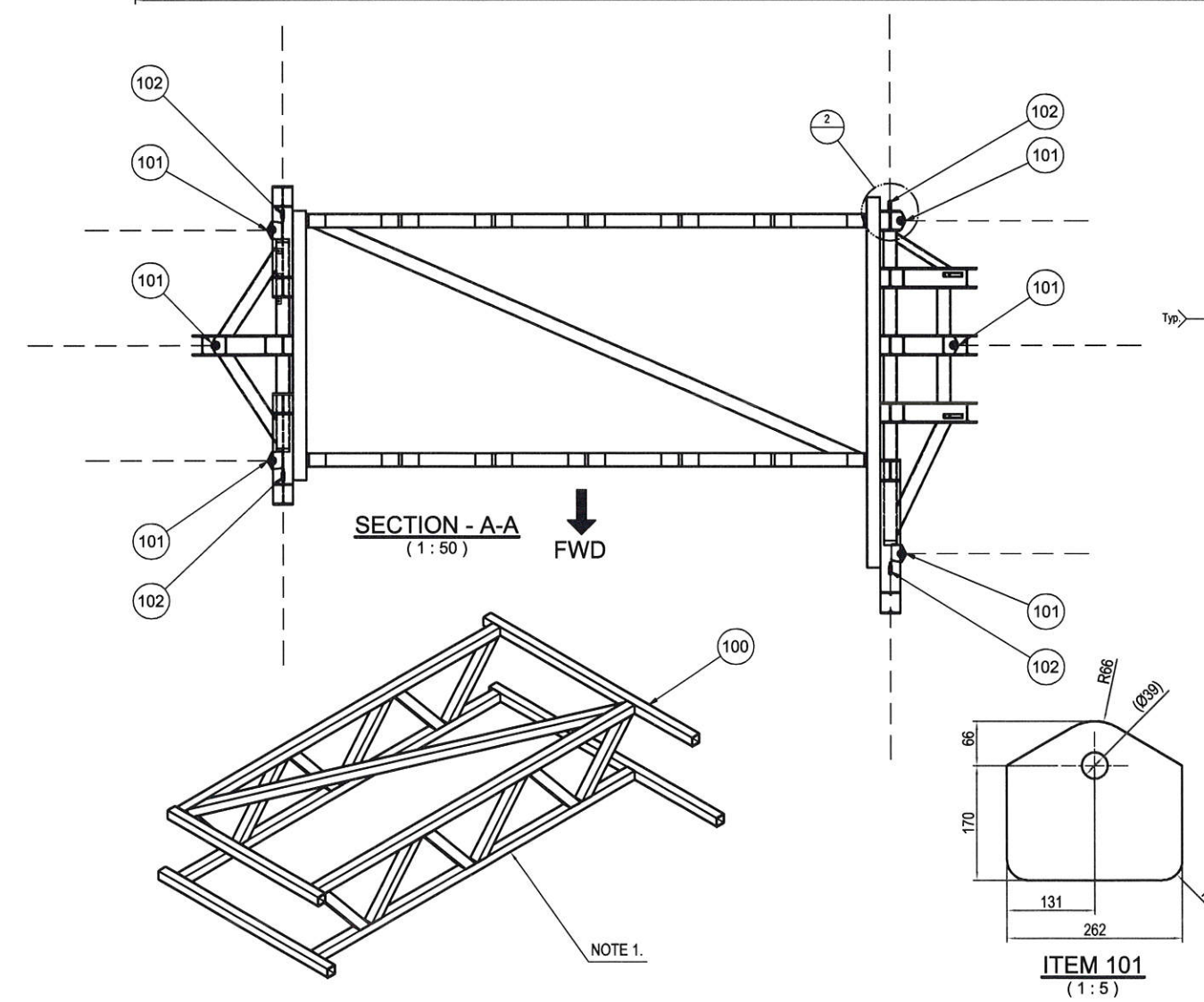
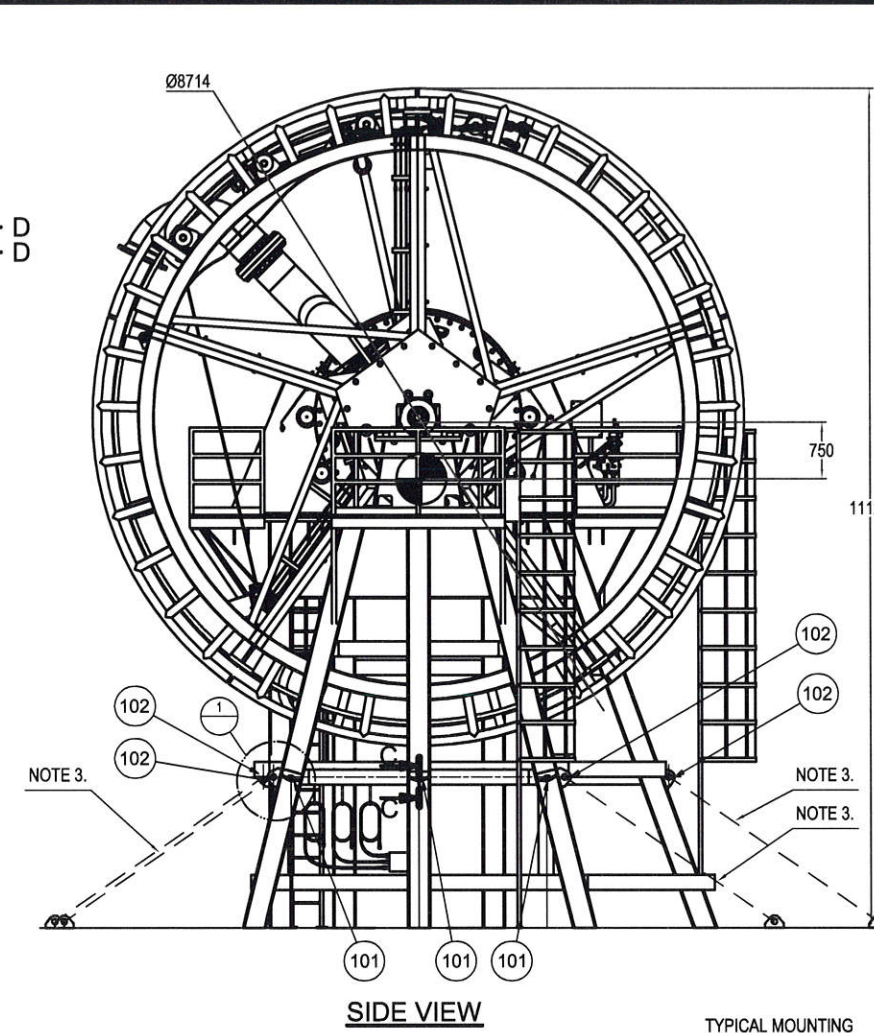
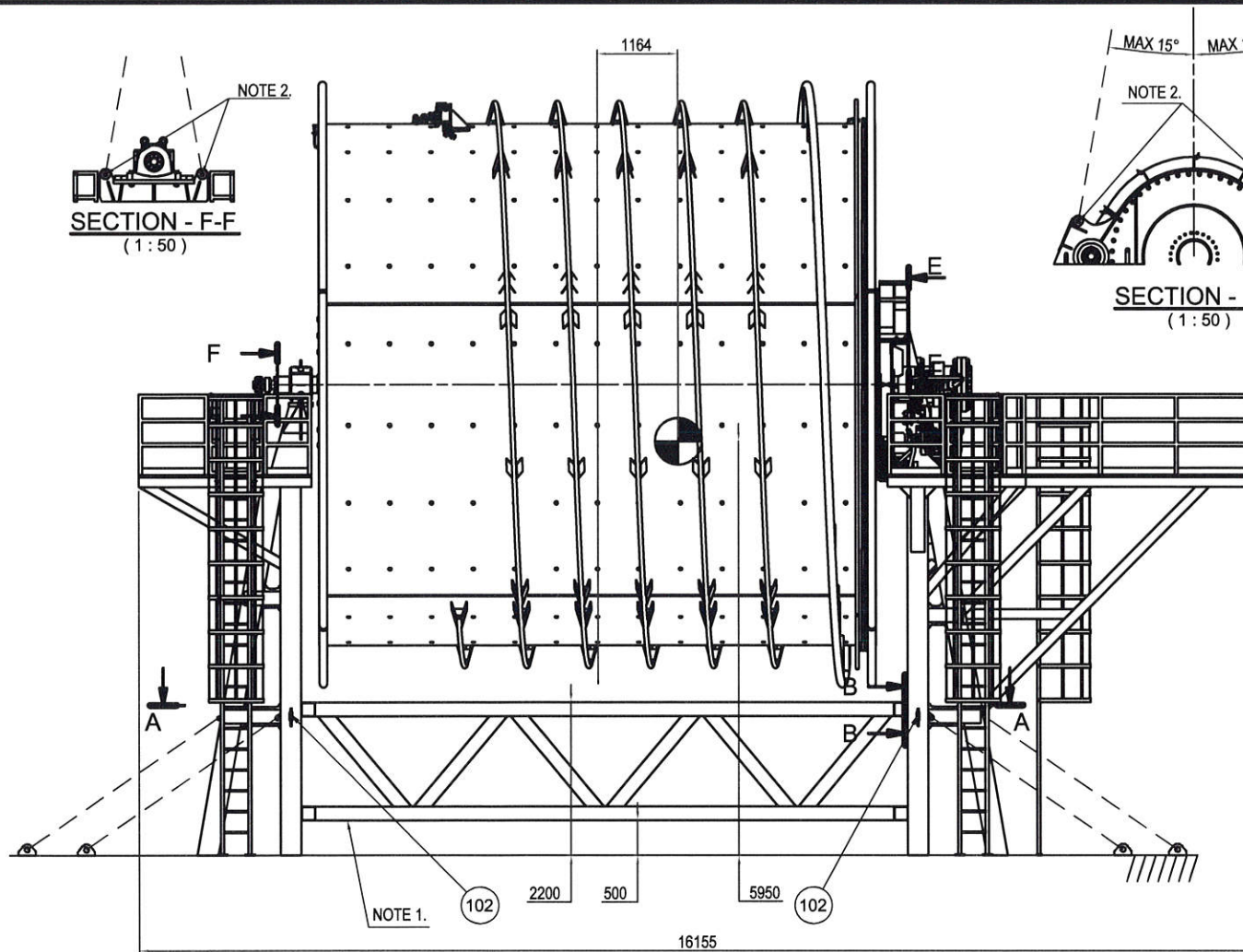
NOTES:

- FOR GENERAL INFORMATION SEE APL DWG.No. 1905-APL-Y-XX-AA-S0023195
- ALL EDGES TO BE ROUNDED MIN. 2mm.
- WIRE ROPE ON HOSE SECURING WINCH TO BE 24m LONG, DIAMETER Ø18mm.
- BACKUP REELING WIRE ROPE (ITEM 202) TO BE SECURED TO DRUM WITH STRAPS WHILE NOT IN USE.
- ALL BOLTS TO BE SECURED WITH LOCTITE 243 OR EQUIVALENT.
- TUBE ROUTING TO CRUDE LINE, YARD TO SUPPLY.

Item	QTY	Article no.	Description	Kg / each
217	2	I0026856	SPIRAL WOUND GASKET - CL 150	2 kg
216	80	I0027460	HEAVY HEX NUT	0 kg
215	40	I0027461	STUD BOLT	1 kg
214	1	I0028380	FLANGE WELDNECK - RF - CL 150	90 kg
213	32	I0027845	HEAVY HEX NUT - INCH	0 kg
212	16	I0026806	STUD BOLT	0 kg
211	8	I0003598	WASHER	0 kg
210	8	I0015641	HEX HEAD BOLT	0 kg
209	96	I0019494	HEAVY HEX NUT	0 kg
208	48	I0019493	STUD BOLT	1 kg
207	2	I0026895	SPIRAL WOUND GASKET - CL 300	3 kg
206	1	I0028108	FLAT GASKET - CL 150	0 kg
205	2	I0026858	SPIRAL WOUND GASKET - CL 150	0 kg
204	1	I0027064	FLANGE WELDNECK - RF - CL 150	7 kg
203	1	I0027210	SHACKLE	30 kg
202	1	I0027209	Ø40 x 170m WIRE ROPE, 6 x 36- IWRC, 2 x THIMBLE, GALVANIZED	1384 kg
201	1	I0026897	SWIVEL 4"	23 kg
200	1	I0026896	SWIVEL 20"	570 kg
110	1	I0027450	HOSE REEL - FLUSHING ELBOW	18 kg
109	1	I0027459	ESD VALVE	2661 kg
108	1	I0026925	PRESSURE GAUGE & TRANSMITTER	17 kg
107	1	I0028382	HOSE REEL - CRUDE LINE EXTERNAL	343 kg
106	1	I0027032	HEV SECURING WINCH HOSES AND FITTINGS	100 kg
105	1	I0024839	HOSE REEL - HOSES AND FITTINGS	349 kg
104	1	I0026160	HOSE REEL - PLATFORM DRIVE END	985 kg
103	1	I0026177	HOSE REEL - PLATFORM DRIVE END	3120 kg
102	1	I0024609	HOSE REEL - 150M - HOSE GUIDE SPIRAL	1965 kg
101	1	I0025153	HOSE REEL - 150M - HOSE REEL SECURING EQUIPMENT	780 kg
100	1	I0027346	HOSE REEL - 150M - ASSEMBLY	68952 kg

Rev.	Date	Reason for issue	Originator	Checked	Approved
0	12.08.2014	CONSTRUCTION	PAW	AAT	FTH
1	04.02.2014	INFORMATION	PAW	AAT	FTH

Reference:	SDS HOSE REEL - INSTALLATION	1905-APL-R-XE-SM-S0022806	Coated acc.to: (1897-APL-C-SA-0001)	Weight:	81567 Kg
Remove all burrs					
Surface roughness:	tolerance when not specified:	Standard reference:	Fabrication No.	Client Drawing No.	Rev.
ISO 1302	Welding: NS-ISO 2768-mK Casting: NS-ISO 13820 B/F	Weld symbols: NS-ISO 2553	1897-APL-C-SA-0001		
SAMSUNG			Mariner FSU		
0 12.08.2014 CONSTRUCTION			PAW	AAT	FTH
1 04.02.2014 INFORMATION			PAW	AAT	FTH
This drawing has been signed by an Electronic Document Management System. When printed it is considered as a for information only copy. The controlled copy is the screen version and it is the holder's responsibility that he/she holds the latest valid version.					
Date:	27.01.2014	Design:	AB / PAW	Method:	
Reference dwg:		Format:	A1	Scale:	1:50 U.N.O.
HOSE REEL - 150M			HOSE REEL - 150M - GENERAL ARRANGEMENT		
HOSE REEL - 150M - GENERAL ARRANGEMENT			APL™ APL Norway AS		
NOT TO BE REPRODUCED AND/OR MADE AVAILABLE TO A THIRD PARTY WITHOUT OUR WRITTEN CONSENT			Article No. / Rev. 10027347/0		
Replaced by:			Project ID: 1905 - APL - R - XD - SM - S0023449		



- NOTES:**
- STRUCTURE IS TO BE WELDED ON SITE TO THE HOSE REEL BEFORE SHIPPING.
ALL BEAMS ARE TO BE PLACED ACCORDING TO DWG. 1905-APL-T-XE-SM-S0026169 AND ADJUSTED TO THE STRUCTURE BEFORE ANY WELDING.
 - SHACKLES TO BE USED WHEN LIFTING THE STRUCTURE:
4x CROSBY G-2140 (SWL 40T)
SPREADER BAR IS TO BE USED WHEN LIFTING.
REF. SECTION E & F FOR LIFTING POINTS.
 - LASHING EQUIPMENT FOR TRANSPORT / SEA FASTENING OF THE REEL,
NOT APL/NOV SCOPE OF SUPPLY.
 - FOR GENERAL INFORMATION, SEE DWG NO: 1905-APL-Y-XX-AA-S0023195
 - ALL PADEYE WELDS TO HAVE FULL PENETRATION. U.N.O.
 - ALL PADEYE WELDS TO BE INSPECTION CATEGORY I U.N.O.

Item	QTY	Article no.	Description	Standard	Material	Dimension	Kg / each
103	20	10027205	PLATE	EN10025	S355	PL 12	1 kg
102	4	10027205	PLATE	EN10025	S355	PL 20	4 kg
101	6	10027196	PLATE	EN10025	S355	PL 20	8 kg
100	1	10027198	TRANSPORTATION FRAME	APL			3113 kg

Rev.	Date	Reason for issue	Originator	Checked	Approved
0	26.05.2014	CONSTRUCTION	TAAS		

12.05.2014	AB/TAAS	Method	Format	Scale	U.N.O.
10027247					

SDS HOSE REEL	HOSE REEL TRANSPORTATION & SEA FASTENING FRAME ASSEMBLY INSTALLATION	APL™	APL Norway AS
1905 -APL-T-XE-SM-S0026168			