

SPONSORS:



AL SALEM



YORK designs and manufactures a complete line of heating, ventilation and air conditioning systems for the residential and light commercial markets. Please select this area of the website to learn more about residential products including information on Product warranties.



YORK provides heating, air conditioning, process cooling solutions, equipment maintenance and repair service to a full spectrum of commercial and industrial facilities. Please select this area of the website to learn more about our commercial products including technical specifications and training.



YORK Refrigeration provides industrial and marine refrigeration systems, control systems, equipment and services throughout the world. Please select this area of the website to learn more about refrigeration products including such brands as Frick, Sabroe, and YORK brand names.

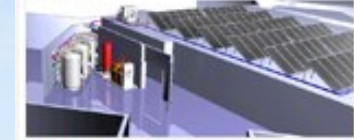
www.johnsoncontrols.com



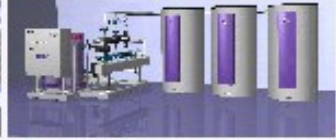
Boiler



Steam



Solar



Electro

www.ecotherm.com

BRONZE SPONSORS:



WHY MESH WITH PSME CRSA?

DISTINCT PROPERTIES THAT MAKE US APART FROM THE REST

HIGH OCTANE NUMBER. With a membership pool of able, qualified and tested engineers who serve the chapter as technical mentors and advisers and who are leaders in their respective multi-national companies, PSME CRSA never worries about Saudization and globalization. We are more than prepared to succeed in the global competition.

SELF-LUBRICATING. Being a service society, we look after our fellow brother mechanical engineers' welfare. In our gear train of members meshing with each other to perfection each oils the path of the next. In CRSA there is no such thing as wear and tear.

HARDNESS. Move over Rockwell, Brinell, Vickers and Knoop. PSME CRSA is built to last, overcome and champion all adversities that may create a permanent dent in any other organization. Proven by time, we are solid and united against all odds.

TOUGHNESS & RESILIENCY. Elastic limit and fracture point are virtually inexistent in PSME CRSA. The amount potential energy innate in us is perpetual. Not only do we excel technically on a global scale but more so as socio-civic volunteers, nationalists, peace and green movement advocates and heroes of the new millennium. Name 'it' and we got it in our veins.

MALLEABILITY & DUCTILITY. Hammer us with challenges and stretch us with obstacles and we will never crack or rupture under pressure.

STIFFNESS. PSME CRSA is made to resist any deformation imaginable. Our resolute is to achieve success in the most prideful and honorable manner. Aside from integrity, humility is on the topmost level of the hierarchy of virtues exemplified by our leaders.

NEED WE SAY ANYTHING MORE?

Join PSME CRSA now or be left behind.

www.psmecrsa.org

It's more fun in
PSME CRSA

No. 1 International
PSME Chapter



Philippine Society of Mechanical Engineers
CENTRAL REGION SAUDI ARABIA
RIYADH, CHAPTER
(AFFILIATED TO PSME-NATIONAL)
Chartered 2002
Website: psmecrsa.org

PHILIPPINE SOCIETY OF MECHANICAL ENGINEERS
CENTRAL REGION SAUDI ARABIA
www.psmecrsa.org

Affiliated to:

4TH MIDYEAR MEMBERSHIP MEETING

@ Sheraton Hotel, KSA
June 20, 2014

THEME: "PSME CRSA : Benchmarking Global Competitiveness thru Firm Dedication,
Exemplary Service and Professional Advancement."

SPONSORED BY:

CO-SPONSORS:

PSME PRAYER



Heavenly Father, Maker of Heaven and Earth, We thank You for the Filipino Mechanical Engineer, for our profession, and for our organization, the PSME. You have sown us as seeds, scattered here in abroad as PSME Engineers-humble planners, designers and builders of all things mechanical- our proud testament to the Glory of Your Creation. We bring before you the fruits of our profession, forged by the fire and burning passion of the PSME mission.

PROFESSIONALISM- to help us maintain the integrity of the Engineering Profession, please keep our hearts true to the highest ethical principles of our field.

SERVICE - to enable us to contribute to the enhancement of science and technology; we pray for all Filipino Mechanical Engineers to work together as one in shaping the economic growth of our country.

MOTIVATION - to uplift the Engineering Profession; please help us to promote fellowship and cooperation among all Filipino Mechanical Engineers and to in still nationalism among PSME members.

EXCELLENCE - to enable us to become outstanding PSME members. We pray for all Filipino Mechanical Engineers to actively contribute to the advancement of the profession, to be recognized globally as we develop the talents You have given us. Help us to provide sustainability to the changing world. May the PSME bring all the Filipino Mechanical Engineers - and as one- stand united as beacons of strength and stability to the world. All these we pray through You, our **Heavenly Father**, forever and ever .. AMEN



PSME CREED

We, the Mechanical Engineers of the Philippines
Conscious of our responsibilities
to God,
our Country and fellowmen
Affirming our adherence
to the Code of Ethics for Mechanical Engineers
Desirous in participating
and contributing in the Social,
Economic and Industrial growth of our country,
Determined to support one organization
that shall embrace the
Mechanical Engineering profession
Have resolved to unite to accomplish these aims
by constituting a National Organization
of Mechanical Engineers.



PSME CORE VALUES

1. I am a person of **INTEGRITY**. I act with honesty, **transparency**, and accountability. I do the right things, the right way.
2. I maintain **PROFESSIONALISM** at all times with high **respect** For others, observing proper conduct, following the code of ethics, honoring **commitments**, and acting fairly and with dignity.
3. I strive for **EXCELLENCE** thereby achieving the highest standard of performance in all my undertakings.
4. I internalize **TEAMWORK**. I act with sense of urgency, mindful of entrepreneurial spirit and work with **unity**, cooperation, collaboration, synergy and convergence towards a common goal.
5. I exercise **LEADERSHIP** with **humility** and characterized by **integrity**. I lead by example, walk the talk and celebrate **success** as owned by all the members of the team.
6. I embody **CONCERN FOR STAKEHOLDERS** especially the welfare of our members, employees and all we work for and those who work for us.
7. I am an integral part of a **RESILIENT, NATIONALISTIC** and **GODFEARING** Organization. I weather the odds and implore peace, harmony, kindness, good work, love of country and social responsibility.

Master of Ceremony: TM Harris /TM Jonathan

8:00-9:00 AM Registration & Coffee Break

Engr. Jetpril Palomo & Engr. Harold Macanip

9:00-9:30 AM National Anthem Engr. Candido Palino

Invocation Engr. Romelito Caparaz

PSME Creed Engr. Jose Beton

PSME Core of Values Engr. Rodel Panes

9:20-9:55 AM Welcome & Opening Remarks

Engr. Rowell Somido

9:35-9:40 AM Introduction of Guest Speaker

By: Engr. Sammy Fernandez

9:40-9:55 AM Inspirational Speech

Hon. Ezzedin H. Tago Phil. Ambassador to KSA

9:55-10:00 AM Introduction of Guest Speaker

By: Engr. Neil Reguine

10:00-10:15 AM Inspirational Speech

Engr. Mario Balboa—PCEA Chairman

10:15-10:20 AM Introduction of Guest Speaker

By: Engr. Lorenzo Payunan

10:20-10:35 AM Inspirational Speech

Sec. General Dr. Ghazi Al Abasi, Saudi Council of Engineers

10:35-10:40 AM Introduction of Guest Speaker

By: Engr. Jay Rocas

10:40-10:55 AM Inspirational Speech

Engr. Ramon A. Picornell Jr.

10:55-11:00 AM Introduction of Technical Speaker

By: Engr. Francis Marquez

11:00-12:00 PM Technical Speaker by

AL SALEM JOHSON CONTROLS INC

12:00-12:15 PM Raffle Draws (Consolation Prices)

By: Engr. Gleen Bastida

12:15-1:30 PM LUNCH BREAK

1:30-1:35 PM Introduction of Technical Speaker

By: Engr. Romelito Caparaz

1:35-2:35 PM Technical Speaker by

ALMAYMANAH TRADING/ECOTHERM

2:35-2:50 PM COFFEE BREAK

2:50-3:50 PM Plenary Session

3:50-4:00 PM Oath Taking of New PSME-CRSA Members

Engr. Ramon Picornell Jr.

4:00-4:10 PM Oath Taking of "The Governor" Editorial Board

Engr. Rowell Somido

4:10-4:20 PM Q1 & Q2 Chapter's Accomplishment Report

Pres. Rowell Somido, EVP, VPI & VPE

4:20-4:30 PM Raffle Draws

4:30-4:45 PM Issuance of Certificates

Engr. Ramon Picornell Jr. / PSME-CRSA Past Presidents

4:45-5:00 PM Closing Remarks

Engr. Lorenzo Payunan



PSME CRSA OFFICERS YEAR 2014

ROWELL G. SOMIDO, PME
President

JAY A. ROCES, ME
Executive Vice President

SAMMY MD. D. FERNANDEZ, PME
Vice President Internal Affairs

LORENZO LORRY D. PAYUNAN, PME
Vice President External Affairs

RODEL A. PANES, ME
Secretary

ORBEN M. DELA CRUZ, ME
Treasurer

MILO PER I. PAAT, PME
Auditor

ERIC B. GAVARES, PME
PRO

JESSIE B. MANABAT, PME
Business Manager

JETPRIL N. PALOMO, ME
Membership Director

CANDIDO F. PALINO, ME
Technical Affairs Director

ROMELITO CAPARAZ, PME
Plant Tours Director

FRANCIS N. MARQUEZ, ME
Professional Enhancement Director

GLEEN F. BASTIDA ME
Sports Director

HAROLD F. MACANIP, PME
Information Technology Director

Immediate Past President
NEIL R. REGUINE, PME

Past Presidents

JULIUS CESAR D. DELA TORRE, PME 2012

EDGAR M. BONOTANO, PME 2011

RESTITUTO S. SIBUG, PME 2010

FORTUNATO C. SIMBULAN, PME 2009

RAMY E. PUDADERA, PME 2008

GEORGE F. BAHAYNON, PME 2007

ENGR. GENEROSO P. ASUNCION 2006

ENGR. JEFFRY S. AGURA 2005

PEDRO P. CALIWAG JR. PME 2004

Charter President
RIOLANDO V. PEREZ, PME



LEADERSHIP • RESPONSIBILITY • SERVICE

