

Technical Corner

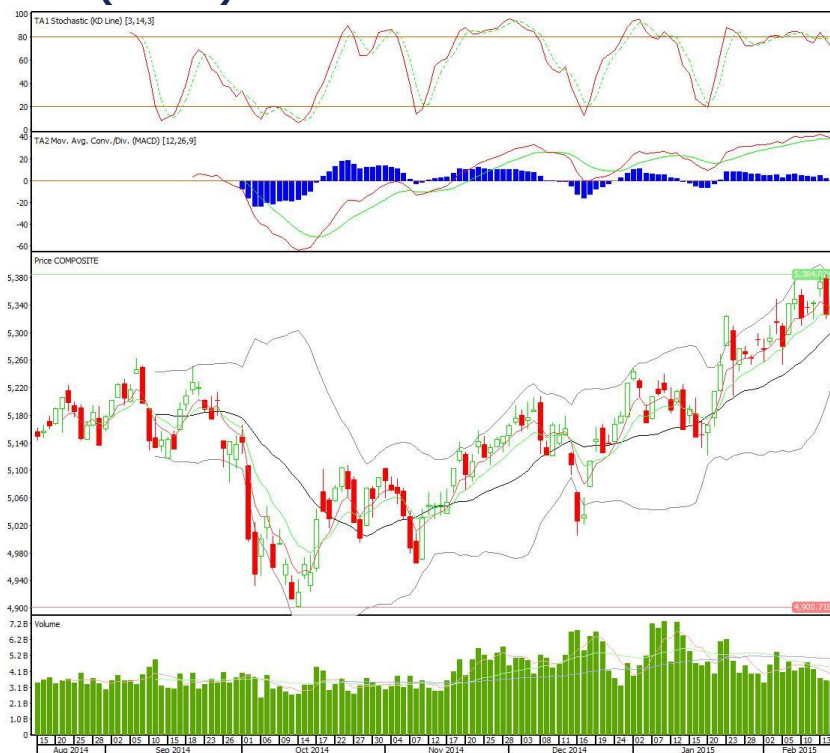
18 Februari 2015

IHSG

Range: 5.320 –5.355

---Indeks ditutup di atas EMA10 yang merupakan *support* kedua untuk tren bullishnya dan membentuk pola *small bullish candle* yang menandakan kekuatan beli mulai dominan namun tidak terlalu kuat. Stochastic berada pada area netral dan MACD positif. Target kenaikan indeks pada level 5.355 kemudian 5.375 dengan *support* di 5.320 dan 5.300.

IHSG (5.338)



Bank Negara Indonesia

Rekomendasi: Spec BUY

---Candle masih mampu bertahan di atas EMA10 dan membentuk pola doji yang merupakan sinyal *indecision*, stochastic berada pada area netral sedangkan MACD positif. Target kenaikan harga di level 6.700 kemudian 6.750 dengan *support* di 6.600, *cut loss* jika *break* 6.550.

BBNI (6.650)



Indo Tambangraya Megah

Rekomendasi: BUY

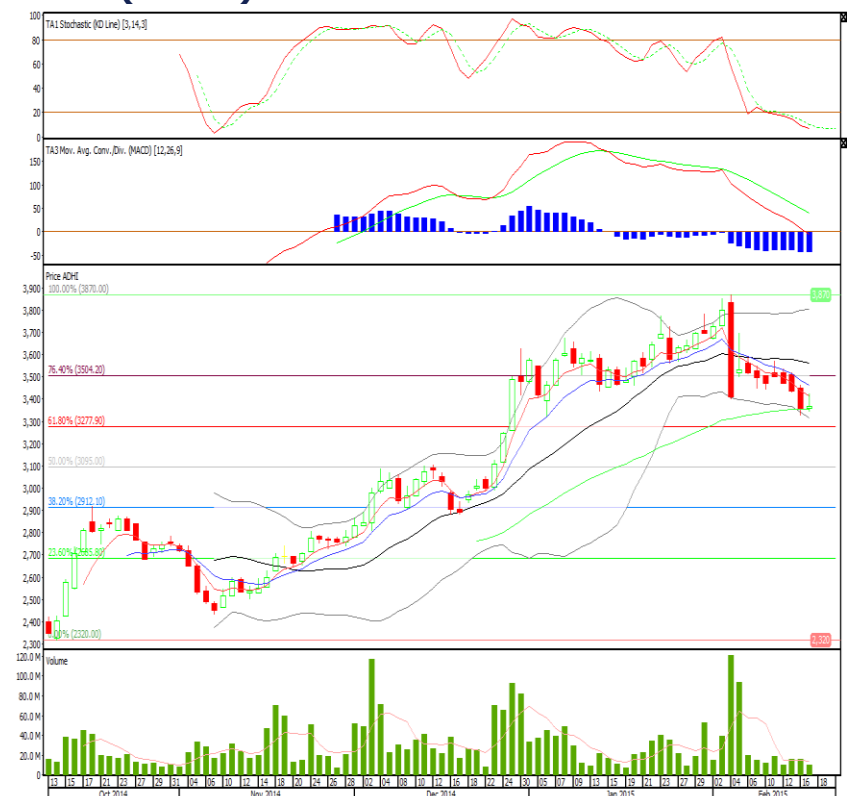
---Setelah *break resist* EMA50, harga terus *rally* meskipun stochastic *overbought*. MACD positif sehingga mengkonfirmasi *trend bullish*.

Target harga 19.125 kemudian 20.600. *Support* 18.200, *cut loss* jika *break* 17.275.

ITMG (18.425)



ADHI (3.365)



Adhi Karya

Rekomendasi: BUY

---Candle tertahan di *support* EMA50. Stochastic *oversold* sementara MACD *break centre line*. Jika mampu bertahan di atas 3.350 maka bisa melakukan pembelian dengan target 3.520 kemudian 3.570. *Cut loss* jika *break* 3.330.

Head Office**PT INDO PREMIER SECURITIES**

Wisma GKBI 7/F Suite 718

Jl. Jend. Sudirman No.28

Jakarta 10210 - Indonesia

p +62.21.5793.1168

f +62.21.5793.1167

ANALYSTS CERTIFICATION.

The views expressed in this research report accurately reflect the analyst's personal views about any and all of the subject securities or issuers; and no part of the research analyst's compensation was, is, or will be, directly or indirectly, related to the specific recommendations or views expressed in the report.

DISCLAIMERS

This research is based on information obtained from sources believed to be reliable, but we do not make any representation or warranty nor accept any responsibility or liability as to its accuracy, completeness or correctness. Opinions expressed are subject to change without notice. This document is prepared for general circulation. Any recommendations contained in this document do not have regard to the specific investment objectives, financial situation and the particular needs of any specific addressee. This document is not and should not be construed as an offer or a solicitation of an offer to purchase or subscribe or sell any securities. PT. Indo Premier Securities or its affiliates may seek or will seek investment banking or other business relationships with the companies in this report.