

Technical Corner

28 November 2014

IHSG

Range: 5.125 –5.175

---Indeks masih bertahan di *up trend channel* dan membentuk pola *white opening marubozu* disertai dengan volume yang cukup besar di atas VMA5. Stochastic *overbought* dan MACD berada di area positif. Target penguatan indeks di level 5.175 kemudian 5.200 dengan *support* di 5.125 dan 5.100.

IHSG (5.145)



Indofarma

Rekomendasi: Spec Buy

---Candle bertahan di atas MA5 yang merupakan *bullish support line* dan membentuk pola *long white marubozu* disertai dengan volume yang cukup besar mengindikasikan potensi kenaikan masih akan berlanjut. Stochastic *overbought* dan MACD berada di area positif. Target kenaikan harga di level 305 kemudian 310 dengan *support* terdekat di level 282, *cut loss* jika *break* 275.

INAF (291)



BW Plantation

Rekomendasi: Buy On Weakness

---Candle *break support* EMA20 disertai dengan volume yang tinggi. Harga tertahan oleh *support trend-line* namun jika tembus maka bakal *testing support* 460 kembali.

Level *entry* dari 460 kemudian 448. *Cut loss* jika *break & close* dibawah 420.

BWPT (476)



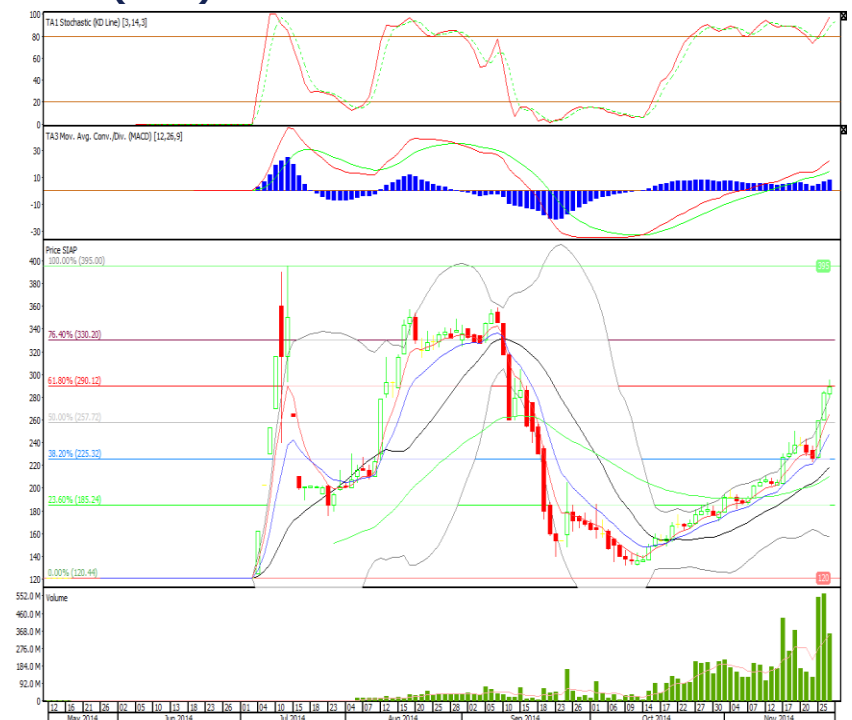
Sekawan Intipratama

Rekomendasi: Sell On Strength

---Harga masih *uptrend* dengan *rally* cukup panjang sehingga stochastic *overbought* cukup lama. MACD positif namun berada di atas *upper-band* sehingga rawan *profit taking*.

Target harga untuk jual di level 304 kemudian 317. *Support* terdekat 275.

SIAP (289)



Head Office**PT INDO PREMIER SECURITIES**

Wisma GKBI 7/F Suite 718

Jl. Jend. Sudirman No.28

Jakarta 10210 - Indonesia

p +62.21.5793.1168

f +62.21.5793.1167

ANALYSTS CERTIFICATION.

The views expressed in this research report accurately reflect the analyst's personal views about any and all of the subject securities or issuers; and no part of the research analyst's compensation was, is, or will be, directly or indirectly, related to the specific recommendations or views expressed in the report.

DISCLAIMERS

This research is based on information obtained from sources believed to be reliable, but we do not make any representation or warranty nor accept any responsibility or liability as to its accuracy, completeness or correctness. Opinions expressed are subject to change without notice. This document is prepared for general circulation. Any recommendations contained in this document do not have regard to the specific investment objectives, financial situation and the particular needs of any specific addressee. This document is not and should not be construed as an offer or a solicitation of an offer to purchase or subscribe or sell any securities. PT. Indo Premier Securities or its affiliates may seek or will seek investment banking or other business relationships with the companies in this report.