

TECHNICAL CORNER

Ikhsan Binarto

ikhsan.binarto@ipc.co.id

Muhammad Wafi

wafi@ipc.co.id

Daily Update

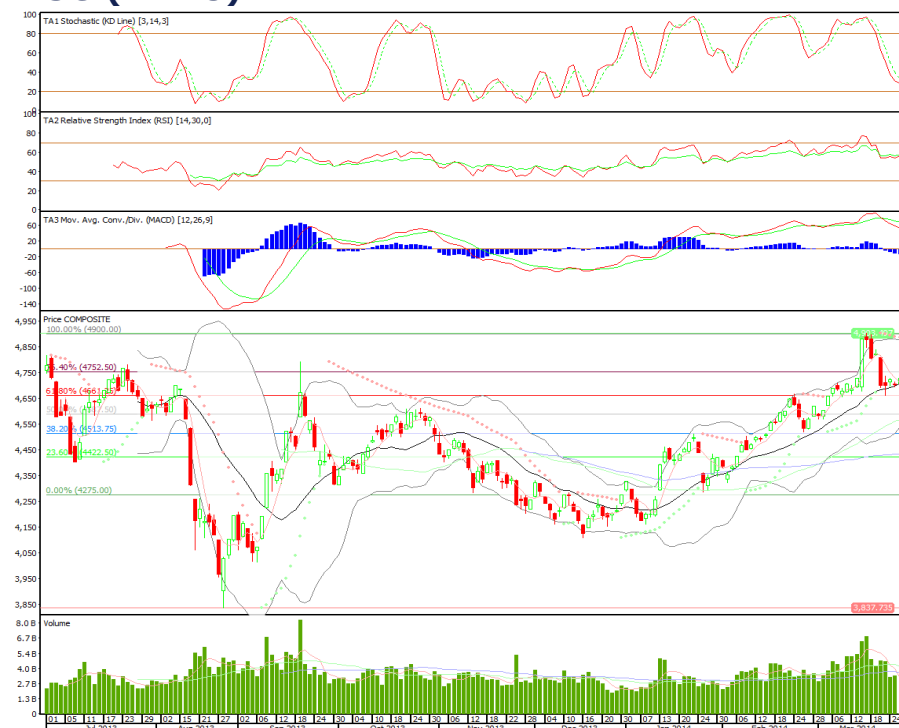
IHSG

Range: 4.660 – 4.775

---Indeks kembali naik namun masih belum keluar dari fase *minor sideways*. Stochastic dan MACD negatif sementara RSI berpotensi *crossing*.

IHSG diperkirakan akan *mixed* cenderung melemah dengan *resist* di 4.725 sementara *support* 4.650.

IHSG (4.728)



Eksplorasi Energi Indonesia

Rekomendasi: Spec BUY

---Harga naik dengan *volume* dan berhasil tutup di area *upperband* namun tertahan *resist* MA50. Stochastic, RSI, dan MACD positif. Relatif aman untuk *entry* selama harga diatas *support* 240 dengan *resist* di 255 kemudian 265. *Stoploss* jika *break & close* dibawah 235.

CNKO (246)

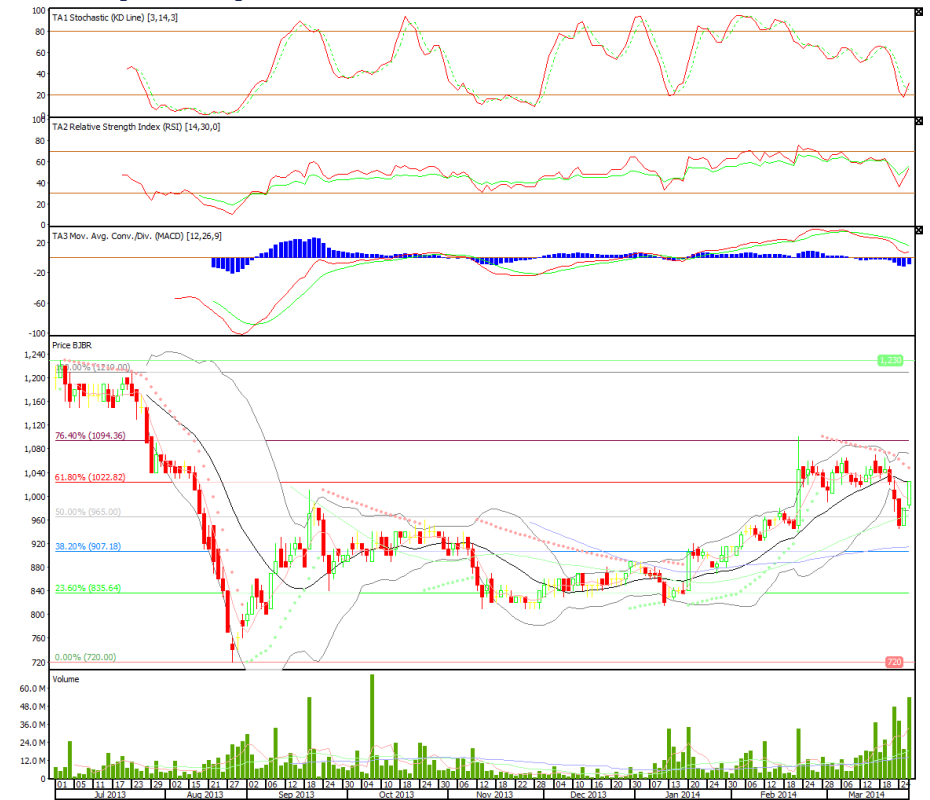


Bank BJB

Rekomendasi: Spec BUY

---Harga *rebound* disertai *volume* setelah *test support* MA50 namun tertahan MA20. Stochastic positif sementara RSI dan MACD berpotensi *goldencross*.

Bisa *entry* jika harga bertahan diatas 1.025 dengan *resist* di 1.070-1.100. *Stoploss* jika *break & close* dibawah *support* 970.

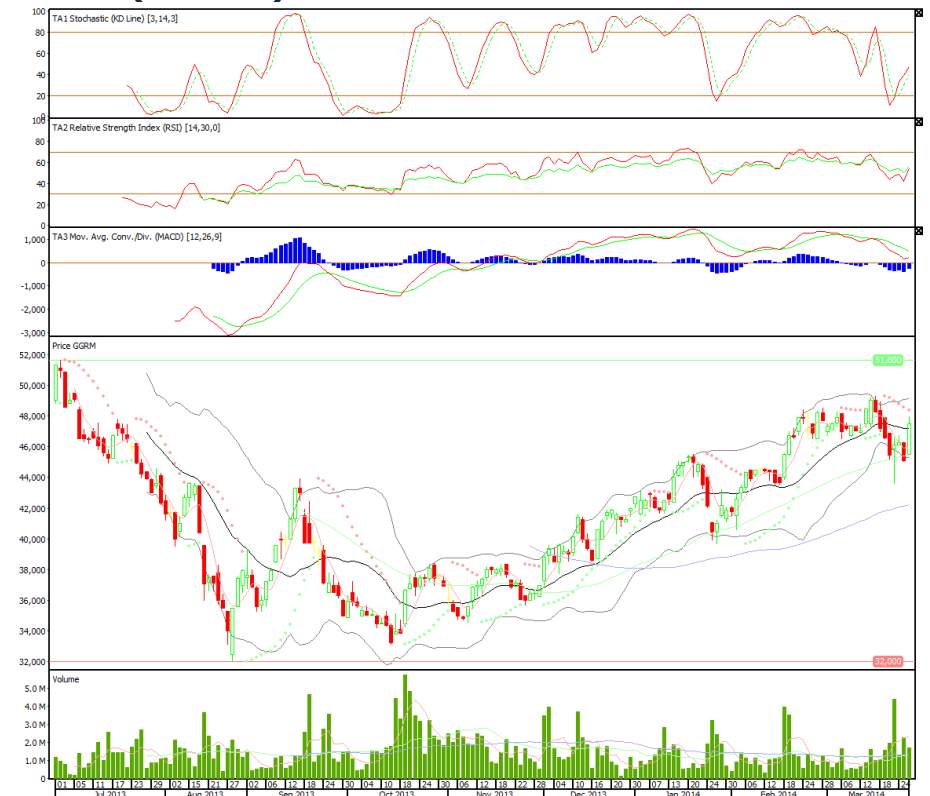
BJBR (1.025)

Gudang Garam

Rekomendasi: Sell On Strength

---Harga *rebound* setelah *test support* MA50 namun tidak disertai *volume* dan tertahan MA20. Stochastic positif sementara RSI dan MACD berpotensi *goldencross*.

Resist di 48.950 sementara *support* di 46.200 kemudian 45.450.

GGRM (47.500)

PT INDO PREMIER SECURITIES

Wisma GKBI 7/F Suite 718

Jl. Jend. Sudirman No.28

Jakarta 10210 - Indonesia

p +62.21.5793.1168

f +62.21.5793.1167

INVESTMENT RATINGS

Buy : Expected total return of 10% or more within a 12-month period

Hold: Expected total return between -10% and 10% within a 12-month period

Sell : Expected total return of -10% or worse within a 12-month period

ANALYSTS CERTIFICATION. The views expressed in this research report accurately reflect the analyst's personal views about any and all of the subject securities or issuers; and no part of the research analyst's compensation was, is, or will be, directly or indirectly, related to the specific recommendations or views expressed in the report.

DISCLAIMER: This research is based on information obtained from sources believed to be reliable, but we do not make any representation or warranty nor accept any responsibility or liability as to its accuracy, completeness or correctness. Opinions expressed are subject to change without notice. This document is prepared for general circulation. Any recommendation contained in this document does not have regard to the specific investment objectives, financial situation and the particular needs of any specific addressee. This document is not and should not be construed as an offer or a solicitation of an offer to purchase or subscribe or sell any securities. PT. Indo Premier Securities or its affiliates may be involved in transactions contrary to any opinion herein to make markets, or have positions in the securities recommended herein. PT. Indo Premier Securities or its affiliates may seek or will seek investment banking or other business relationships with the companies in this report.