

## TECHNICAL CORNER

**Ikhsan Binarto**

ikhsan.binarto@ipc.co.id

**Muhammad Wafi**

wafi@ipc.co.id

**Daily Update**

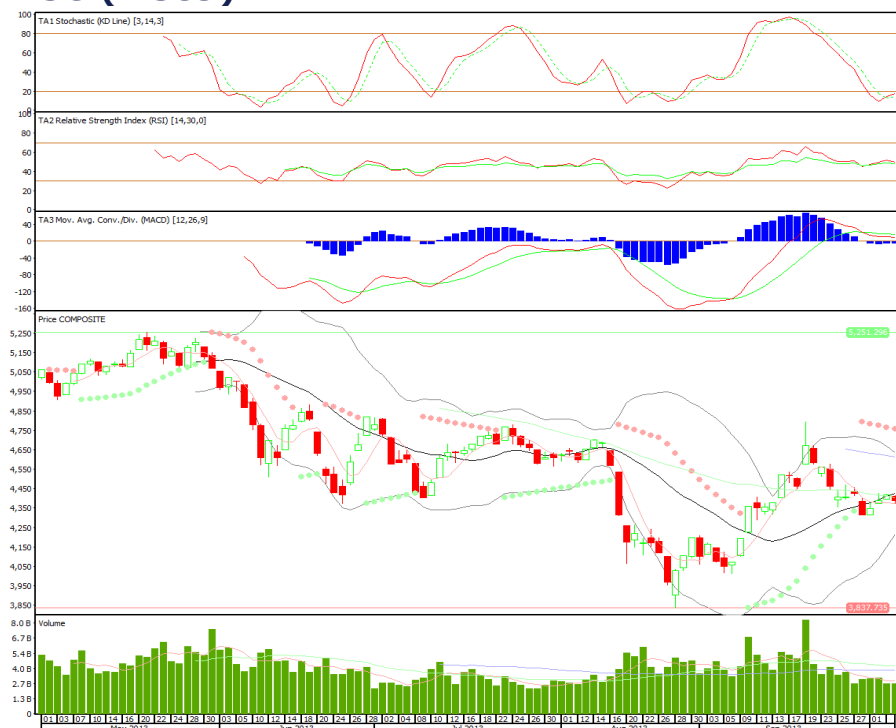
### IHSG

**Range : 4.375 – 4.425**

---Indeks bergerak di area *sideways* sempit antara MA5 & MA20. Stochastic positif di area *oversold* sementara RSI dan MACD *flat*.

Indeks diperkirakan bergerak *mixed* cenderung menguat dengan *support* 4.375 dengan *resistance* 4.425. Indeks masih menyisakan *gap* di level 4.191.

### IHSG (4.389)



### Timah (Persero)

**Rekomendasi: Buy On Weakness**

---Harga turun 4 hari terakhir namun masih dalam fase *uptrend*. Stochastic negatif sementara RSI dan MACD *deathcross*.

*Support* dan *entry* level MA20 di 1.500 dengan *resist* di 1.610. *Stoploss* jika *break & close* dibawah 1.480.

### TINS (1.530)



## Semen Indonesia (Persero)

**Rekomendasi: Buy On Weakness**

---Harga masih *downtrend* dengan *volume* transaksi yang cukup besar sehingga *break support trend line*. Stochastic *oversold* dan MACD negatif. Level untuk *entry* mulai *support* 12.700 sampai *gap* di 12.550. Target harga 13.250, *cut loss* jika *break* dibawah 12.200.

**SMGR (12.900)****INKP (1.470)**

## Indah Kiat Pulp &amp; Paper

**Rekomendasi: Sell On Strength**

---Harga *break out resist* 1.300 dengan *volume* yang sangat tinggi sehingga *break upper band*. Peluang menguat masih terbuka dengan target jual di *resist* 1.580-1.600 sedangkan *support* 1.360.



**PT INDO PREMIER SECURITIES**

Wisma GKBI 7/F Suite 718  
Jl. Jend. Sudirman No.28  
Jakarta 10210 - Indonesia  
p +62.21.5793.1168  
f +62.21.5793.1167

## Institutional Equity & Private Client Group

<b>Benny B. Soebagjo</b>	Head of Equities	benny.soebagjo@ipc.co.id
<b>Angkula Ruriawan</b>	Equity Sales	angkula.ruriawan@ipc.co.id
<b>Alexander Salim</b>	Equity Sales	alexander.salim@ipc.co.id
<b>Edward Azizy</b>	Equity Sales	edazizy@ipc.co.id
<b>James Darmawan</b>	Equity Sales	jdarmawan@ipc.co.id
<b>Henry Sutanto</b>	Equity Sales	henry.sutanto@ipc.co.id
<b>Isna Alfiathi</b>	Equity Sales	isna.alfiathi@ipc.co.id
<b>Thomas Samuil</b>	Sales Trader	thomas.samuil@ipc.co.id

---

**INVESTMENT RATINGS**

Buy : Expected total return of 10% or more within a 12-month period  
Hold: Expected total return between -10% and 10% within a 12-month period  
Sell : Expected total return of -10% or worse within a 12-month period

**ANALYSTS CERTIFICATION.** The views expressed in this research report accurately reflect the analyst's personal views about any and all of the subject securities or issuers; and no part of the research analyst's compensation was, is, or will be, directly or indirectly, related to the specific recommendations or views expressed in the report.

**DISCLAIMER:** This research is based on information obtained from sources believed to be reliable, but we do not make any representation or warranty nor accept any responsibility or liability as to its accuracy, completeness or correctness. Opinions expressed are subject to change without notice. This document is prepared for general circulation. Any recommendation contained in this document does not have regard to the specific investment objectives, financial situation and the particular needs of any specific addressee. This document is not and should not be construed as an offer or a solicitation of an offer to purchase or subscribe or sell any securities. PT. Indo Premier Securities or its affiliates may be involved in transactions contrary to any opinion herein to make markets, or have positions in the securities recommended herein. PT. Indo Premier Securities or its affiliates may seek or will seek investment banking or other business relationships with the companies in this report.