

Technical Corner

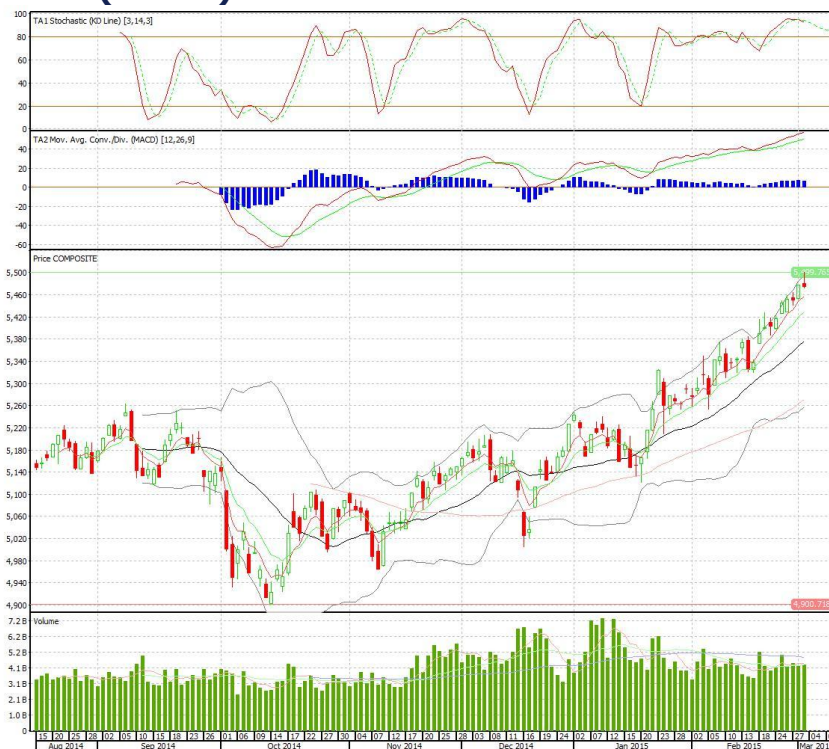
04 Maret 2015

IHSG

Range: 5.455 –5.500

---Indeks membentuk pola shooting star yang merupakan sinyal *bearish reversal*, stochastic *overbought* sedangkan MACD masih positif. Target koreksi indeks pada level 5.455 kemudian 5.425 dengan *resist* di 5.500 dan 5.515.

IHSG (5.475)



Surya Citra Media

Rekomendasi: Spec BUY

---Candle membentuk pola harami yang merupakan sinyal *bullish reversal*, stochastic berada pada area netral dan MACD masih positif. Target kenaikan harga pada level 3.630 kemudian 3.680 dengan *support* di 3.550, *cut loss* jika *break* 3.500.

SCMA (3.575)



Astra Agro Lestari

Rekomendasi: Spec BUY

---Setelah naik cukup tinggi, candle melemah guna konsolidasi. MACD positif sedangkan stochastic netral. *Support* 25.200, *target* harga 26.500. *Cut loss* jika *break* 24.500.

AALI (25.625)



BPD Jawa Barat

Rekomendasi: BUY

---Trend harga masih rally dan bullish di atas *support* EMA(5,10). MACD positif meskipun stochastic *overbought*. *Level support* 970. *Target* harga 1.030 kemudian 1.050, *cut loss* jika *break* 955.

BJBR (990)



Head Office**PT INDO PREMIER SECURITIES**

Wisma GKBI 7/F Suite 718

Jl. Jend. Sudirman No.28

Jakarta 10210 - Indonesia

p +62.21.5793.1168

f +62.21.5793.1167

ANALYSTS CERTIFICATION.

The views expressed in this research report accurately reflect the analyst's personal views about any and all of the subject securities or issuers; and no part of the research analyst's compensation was, is, or will be, directly or indirectly, related to the specific recommendations or views expressed in the report.

DISCLAIMERS

This research is based on information obtained from sources believed to be reliable, but we do not make any representation or warranty nor accept any responsibility or liability as to its accuracy, completeness or correctness. Opinions expressed are subject to change without notice. This document is prepared for general circulation. Any recommendations contained in this document do not have regard to the specific investment objectives, financial situation and the particular needs of any specific addressee. This document is not and should not be construed as an offer or a solicitation of an offer to purchase or subscribe or sell any securities. PT. Indo Premier Securities or its affiliates may seek or will seek investment banking or other business relationships with the companies in this report.