

## TECHNICAL CORNER

**Ikhsan Binarto**

ikhsan.binarto@ipc.co.id

**Muhammad Wafi**

wafi@ipc.co.id

**Daily Update**

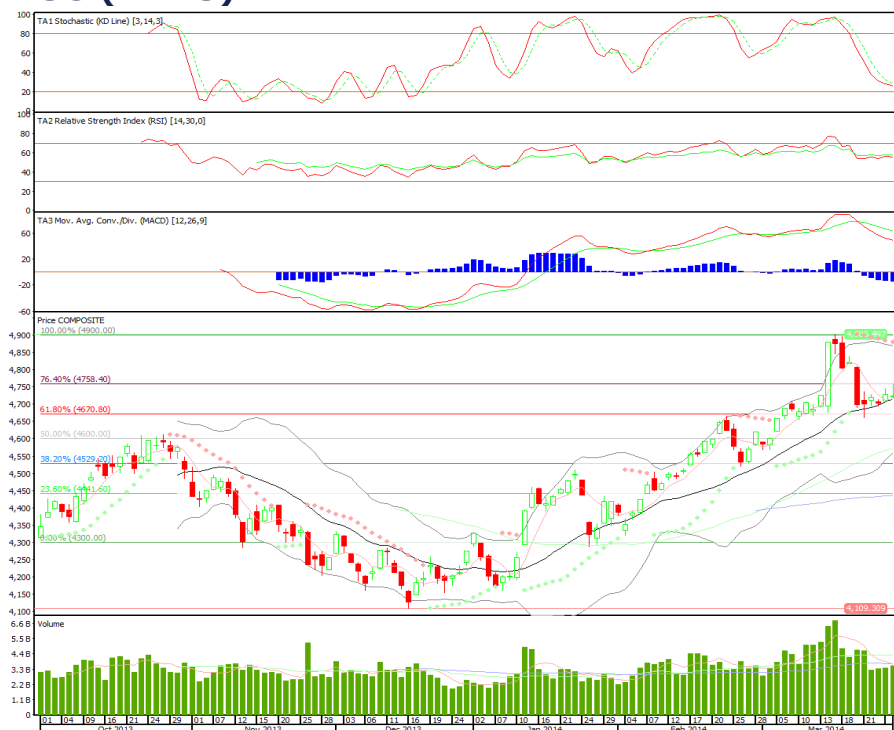
### IHSG

**Range: 4.660 – 4.775**

---Sempat mengalami kenaikan namun indeks ditutup turun dengan pola *inverted hammer* dan belum keluar dari fase *minor sideways*. Stochastic dan RSI *flat* sementara MACD negatif.

IHSG diperkirakan akan *mixed* cenderung melemah dengan *resist* di 4.775 sementara *support* 4.660.

### IHSG (4.723)



### Jasa Marga (Persero)

**Rekomendasi: BUY**

---Harga naik dengan *volume* dan melanjutkan fase *uptrend* setelah test *support* MA20. Stochastic dan MACD *goldencross* sementara RSI positif.

*Resist* di 6.025 kemudian 6.150. *Stoploss* jika *break & close* dibawah 5.800.

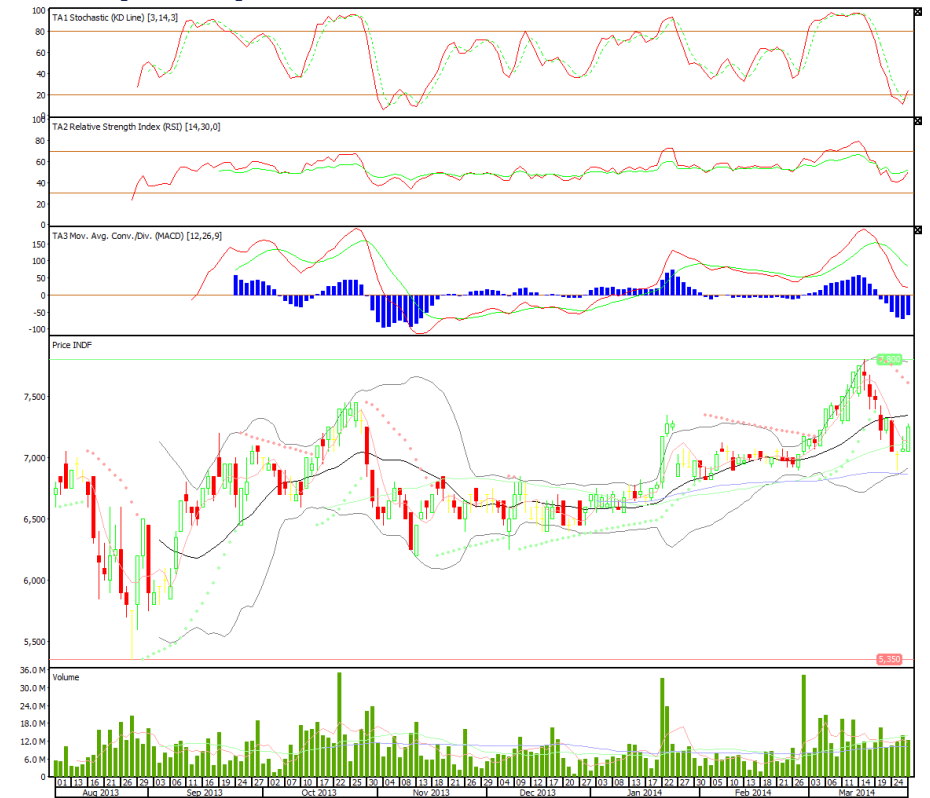
### JSMR (5.925)



## Indofood Sukses Makmur

**Rekomendasi: Sell On Strength**

---Harga *rebound* dan mencoba *test resist* MA20. Stochastic *goldencross* sementara RSI dan MACD *flat* Resist di 7.350 sementara *support* di 7.100. Bisa HOLD jika bertahan diatas 7.400 dengan *resist* berikutnya di 7.600.

**INDF (7.250)**

## Sri Rejeki Isman

**Rekomendasi: Sell On Strength**

---Harga *bounce back* setelah sebelumnya mengalami *overshoot* namun belum *break* fase *downtrend*. Stochastic positif sementara RSI *goldencross* dan MACD negatif.

Resist di 250 sementara *support* di 220. Bisa HOLD jika bertahan diatas 250 dengan *resist* berikutnya di 265.

**SRIL (233)**

**PT INDO PREMIER SECURITIES**

Wisma GKBI 7/F Suite 718

Jl. Jend. Sudirman No.28

Jakarta 10210 - Indonesia

p +62.21.5793.1168

f +62.21.5793.1167

---

**INVESTMENT RATINGS**

Buy : Expected total return of 10% or more within a 12-month period

Hold: Expected total return between -10% and 10% within a 12-month period

Sell : Expected total return of -10% or worse within a 12-month period

**ANALYSTS CERTIFICATION.** The views expressed in this research report accurately reflect the analyst's personal views about any and all of the subject securities or issuers; and no part of the research analyst's compensation was, is, or will be, directly or indirectly, related to the specific recommendations or views expressed in the report.

**DISCLAIMER:** This research is based on information obtained from sources believed to be reliable, but we do not make any representation or warranty nor accept any responsibility or liability as to its accuracy, completeness or correctness. Opinions expressed are subject to change without notice. This document is prepared for general circulation. Any recommendation contained in this document does not have regard to the specific investment objectives, financial situation and the particular needs of any specific addressee. This document is not and should not be construed as an offer or a solicitation of an offer to purchase or subscribe or sell any securities. PT. Indo Premier Securities or its affiliates may be involved in transactions contrary to any opinion herein to make markets, or have positions in the securities recommended herein. PT. Indo Premier Securities or its affiliates may seek or will seek investment banking or other business relationships with the companies in this report.