

Technical Corner

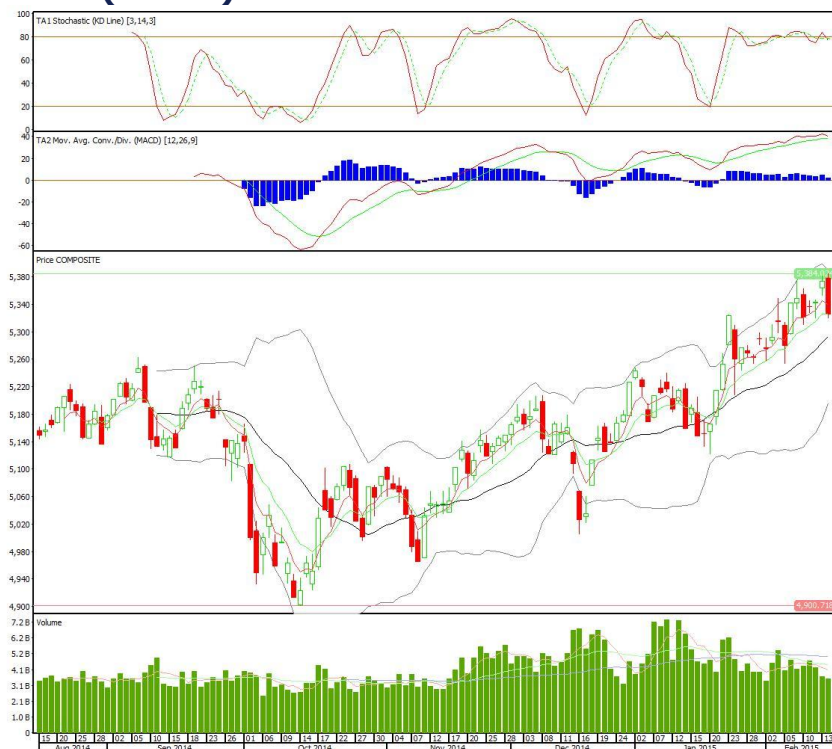
17 Februari 2015

IHSG

Range: 5.300 –5.350

---Indeks ditutup di bawah EMA5 dan membentuk pola black opening marubozu yang merupakan sinyal *bearish continuation*, stochastic memasuki area netral sedangkan MACD bearish cross-over. Target pelemahan indeks pada level 5.300 kemudian 5.280 dengan *resist* di 5.350 dan 5.380.

IHSG (5.325)



Media Nusantara Citra

Rekomendasi: Spec BUY

---Candle masih bertahan di atas EMA5 dan membentuk pola white opening marubozu yang merupakan sinyal *bullish continuation*, stochastic berada pada area overbought dan MACD positif. Target kenaikan harga pada level 3.115 kemudian 3.145 dengan *support* di 3.030, *cut loss* jika *break* 3.000.

MNCN (3.085)



Kalbe Farma

Rekomendasi: Buy On Weakness

---Dari *weekly chart*, candle *break support* EMA10 dengan volume yang tinggi. Stochastic *overbought*, sementara MACD positif. Kemungkinan masih akan melemah. *Strong support* di level 1.740 sekaligus level *entry point*. Resist terdekat 1.835. *Cut loss* jika *break* 1.670.

KLBF (1.800)



Jasa Marga

Rekomendasi: Spec BUY

---Candle sempat *break resist* EMA50 namun gagal hingga *closing*. Stochastic *oversold* sementara MACD mendekati *centre line*. Jika mampu *break* 7.000 maka sebaiknya beli dengan target harga 7.100 kemudian 7.250. *Support* terdekat 6.900, *Cut loss* jika *break* 6.775.

JSMR (6.975)



Head Office**PT INDO PREMIER SECURITIES**

Wisma GKBI 7/F Suite 718

Jl. Jend. Sudirman No.28

Jakarta 10210 - Indonesia

p +62.21.5793.1168

f +62.21.5793.1167

ANALYSTS CERTIFICATION.

The views expressed in this research report accurately reflect the analyst's personal views about any and all of the subject securities or issuers; and no part of the research analyst's compensation was, is, or will be, directly or indirectly, related to the specific recommendations or views expressed in the report.

DISCLAIMERS

This research is based on information obtained from sources believed to be reliable, but we do not make any representation or warranty nor accept any responsibility or liability as to its accuracy, completeness or correctness. Opinions expressed are subject to change without notice. This document is prepared for general circulation. Any recommendations contained in this document do not have regard to the specific investment objectives, financial situation and the particular needs of any specific addressee. This document is not and should not be construed as an offer or a solicitation of an offer to purchase or subscribe or sell any securities. PT. Indo Premier Securities or its affiliates may seek or will seek investment banking or other business relationships with the companies in this report.