

TECHNICAL CORNER

Ikhسان Binarto

ikhسان.binarto@ipc.co.id

Muhammad Wafi

wafi@ipc.co.id

Daily Update

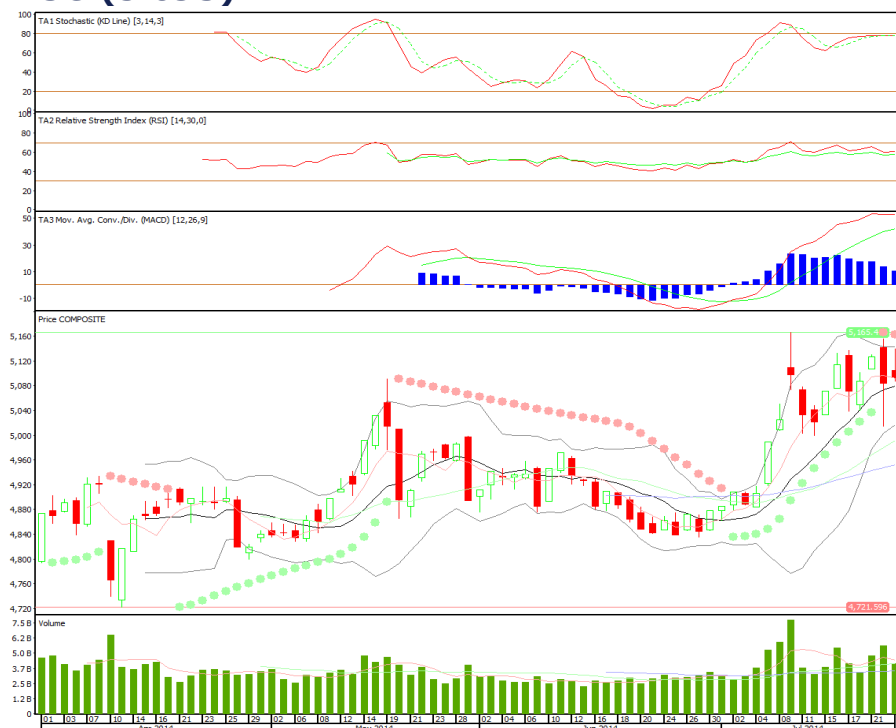
IHSG

Range: 5.050 – 5.145

---Day to day naik namun *intraday* turun dengan *uppershadow* dan terlihat mencoba *test* MA10. Stochastic dan RSI *flat* sementara MACD positif.

IHSG diperkirakan melemah dengan *support* di 5.050 sementara *resist* di 5.145.

IHSG (5.093)



KLBF (1.760)



Kalbe Farma

Rekomendasi: Buy On Weakness

---Harga masih bergerak pada *bullish channel* namun kenaikan harga tidak didukung *volume* meski stochastic dan RSI *goldencross* sementara MACD masih positif.

Support dan *entry level* mulai dari 1.740-1.710 sementara *resist* di 1.800. *Stoploss* jika *break & close* dibawah 1.700.

Astra Agro Lestari

Rekomendasi: Spec BUY

---Volume masih tipis sementara stochastic *oversold*. MACD juga negatif sehingga belum ada sinyal *reversal* yang kuat.

Target harga 26.650 kemudian 27.000, *cut loss* jika *break & closed* di bawah 25.500.

AALI (26.000)

London Sumatera Plantation

Rekomendasi: Spec BUY

---Volume masih tipis sementara stochastic *oversold*. MACD juga negatif sehingga belum ada sinyal *reversal* yang kuat.

Target harga 2.100 kemudian 2.160, *cut loss* jika *break & closed* di bawah 1.960.

LSIP (2.010)

PT INDO PREMIER SECURITIES

Wisma GKBI 7/F Suite 718

Jl. Jend. Sudirman No.28

Jakarta 10210 - Indonesia

p +62.21.5793.1168

f +62.21.5793.1167

INVESTMENT RATINGS

Buy : Expected total return of 10% or more within a 12-month period

Hold: Expected total return between -10% and 10% within a 12-month period

Sell : Expected total return of -10% or worse within a 12-month period

ANALYSTS CERTIFICATION. The views expressed in this research report accurately reflect the analyst's personal views about any and all of the subject securities or issuers; and no part of the research analyst's compensation was, is, or will be, directly or indirectly, related to the specific recommendations or views expressed in the report.

DISCLAIMER: This research is based on information obtained from sources believed to be reliable, but we do not make any representation or warranty nor accept any responsibility or liability as to its accuracy, completeness or correctness. Opinions expressed are subject to change without notice. This document is prepared for general circulation. Any recommendation contained in this document does not have regard to the specific investment objectives, financial situation and the particular needs of any specific addressee. This document is not and should not be construed as an offer or a solicitation of an offer to purchase or subscribe or sell any securities. PT. Indo Premier Securities or its affiliates may be involved in transactions contrary to any opinion herein to make markets, or have positions in the securities recommended herein. PT. Indo Premier Securities or its affiliates may seek or will seek investment banking or other business relationships with the companies in this report.