

Technical Corner

20 Februari 2015

IHSG

Range: 5.370 –5.415

---Indeks dengan dukungan volume yang cukup tinggi di atas VMA5 membentuk pola white opening marubozu yang merupakan *sinyal bullish continuation*, stochastic berada di area netral dan MACD masih positif. Target kenaikan indeks pada level 5.415 kemudian 5.435 dengan *support* di 5.370 dan 5.350.

IHSG (5.390)



Bekasi Fajar Industrial Estate

Rekomendasi: Spec BUY

---Candle berhasil ditutup di atas EMA5 dan membentuk pola white opening marubozu yang merupakan *sinyal bullish continuation*, stochastic meninggalkan area *oversold* sedangkan MACD masih negatif. Target kenaikan harga pada level 690 kemudian 700, dengan *support* di 670, *cut loss* jika *break* 655.

BEST (680)



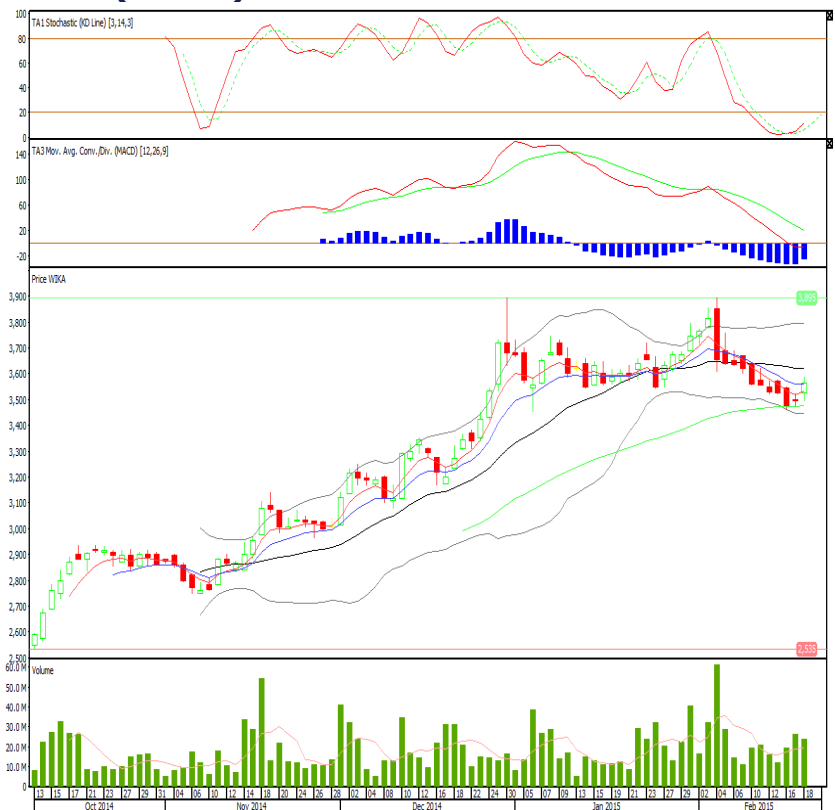
Wijaya Karya

Rekomendasi: BUY

---Harga *rebound* dari *support* EMA50 dengan volume di atas VMA5. Candle juga *break resist* EMA5 sehingga stochastic berpeluang keluar dari *oversold*.

Target harga 3.670 kemudian 3.800. *Support* 3.520, *cut loss* jika *break* 3.450.

WIKA (3.565)



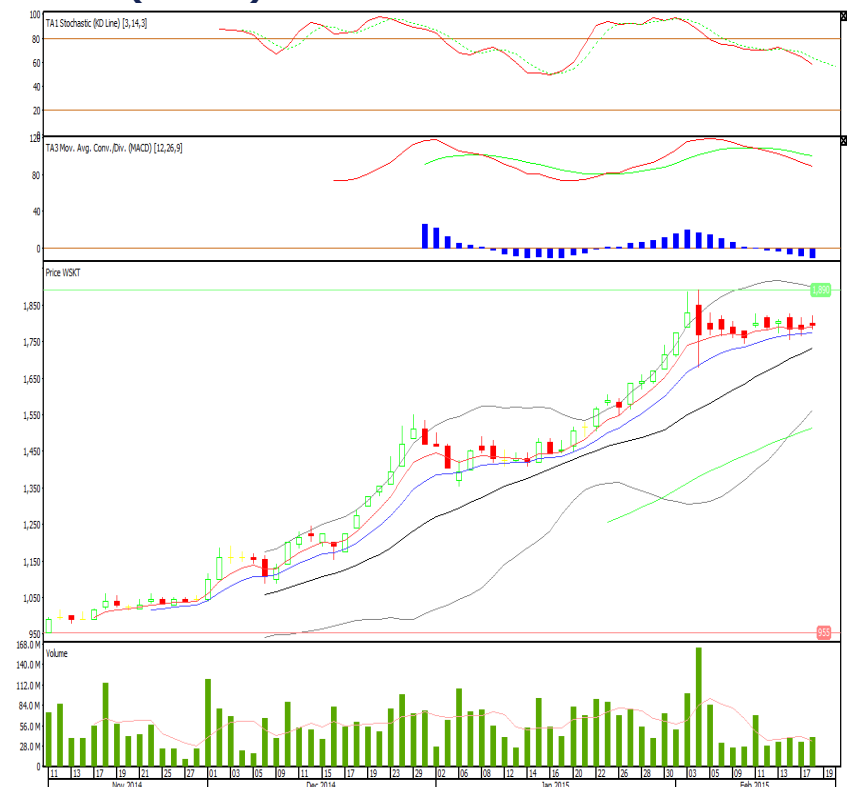
Waskita Karya

Rekomendasi: BUY

---Candle masih *strong bullish* bertahan di atas *support* EMA(5,10). Stochastic netral sementara MACD positif.

Target harga 1.890 kemudian 1.920, *support* 1.785, *cut loss* jika *break* 1.730

WSKT (1.795)



Head Office**PT INDO PREMIER SECURITIES**

Wisma GKBI 7/F Suite 718

Jl. Jend. Sudirman No.28

Jakarta 10210 - Indonesia

p +62.21.5793.1168

f +62.21.5793.1167

ANALYSTS CERTIFICATION.

The views expressed in this research report accurately reflect the analyst's personal views about any and all of the subject securities or issuers; and no part of the research analyst's compensation was, is, or will be, directly or indirectly, related to the specific recommendations or views expressed in the report.

DISCLAIMERS

This research is based on information obtained from sources believed to be reliable, but we do not make any representation or warranty nor accept any responsibility or liability as to its accuracy, completeness or correctness. Opinions expressed are subject to change without notice. This document is prepared for general circulation. Any recommendations contained in this document do not have regard to the specific investment objectives, financial situation and the particular needs of any specific addressee. This document is not and should not be construed as an offer or a solicitation of an offer to purchase or subscribe or sell any securities. PT. Indo Premier Securities or its affiliates may seek or will seek investment banking or other business relationships with the companies in this report.