

# Technical Corner

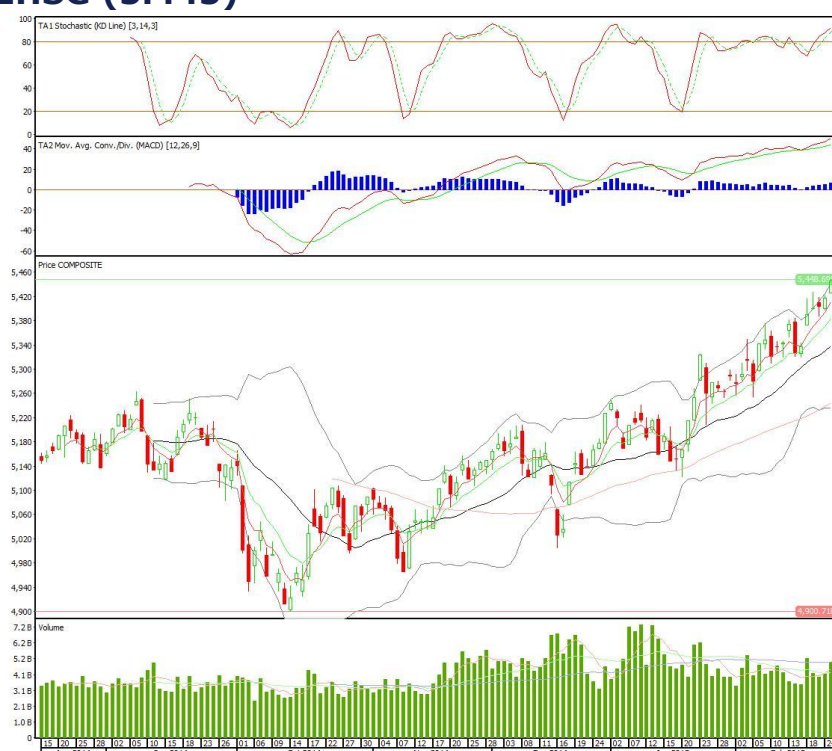
26 Februari 2015

## IHSG

**Range: 5.425 –5.465**

---Indeks dengan dukungan volume di atas VMA5 membentuk pola white opening marubozu yang merupakan sinyal *bullish continuation*, stochastic berada di area *overbought* sedangkan MACD masih positif. Target kenaikan indeks pada level 5.465 kemudian 5.475 dengan *support* di 5.425 dan 5.400.

## IHSG (5.445)



## Jasa Marga

**Rekomendasi: Spec BUY**

---Candle membentuk pola white opening marubozu yang merupakan sinyal *bullish continuation*, stochastic berada pada area netral sedangkan MACD masih positif. Target kenaikan harga pada level 7.125 kemudian 7.175 dengan *support* di 7.025, *cut loss* jika *break* 6.975.

## JSMR (7.075)



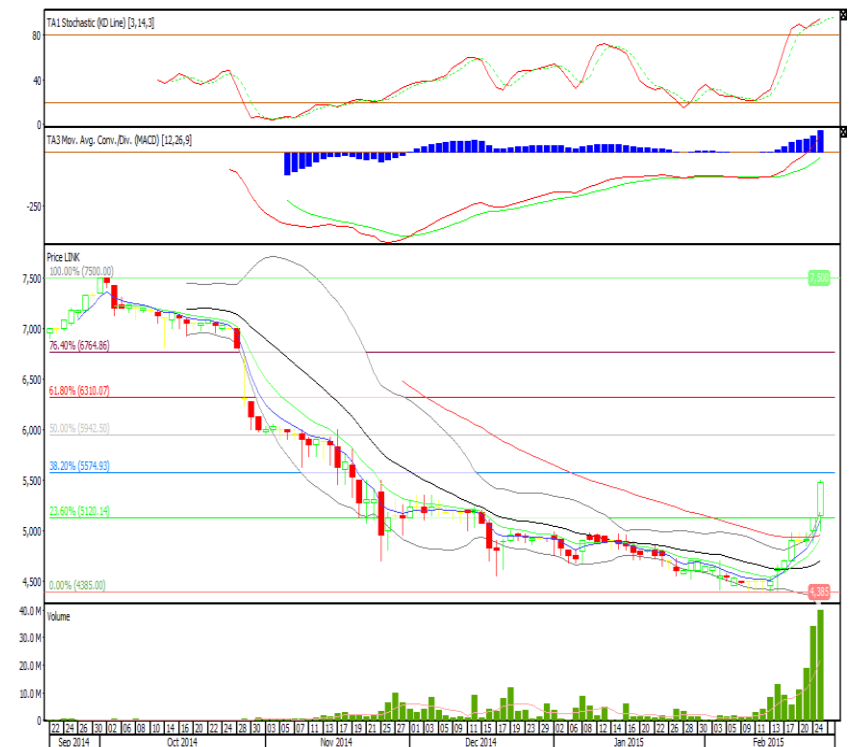
## Link Net

### Rekomendasi: BUY

---Candle masih bergerak naik di atas *support* EMA5 dengan volume yang tinggi. MACD positif sementara stochastic *overbought*.

Target harga 5.575 kemudian 5.950, *support* 5.125. *Cut loss* jika *break* 4.900.

## LINK (5.475)



## Bank Central Asia

### Rekomendasi: BUY

---Daily chart, trend harga masih *bullish* di atas *support* EMA10. MACD positif sedangkan stochastic netral. Level *support* 11.775. Target harga 14.550, *cut loss* jika *break* 13.700.

## BBCA (14.100)



**Head Office****PT INDO PREMIER SECURITIES**

Wisma GKBI 7/F Suite 718

Jl. Jend. Sudirman No.28

Jakarta 10210 - Indonesia

p +62.21.5793.1168

f +62.21.5793.1167

**ANALYSTS CERTIFICATION.**

The views expressed in this research report accurately reflect the analyst's personal views about any and all of the subject securities or issuers; and no part of the research analyst's compensation was, is, or will be, directly or indirectly, related to the specific recommendations or views expressed in the report.

**DISCLAIMERS**

This research is based on information obtained from sources believed to be reliable, but we do not make any representation or warranty nor accept any responsibility or liability as to its accuracy, completeness or correctness. Opinions expressed are subject to change without notice. This document is prepared for general circulation. Any recommendations contained in this document do not have regard to the specific investment objectives, financial situation and the particular needs of any specific addressee. This document is not and should not be construed as an offer or a solicitation of an offer to purchase or subscribe or sell any securities. PT. Indo Premier Securities or its affiliates may seek or will seek investment banking or other business relationships with the companies in this report.