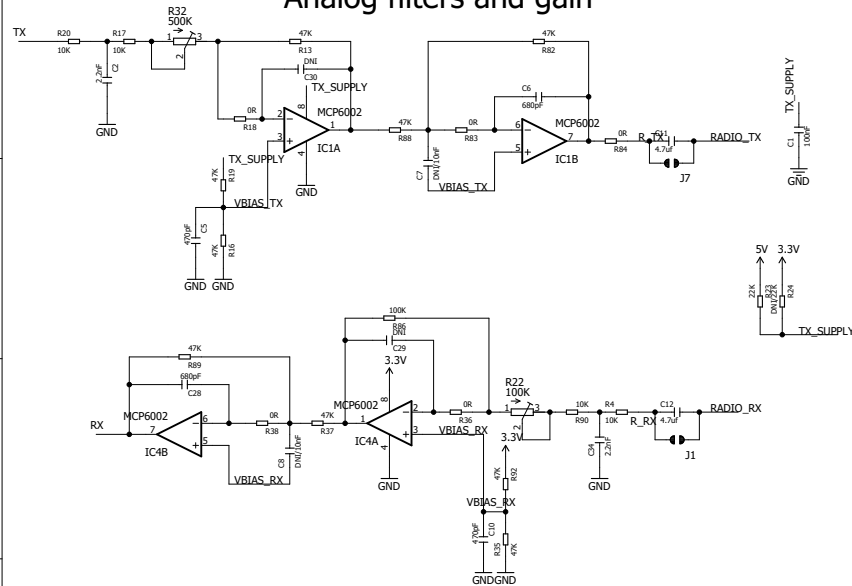
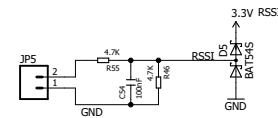


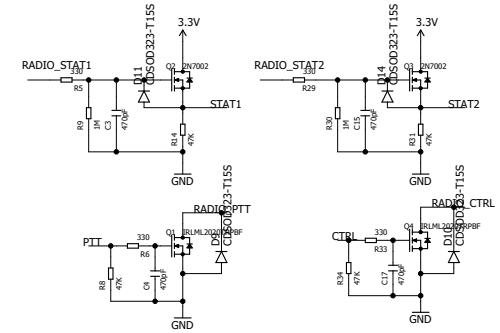
## Analog filters and gain



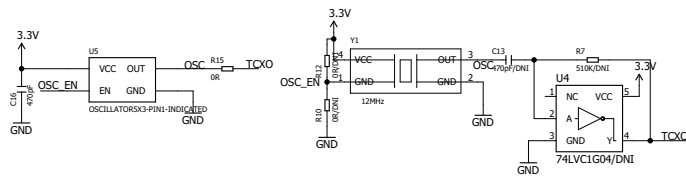
## RSSI connector



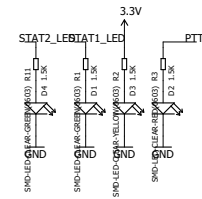
## Radio control and status



## Low ppm crystal/oscillator

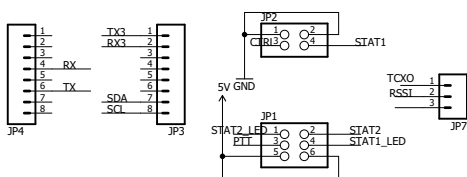


## Status LEDs

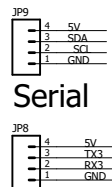


Radio RX	Due RX
Radio TX	Due TX
Radio PTT	Due PTT
Radio CTRL	Due CTRL
Radio STAT1	Due STAT1
Radio STAT2	Due STAT2
	Due RSSI

## Connectors to Due

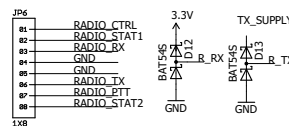


## I2C

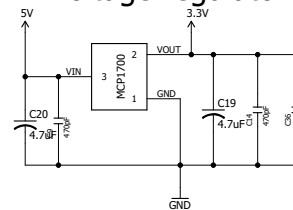


## Serial

## Radio connection



## Voltage regulator



ZUM Radio - MMDVM for Due  
(c) 2016 - KI6ZUM CC-BY-NC-SA

TITLE: MMDVM\_smd\_1.0.1

Document Number:



REV:  
1.0.1

Date: 11/8/2016 10:30 PM

Sheet: 1/1