

Panasonic
ideas for life

Iris Recognition Camera System
BM-ET300A Series



Up to 5,000 Users

High Precision

Quick Recognition

Flexible Interface

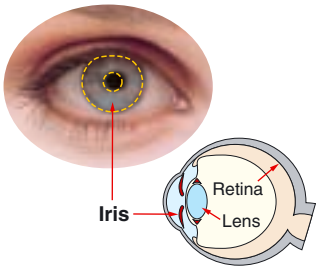


Simple, speedy iris recognition. Now with voice guidance. The new BM-ET300A Series.

Panasonic's full line-up of Iris recognition products now includes the BM-ET300A Series. The BM-ET300A combines high precision, faster iris recognition, and flexible system architecture for state-of-the-art personal identification.

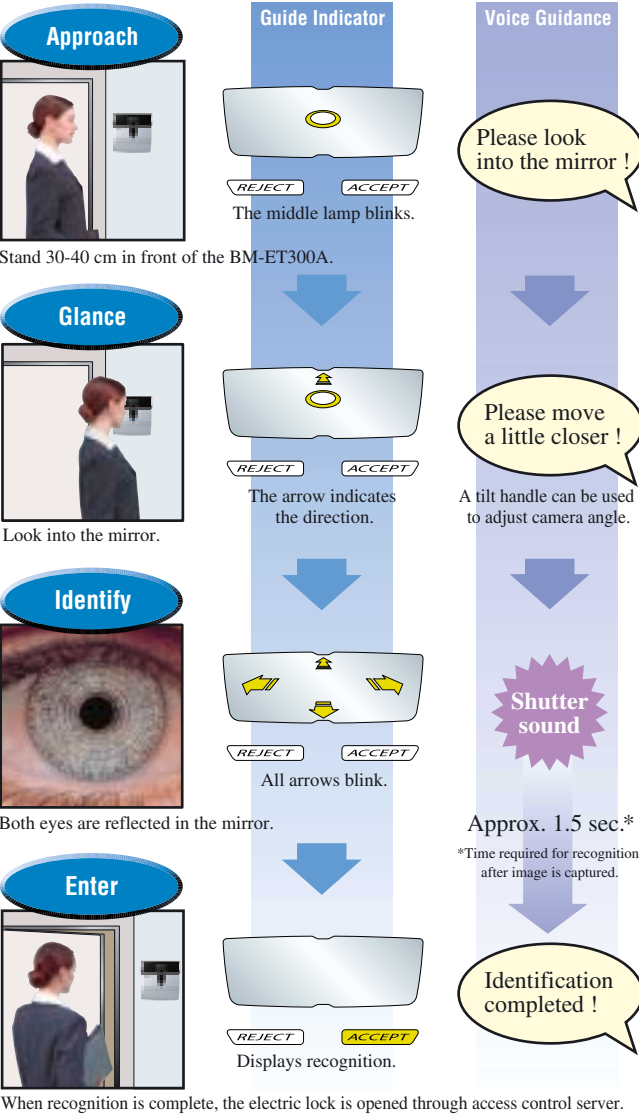
High security, with false acceptance ratio as 1 in 1.2 million*

Iris recognition uses individual differences in the complex patterns found in the iris of the human eye to authenticate individual identities. Iris recognition is the most precise of all biometric identification systems. The false acceptance ratio is so low that the probability of falsely identifying one individual as another is virtually zero.



- Iris Characteristics**
- An extremely complex pattern that differs even between identical twins.
 - Patterns stabilize between six months and two years of age and then remain unchanged for life.
 - They are extremely difficult to imitate.
- **"RECOGNIZING PERSONS BY THEIR IRIS PATTERNS" by John Daugman, University of Cambridge.

Guide Indicator and Voice Guidance Make Recognition Simple and Speedy



There is normally no need to remove eyeglasses or contact lenses while being recognized. (Recognition may not be possible with some types of glasses, sunglasses, or contact lenses or in certain environments.)

For iris recognition, two cameras simultaneously capture the images from both eyes.

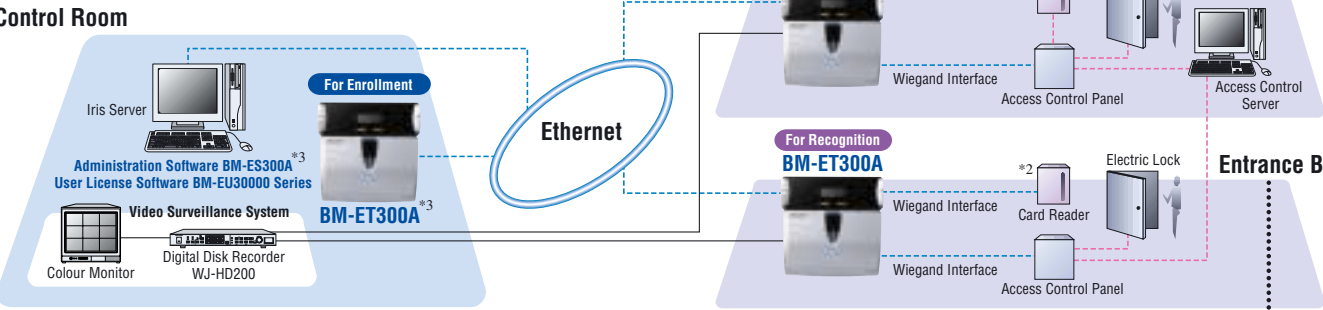
Recognition results are displayed.

Tilt handle simplifies adjusting camera angle
This tilt handle makes it easy to optimize camera angle when capturing iris images.



Can be connected to existing security system

BM-ET300A Series I/O is compatible with the standard Wiegand interface protocol for access control server, allowing the iris recognition to be integrated with existing access control panel and card reader systems.



*1 Principal authentication using an iris camera may not work on all individuals. However, when iris recognition does not work, the answer is to connect a card reader to the door control box, which enables recognition with an iris camera or a card.
*2 A card reader can also be connected directly to the iris camera. In this case, overall system security can be further enhanced, since the final recognition result will be carried out following the redundant recognitions with a card and iris.
*3 Iris Camera BM-ET300A requires Administration Software BM-ES300A. BM-ET300A Series and BM-ET300 Series cannot be combined in the same system.

APPLICATIONS

Offices Data Centre, Material storage, safes, executive offices, secure meeting rooms	Laboratories and factories Drug or dangerous materials storage rooms, night or holiday entry control	Financial institutions Safes, safety deposit box rooms
Lifeline facilities Power generator rooms, dam management offices, gas company control rooms	Traffic control centres Expressway administration centres, railroad dispatcher rooms	Airport and harbor facilities Staff gates, Immigration, workshops
• Police • Prisons • Courts • Any and all security applications		

12-language voice guidance

Use the menu on the iris server to select English, French, German, Italian, Spanish, Portuguese, Russian, Chinese, Swedish, Arabic, Turkish, or Dutch. A single iris server allows use of any language by different BM-ET300A terminals.

Select any of three audio modes

Audio Mode	Guide	Shutter Sound	Identification Result
Full	○	○	○
Simple	—	○	○
Mute	—	—	—

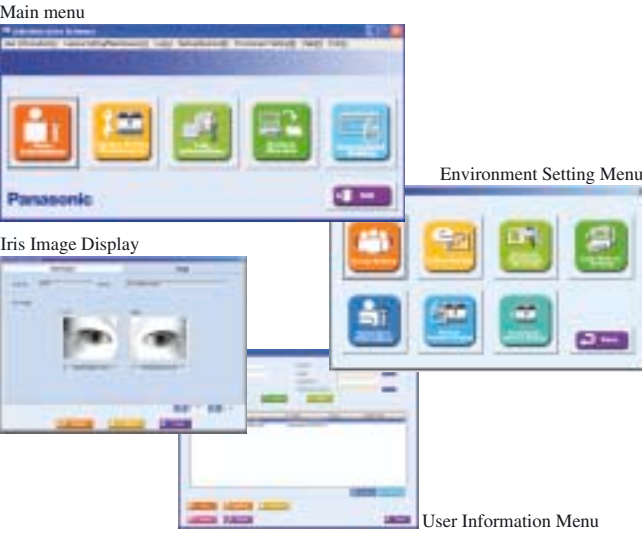
For systems large and small

Flexible registration software supports incremental users. User License Software; BM-EU30000 Series comes in four key sizes: for 100 users, 1,000 users, 3,000 users, or max. 5,000 users. Contact Panasonic for systems that require more than 5,000 registrants.

Easy operation and management from a iris server

All settings, registrations, updates, and information confirmation can be controlled from a PC display.

Display Examples



Designed for High Security

Encrypted registration data

Encrypting of Iris code/image data prevents unauthorized access.

Tamperproof construction

An alarm sounds if the camera is removed from the wall or the front cover is opened.

Alarm notification

System operators can be automatically warned when alarms indicate that cameras have been replaced or damaged, etc.

PRODUCT CONFIGURATION

Iris Camera BM-ET300A

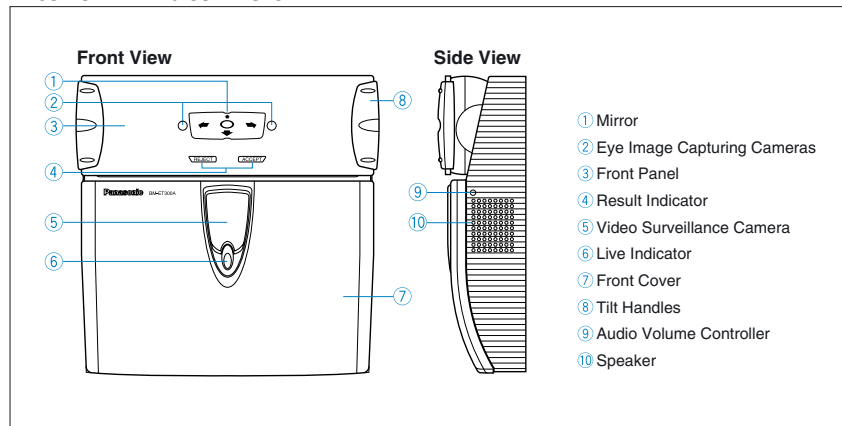


Administration Software BM-ES300A

User License Software
BM-EU30100 (for 100 Users)
BM-EU31000 (for 1,000 Users)
BM-EU33000 (for 3,000 Users)
BM-EU35000 (for 5,000 Users)

* Iris Camera BM-ET300A requires Administration Software BM-ES300A. BM-ET300A Series and BM-ET300 Series cannot be combined in the same system.

MAJOR OPERATING CONTROLS



BM-ET300A SPECIFICATIONS [PAL]

General	
User Registrations	Max. 10,000 eyes (5,000 users) / System Max. 2,000 eyes (1,000 users) / one BM-ET300A
Power Source	12V DC or 24V AC
Power Consumption	12W
Ambient Operating Temperature	0°C - +40°C
Ambient Operating Humidity	30% - 80%
Iris Recognition Time	approx. 1.5 seconds (after image capturing)
Dimensions	212 (W) x 216 (H) x 55 (D) mm
Weight (approx.)	2.4kg (with the mounting bracket)
Door Control Interface	Wiegand interface
Card Reader Interface	Wiegand interface
Ethernet Port	TCP/IP (10Base-T / 100Base-TX)
Input / Output	
Wiegand Output	1 terminal (access control panel), 0/5V 24mA (Max.)
Wiegand Input	1 terminal (card reader), 0/5V 24mA (Max.)
Alarm Output	4 terminals (recognition Accept / Reject, power status, tamper detection)
Ethernet Port	1 terminal
Video Surveillance Camera	PAL composite video signal (1V[p-p]/75 Ω) x 1
* The third-party external power-supply device should meet the following standard,	
Output Voltage	12V DC ±0.5V 24V AC ±0.5V
Output Current Capacity	DC : 0 - 1.5A, AC : 0 - 1.5A
Rated Ripple Voltage/Ripple Noise	150mV [p-p] or less
Over Current Protection	Enabled (mandatory)

- Authenticam, Private ID, and KnoWho are trademarks of Iridian Technologies, Inc., USA.
- Windows® 2000 Professional, or Windows® XP Professional are registered trademarks of Microsoft Corporation in the USA and / or other countries.
- All other trademarks are the property of their respective copyright holders.

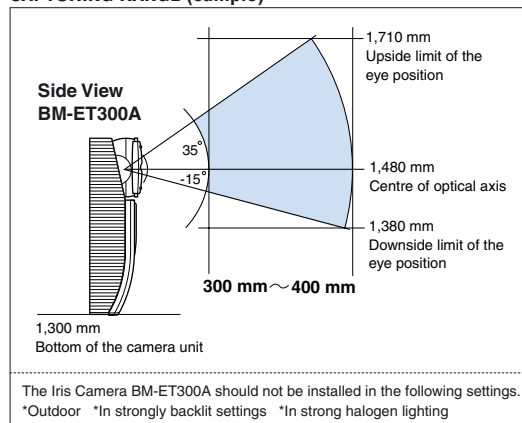


Important – Safety Precaution: carefully read the operating instructions and installation manual before using this product.

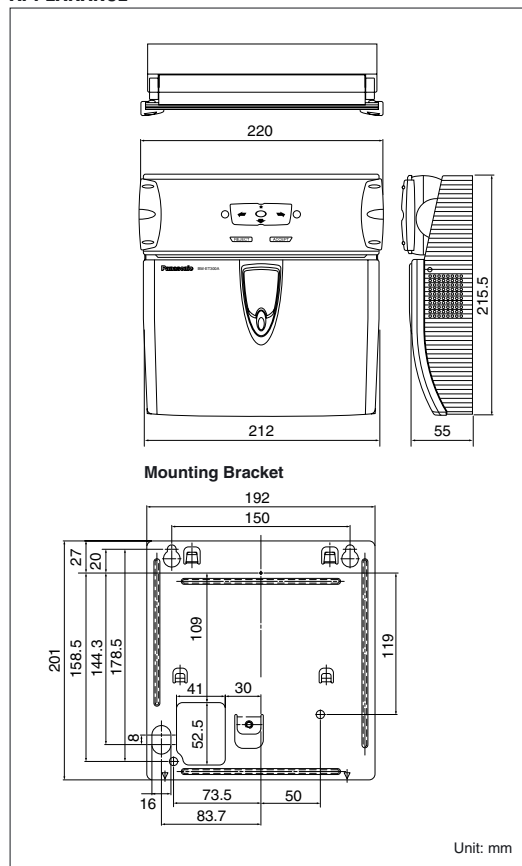
- All photographs and menu are simulated and shown for the purpose of explanation.
- Weights and dimensions are approximate. • Specifications are subject to change without notice. • This product is subject to export control regulations.

DISTRIBUTED BY:

CAPTURING RANGE (sample)



APPEARANCE



**Panasonic System Solutions Company
Matsushita Electric Industrial Co., Ltd.**
 4-3-1, Tsunashima-higashi, Kohoku-ku, Yokohama,
 223-8639, Japan
 Tel 81(0)45-540-5769
 Fax 81(0)45-540-5773
 URL <http://panasonic.co.jp/pss/cctv/en/index.html>

Panasonic

Panasonic is the brandname of Matsushita Electric.
 Printed in Japan BM-JKET300AC(2N-707C)