

ECS/WIS PTO NEWS

Edna C. Stevens School and Woodside Intermediate School Parent Teacher Organization

March/April 2012

President: Michele Budzik ~ Treasurer: Jennifer Corcoran ~ Secretary: Michele Asaro



BOX TOPS!!!

Thank you!

Keep collecting!
We will submit again
in the fall.

If you are interested in
taking over the Box
Tops position for next
fall, please contact
Tara Stermer at
Tarastermer
@comcast.net



**Daylight Savings
Time begins on
Sunday, March
11. Be sure to
change your
clocks!**



PTO Meeting Wednesday March 14th 7:00 p.m.

Guest Speakers: Mrs. Melody Wnuk and Mrs. Julie Carroll
discussing the "CAFE" strategies for reading

The ECS/WIS PTO will be accepting nominations for the Executive Board at our March 14th meeting. If you, or someone you know, is interested in a position on the Board, please plan to attend the March meeting. Nominations must be made at the March meeting to be on the ballot for voting at the May meeting. Bring someone to nominate you! The Executive Board consists of President, Treasurer and Secretary. All Positions are open for the 2012-2013 School Year.



Pancake Breakfast

TO SUPPORT ECS/WIS PTO

Come in & Join us

Date & Time: Saturday March 31, 2012

8:00AM – 11:00AM

Location: Woodside Intermediate School Cafe

Price: \$5.00 (Children under 3 free)

Tickets available at the door

Questions?, Contact Linda Brodeur snlbro@sbcglobal.net or
Andrea Menard abmenard@comcast.net

New Web Site Coming Soon...

In the fall of 2012 we will have our very own website:

www.ecswispto.org

Stay tuned for more details...

ECS/WIS School Fair

Please help our PTO with this fundraiser!

Join us for a brief informational meeting following the monthly PTO meeting on Wednesday, March 14th. If you can't make it, but would still like to help- feel free to email us. We'd LOVE to hear from you.

Thank you for your support!

Shannon and Angela Greer
shannonandangela@gmail.com

It's Budget Time!



Did you know that the Board of Education has been planning the budget for the 2012-2013 school year? Please visit the district or school websites at www.cromwell.k12.ct.us for all updated information.



SPRING begins on March 20th!

At the start of spring—the spring equinox—day and night are approximately 12 hours long and the Sun is at the midpoint of the sky.

Our north pole tilts towards the Sun.



SAVE THESE DATES !!

March 30th - Spring Fundraiser Pickup

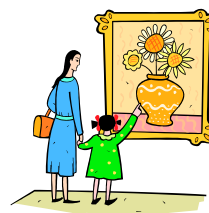
March 31st - Pancake Breakfast

April 12th - Chili's Night

May 4th - Family Day at the Rock Cats

May 11th - Art Extravaganza

June 7th - School Fair



SCHOOL SPIRIT DAYS

Show your ECS or WIS spirit!

Friday, March 16, 2012 – Club/Organization Day – Wear something to represent a club or organization you belong to!

Friday, March 30, 2012 - ECS/WIS Logo Wear R.A.F.T. Logo Wear Day -- Wear either your ECS/WIS Logo Wear or R.A.F.T. Logo Wear!

Friday, April 13, 2012 - Pajama Day - Wear your favorite PJ's!

Friday, April 27, 2012 - ECS/WIS Logo Wear/R.A.F.T. Logo Wear Day -- Wear either your ECS/WIS Logo Wear or R.A.F.T. Logo Wear!

THANK YOU!

To Marilyn Papert & Carrie Cantone for chairing our Spring Fundraiser. Remember your orders must be picked up on Friday, March 30th at ECS in the GYM.

ECS/WIS PTO DONATIONS

The ECS/WIS PTO accepts monetary donations from our school community and extended friends and/or family members, in addition to or in place of participating in other fundraising efforts. While our Fall and Spring catalog fundraisers are extremely successful for our PTO and we receive a generous 50% of the profits from Genevieve's, we often hear that families or grandparents would prefer to give 100% of their money to the PTO and not make a product purchase. You can! If you or someone you know would like to make a donation to our PTO directly, please use the form below. On behalf of our school community, we thank you for your generosity!

NAME _____ PHONE _____

EMAIL _____

Donation amount: () \$10 () \$20 () \$50 () Other: \$ _____

Please make checks payable to ECS/WIS PTO, 25 Court Street, Cromwell, CT 06416