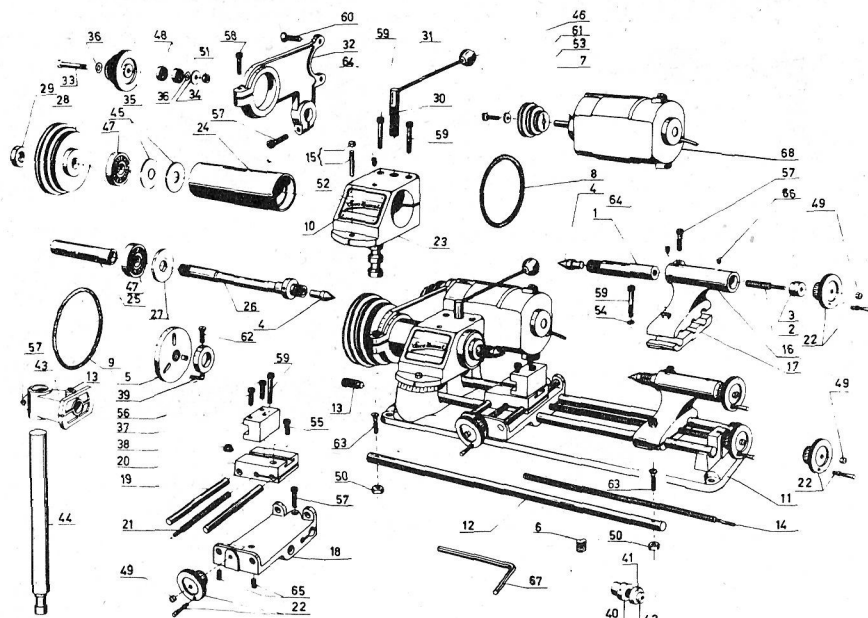
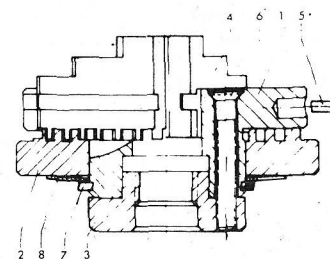


UNIMAT DB 200 AND UNIMAT SL 1000 SPARE PARTS LIST



UNIVERSAL 3-JAW CHUCK #100.100



POS	NUMBER	DESCRIPTION	PRICE
1	NOT AVAIL.	body	-----
2	A2Z410020	scroll	\$33.70
3	A2Z410300	flange	\$14.70
4	ZME400003	jaws (3)	\$25.15
5	A2Z410050	dowel pin	\$ 3.35
6	ZSR630425	screw	.40
7	ZRG713015	snap ring	.75
8	ZFD944653	disc spring	.75

UNIMAT SL MANUAL
with instructions and all spare parts
#992.020 \$7.00

MOTOR BRUSHES

Replacement brushes for the Unimat SL motors as follows:

TYPE	BRUSH NUMBER	PRICE EACH
U-90	ZME900001	6.90
U-100	ZME100001	6.40
UG7750	ZME848001	\$8.15

Motor type found on nameplate.
Two brushes required per motor.
Complete new motor
ZME847116 \$169.00

COLLET HOLDER

Backing plate for collet holder (102.000)
#A2Z290030 \$13.40

SOFT JAWS

Set of 3 soft jaws for chuck #100.100
#100.300 \$27.00

STEADY REST

Replacement guide pins for fixed steady rest
#A2Z240020 \$1.60

UNIMAT TAP, DRILL & DIE

12 x 1 Plug Tap	#121PT	\$ 9.75
12 x 1 1-1/2" Die	#121D	\$14.95
10.20 mm Drill	#1020	\$6.95
Set (1 each)	#12TDD	\$27.95

SPARE PARTS FOR OTHER ACCESSORIES ARE AVAILABLE

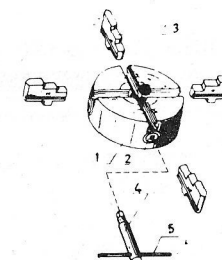
POS	NUMBER	DESCRIPTION	PRICE
1	A2A000010	tailstock ram	\$34.00
2	A2A000020	lead screw	5.40
3	A2A000030	guide pin	6.20
4	A2A000040	center	2.90
5	A2A000051	faceplate	20.50
6	A2A000060	nut-screw	1.90
7	A2A000070	pulley	11.50
8	130.090	belt	2.75
9	130.091	belt	2.75
10	A2A000110	name plate	1.60
11	A2A010010	bed*	78.00
12	A2A010020	guide column	7.50
13	A2A010030	tension screw*	4.60
14	A2A010040	threaded spindle	10.70
15	A2A010050	marker pin	2.70
16	ZME404000	tailstock	54.40
17	A2A010070	clamping plate	12.90
18	A2A020010	support	41.50
19	A2A020020	guide column	2.10
20	A2A020030	carriage	32.00
21	A2A020040	threaded spindle	4.80
22	A2A020050	hand wheel	8.50
23	A2A300000	headstock*	31.80

POS	NUMBER	DESCRIPTION	PRICE
24	A2A040010	spindle sleeve	24.50
25	A2A040020	distance bush	6.20
26	A2A040030	main spindle	31.50
27	A2A040040	spindle wheel	2.70
28	A2A040050	spindle pulley	21.50
29	A2A040060	nut	4.45
30	A2A050010	pinion	14.20
31	A2A050020	locking handle	2.70
32	A2A060010	motor bracket	24.50
33	A2A060020	bearing bolts	4.80
34	A2A060030	cover disc	1.90
35	A2A060040	idler pulley	8.30
36	A2A060050	washer	.35
37	A2A070010	toolholder	10.70
38	A2A070020	t-nut	2.20
39	A2A080000	lathe dog	7.00
40	A2A090010	gr. wheel adaptor	7.50
41	A2A090020	retaining ring	4.80
42	A2A090030	screw	6.30
43	A2A100010	headstock adaptor*	43.00
44	A2A100020	vertical column*	19.80
45	ZFD942971	disc spring	.70
46	ZGF192005	plastic ball	.70

POS	NUMBER	DESCRIPTION	PRICE
47	ZLG001300	ball bearing	8.25
48	ZLG062600	ball bearing	4.80
49	ZMU170500	domed nut	.75
50	ZMU340500	nut	.40
51	ZMU340600	nut	.40
52	ZNA760144	rivet	.40
53	ZSB250430	washer	.40
54	ZSB250640	washer	.40
55	ZSR120612	socket cap screw	.75
56	ZSR120616	socket cap screw	.75
57	ZSR120620	socket cap screw	.75
58	ZSR120625	socket cap screw	.75
59	ZSR120630	socket cap screw	.75
60	ZSR630515	countersunk screw	.40
61	ZSR840408	cheese head screw	.40
62	ZSR840525	cheese head screw	.40
63	ZSR910525	flat head screw	.40
64	ZST170608	dog pt. grub screw	.75
65	ZST530410	cone pt. grub screw	.40
66	ZST530606	cone pt. grub screw	.75
67	ZWZ110500	allen key	1.50
68	ZME847116	motor	\$169.00

*Not available for DB200

INDEPENDENT 4-JAW CHUCK #100.200



POS	NUMBER	DESCRIPTION	PRICE
1	NOT AVAIL.	body	-----
2	A2Z420020	adjusting screw	\$ 8.15
3	ZME400004	jaws 1 set of 4	\$33.85
4	A2Z420040	key	\$11.10
5	ZST750460	key handle	.75

ACCESSORIES FOR DB 200 AND UNIMAT SL 1000

LATHE NO LONGER IN PRODUCTION (Old Order Numbers In Brackets)

DRIVE BELTS FOR UNIMAT SL

Small drive belt. (1.75" X 0.18") (51)
#130.090 \$2.75
Large drive belt. (2.75" X 0.20") (52)
#130.091 \$2.75
Automatic feed. (1.75" X 0.20")
#130.095 \$2.75



THREE JAW LATHE CHUCK #100.100 (1001) \$65.00

SOFT JAWS

Set of three for three jaw lathe chuck
#100.100.
#100.300 \$24.00

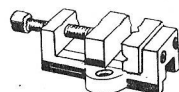


FOUR JAW LATHE CHUCK #100.200 (1002) \$77.50



THREE JAW DRILL CHUCK Capacity .315". #100.500 (1005) \$22.00

QUILL RETURN SPRING For vertical head. #100.800 \$8.00



MACHINE VISE #101.000 \$47.50

COLLET HOLDER

For collets #152.210-#152.280. ES-16.
#102.000 (1020) \$53.50



10 PIECE COLLET SET 1-9mm (1/32" X 9/32") ES-16 in box. #152.200 \$357.50

RUBBER DISC WITH ARBOR For flexible shaft 125,000. #116.500 (1261/3) \$12.00

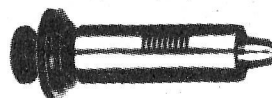
POLISHING ARBOR #103.000 (1030) \$24.00

SINGLE COLLETS TYPE ES-16

#152.210 0.5-1.0mm (1/32")
#152.215 1.0-1.5mm (3/64")
#152.220 1.5-2.0mm (5/64")
#152.225 2.0-2.5mm (3/32")
#152.230 2.5-3.0mm (7/64")
#152.240 3.0-4.0mm (5/32-1/8")
#152.250 4.0-5.0mm (3/16-11/64")
#152.260 5.0-6.0mm (15/64-7/32")
#152.270 6.0-7.0mm (17/64-1/4")
#152.280 7.0-8.0mm (5/16-13/64")
\$33.00 EACH

WATCHMAKER SPINDLE

Uses B-8 collets.
#102.200 (2800) \$150.00



8 PIECE COLLET SET

Inch type (1/32-1/4 by 1/32) B-8.
#102.300 (2815) \$150.00



8 PIECE COLLET SET

Metric (1-8mm by 1mm) B-8.
#102.300 (2815) \$170.00

SINGLE COLLETS TYPE B-8

#102.301 1/32" #102.305 5/32"
#102.302 1/16" #102.306 3/16"
#102.303 3/32" #102.307 7/32"
#102.304 1/8" #102.308 1/4"

\$23.00 EACH



FIXED STEADY REST

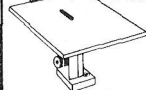
#104.000 (1040) \$35.00

JOINTER & ROUTER ATTACHMENT

#106.200 (1060) \$49.00

FRET & JIG SAW ATTACHMENT

With one dozen saw blades.
#108.000 (1080) \$106.50



ADJUSTABLE TOOL REST #120.200 (1202) \$32.50

DRIVE CENTER

#120.500 (1205) \$8.00

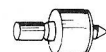


MILLING TABLE WITH CLAMPS

#121.000 (1210) \$42.50

SET OF CLAMPS FOR MILLING TABLE

#121.200 (1210/2) \$10.00

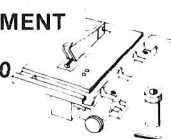


LIVE CENTER #122.200 (1221) \$22.00

CIRCULAR SAW ATTACHMENT

Without blade.

#124.000 (1240) \$59.00



MITRE GAUGE FOR CIRCULAR SAW

#124.100 (1244) \$14.75



ARBOR FOR GEAR MILLING CUTTERS

#124.500 \$15.25

INDEXING & DIVIDING ATTACHMENT

With division plate 48.

#126.000 (1260) \$52.00



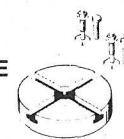
DIVISION PLATES

For Indexing Attachment.

#126.500 Division Plate 30
#126.600 Division Plate 36
#126.700 Division Plate 40
\$15.50 EACH

CIRCULAR CLAMPING TABLE

#126.100 (1261) \$39.50



THREADING ATTACHMENT

Without formers and guides.
#127.000 (1270) \$80.50



9 PIECE FORMER & GUIDE SET

Metric (0.5-1.5mm).

#127.100 (1271) \$125.00

14 PIECE FORMER & GUIDE SET

Inch (18-56 tpi).

#127.150 (1271) \$165.00

SINGLE FORMERS & GUIDES (INCH)

#127.151 16 tpi #127.158 30 tpi
#127.152 18 tpi #127.159 32 tpi
#127.153 20 tpi #127.160 36 tpi
#127.154 22 tpi #127.161 40 tpi
#127.155 24 tpi #127.162 48 tpi
#127.156 26 tpi #127.163 50 tpi
#127.157 28 tpi #127.164 56 tpi

\$15.00 EACH

AUTOMATIC LONGITUDINAL POWER FEED

#129.000 (1290) \$116.00



SANDING DISC SUPPORT

#133.000 (1330) \$19.00

TOOL GRINDER GUARD

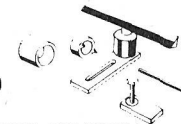
#134.000 (1115) \$17.00



INTERMEDIATE PIECE (Headstock Raising Block). #131.100 \$10.00

WOOD TURNING ATTACHMENT

#139.500 (1390) \$48.50



OPERATING & SPARE PARTS MANUAL FOR UNIMAT SL

#992.020 \$7.00