


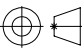
REVISIONS			
REV.	DESCRIPTION	DATE	APPROVED
...

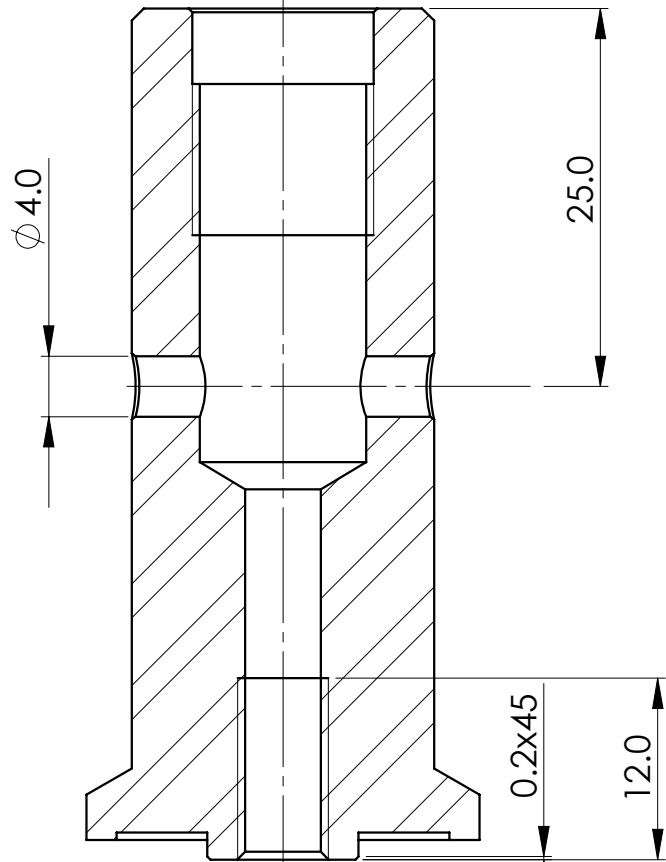
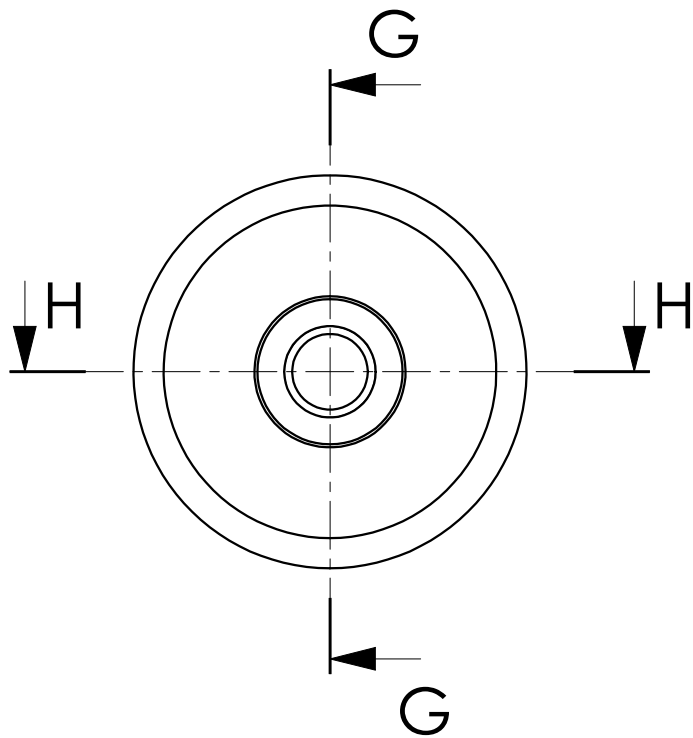
- NOTES:
- UNIMAT MK.4, CAST IRON BED, CONVEX ROUND
 - CENTERING SPIGOT ON THE ARBOR TO BE FINISHED TO SUIT SAW BLADE I.D.
 - FOR ORIGINAL UNIMAT VERSION, SEE DWG UNI-009 (16mm SAW BLADE INTERNAL DIAMETER)

NOTICE:

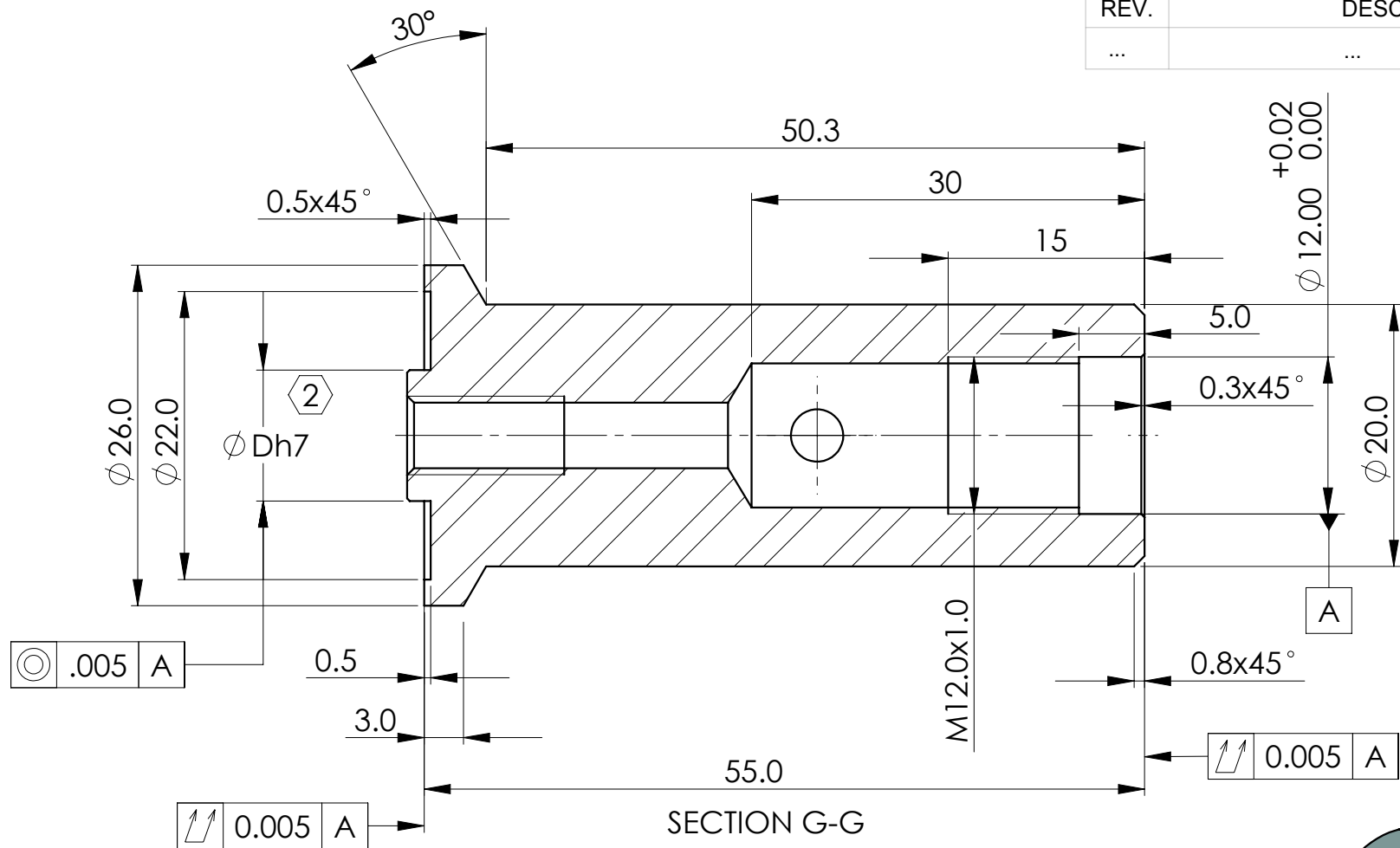
The information contained hereon is the sole property of CNCWINGS. This drawing and/or technical data is issued in confidence for information only and may not be reproduced or used to manufacture anything shown or referred to hereon without direct written permission from CNCWINGS to the user. This drawing and/or technical data is loaned for mutual assistance and is to be returned or destroyed after use. THIS DRAWING AND/OR TECHNICAL DATA IS THE PROPERTY OF CNCWINGS

4		SCREW, M6x12, HSC, BLACK OXIDE	COMMERCIAL	1
3		CIRCULAR SAW BLADE, 10mm I.D., (PROXON)	COMMERCIAL	1
2	UNI-012-2	CIRCULAR SAW ARBOR, WASHER, M6, UNIMAT DB/SL	UNIMAT	1
1	UNI-012-1	CIRCULAR SAW ARBOR, BODY, M6, UNIMAT DB/SL	UNIMAT	1
ITEM	PART NUMBER	DESCRIPTION	MANUFACTURER	QTY.

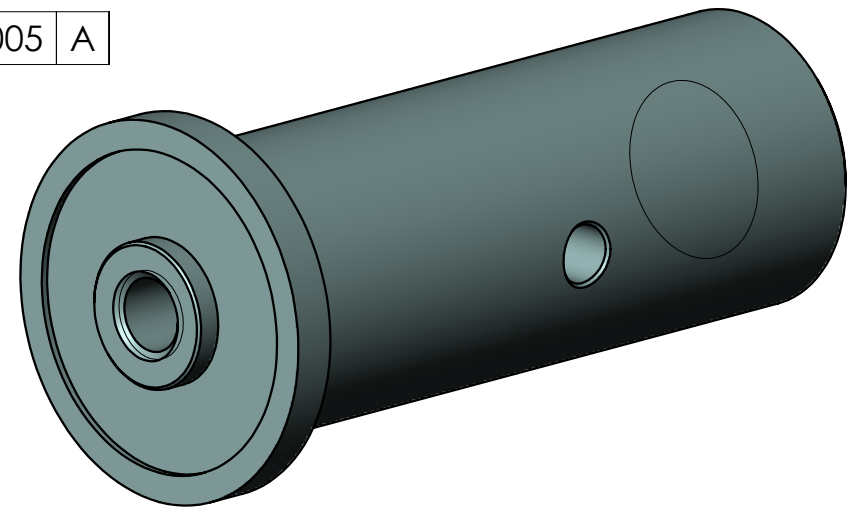
MASS: 144.9 grams		PARTS LIST		
UNLESS OTHERWISE SPECIFIED DIMENSIONS ARE IN: MILLIMETERS		JOB NO: UNI		 WWW.CNCWINGS.COM
		DRAWN: R.GARGULAK	DATE:	
TOLERANCES ARE: X.± 0.8 .X± 0.5 .X°± 1° .XX± 0.1 .XXX± 0.05		DESIGNED:	DATE:	TITLE: CIRCULAR SAW ARBOR ALTERNATIVE, M6 UNIMAT DB/SL
		CHECKED:	DATE:	
MATERIAL: SEE NOTES BOM		APPROVED:	DATE:	SIZE: FSCM No. DRAWING NUMBER: REV
FINISH: SEE NOTES		APPLICATION: UNI-000		B N/A UNI-012 A
SIMILAR TO: 		SCALE 2:1	RELEASE DATE: N/A	SHEET: 1 OF 3



SECTION H-H



SECTION G-G



REVISIONS

REV.	DESCRIPTION	DATE	APPROVED
...

NOTES:

- UNIMAT MK.4, CAST IRON BED, CONVEX ROUND
- DIAMETER ``D`` TO BE MACHINED TO FIT SAW BLADE I.D.

MASS: 113.4 grams
UNLESS OTHERWISE SPECIFIED DIMENSIONS ARE IN: MILLIMETERS
TOLERANCES ARE: X.± .8 .X± .5 .XX± .1 .XXX± .05
MATERIAL: ANSI 1020 STEEL
FINISH: BLACK OXIDE
SIMILAR TO: N/A

PARTS LIST

JOB NO: UNI	DRAWN: R.GARGULAK	DESIGNED:	CHECKED:	APPROVED:	APPLICATION: UNI-012
DATE:	DATE:	DATE:	DATE:	DATE:	



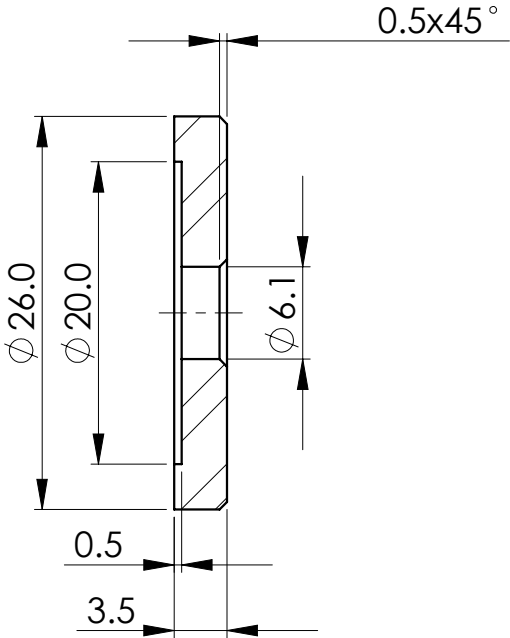
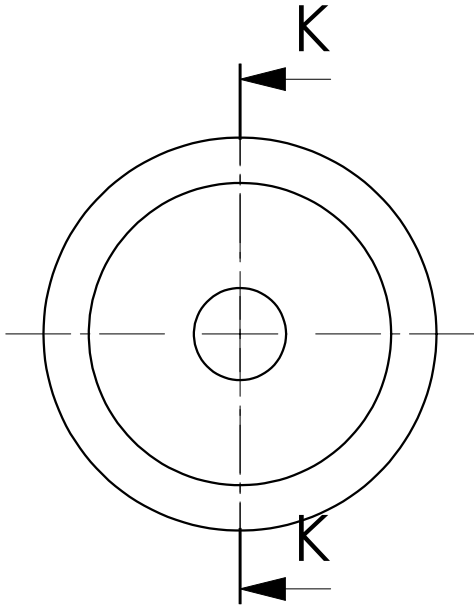
WWW.CNCWINGS.COM

TITLE: CIRCULAR SAW ARBOR BODY, M6 UNIMAT DB/SL			
SIZE: B	FSCM No.	DRAWING NUMBER: UNI-012-1	REV A
SCALE 2:1	RELEASE DATE: N/A	SHEET: 2 OF 3	

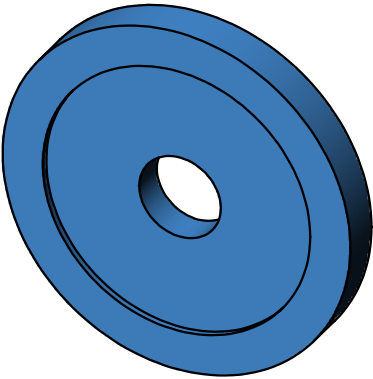
NOTICE:

The information contained hereon is the sole property of CNCWINGS. This drawing and/or technical data is issued in confidence for information only and may not be reproduced or used to manufacture anything shown or referred to hereon without direct written permission from CNCWINGS to the user. This drawing and/or technical data is loaned for mutual assistance and is to be returned or destroyed after use. THIS DRAWING AND/OR TECHNICAL DATA IS THE PROPERTY OF CNCWINGS

REVISIONS			
REV.	DESCRIPTION	DATE	APPROVED
...


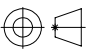


SECTION K-K



- NOTES:
1. UNIMAT MK.4, CAST IRON BED, CONVEX ROUND

NOTICE:
The information contained hereon is the sole property of CNCWINGS. This drawing and/or technical data is issued in confidence for information only and may not be reproduced or used to manufacture anything shown or referred to hereon without direct written permission from CNCWINGS to the user. This drawing and/or technical data is loaned for mutual assistance and is to be returned or destroyed after use. THIS DRAWING AND/OR TECHNICAL DATA IS THE PROPERTY OF CNCWINGS

MASS: 12.6 grams		PARTS LIST			
UNLESS OTHERWISE SPECIFIED DIMENSIONS ARE IN: MILLIMETERS		JOB NO: UNI		 WWW.CNCWINGS.COM	
		DRAWN: R.GARGULAK	DATE:		
TOLERANCES ARE: X.± .8 .X± .5 .XX± .1 .XXX± .05		DESIGNED:	DATE:	TITLE: CIRCULAR SAW ARBOR WASHER, M6 UNIMAT DB/SL	
		CHECKED:	DATE:		
MATERIAL: ANSI 1020 STEEL		APPROVED:	DATE:	SIZE: B	FSCM No.
FINISH: BLACK OXIDE		APPLICATION: UNI-012		DRAWING NUMBER: UNI-012-2	REV A
SIMILAR TO: N/A				SCALE 2:1	RELEASE DATE: N/A
				SHEET: 3 OF 3	