

NOTES:  
1. UNIMAT MK.4, CAST IRON BED, CONVEX ROUND  
2. ADJUST LENGTH AS REQUIRED  
3. TWO SETS SUPPLIED WITH MILLING TABLE DB 1020

NOTICE:  
The information contained hereon is the sole property of CNCWINGS. This drawing and/or technical data is issued in confidence for information only and may not be reproduced or used to manufacture anything shown or referred to hereon without direct written permission from CNCWINGS to the user. This drawing and/or technical data is loaned for mutual assistance and is to be returned or destroyed after use. THIS DRAWING AND/OR TECHNICAL DATA IS THE PROPERTY OF CNCWINGS

6		WASHER, FLAT, M6, 1.6mm THICK, 12mm OD, BLACK OXIDE	COMMERCIAL	1
5		THREADED ROD, M6x50, BLACK OXIDE	COMMERCIAL	1
4		NUT, HEX, M6, BLACK OXIDE	COMMERCIAL	1
3		SCREW, M6x20, HSC, BLACK OXIDE	COMMERCIAL	1
2	A2Z351010	CLAMP, UNIMAT DB/SL	UNIMAT	1
1	A2A070020	T-SLOT NUT, UNIMAT DB/SL	UNIMAT	1
ITEM	PART NUMBER	DESCRIPTION	MANUFACTURER	QTY.

MASS:  
54.1 grams

UNLESS OTHERWISE SPECIFIED  
DIMENSIONS ARE IN:  
MILLIMETERS

TOLERANCES ARE:  
X.± 0.8  
.X± .5 .X°± 1°  
.XX± .1  
.XXX± .05

MATERIAL:  
BOM

FINISH:

SIMILAR TO:  
N/A

JOB NO:  
UNI

DRAWN:  
R.GARGULAK

DESIGNED:

CHECKED:

APPROVED:

APPLICATION:  
UNI-000

DATE:

DATE:  
01/04/2013

DATE:

DATE:

W W W . C N C W I N G S . C O M

TITLE:  
CLAMP SET  
UNIMAT DB/SL  
DB 1020/2

SIZE:  
B

FSCM No.

DRAWING NUMBER:  
DB 1020/2

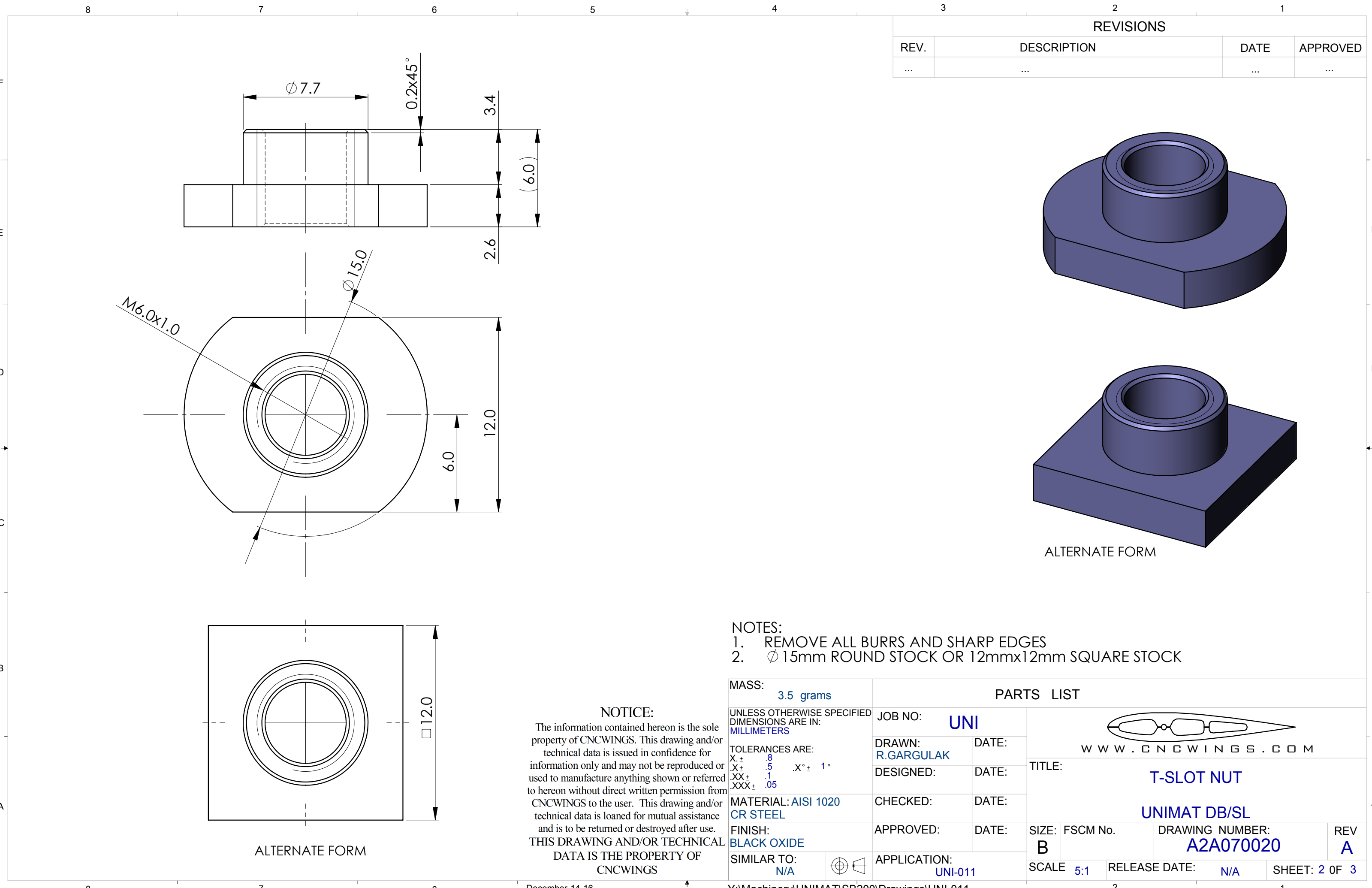
REV  
-

SCALE  
1:1

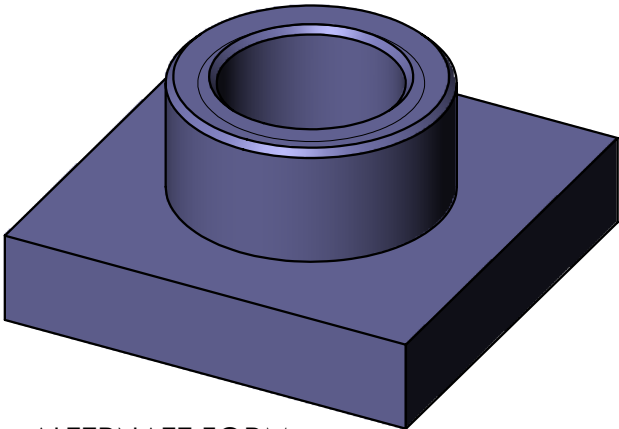
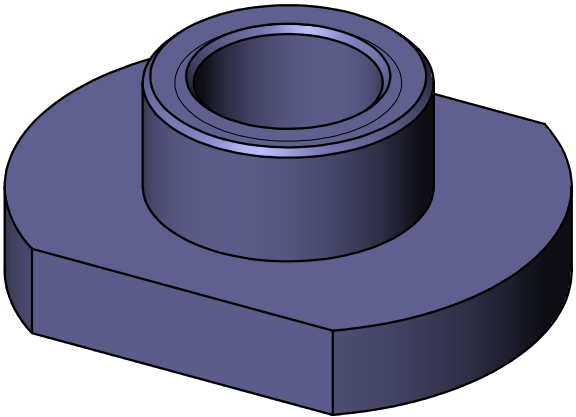
RELEASE DATE:  
N/A

SHEET: 1 OF 3

REVISIONS			
REV.	DESCRIPTION	DATE	APPROVED
...	...	...	...



REVISIONS			
REV.	DESCRIPTION	DATE	APPROVED
...	...	...	...




ALTERNATE FORM

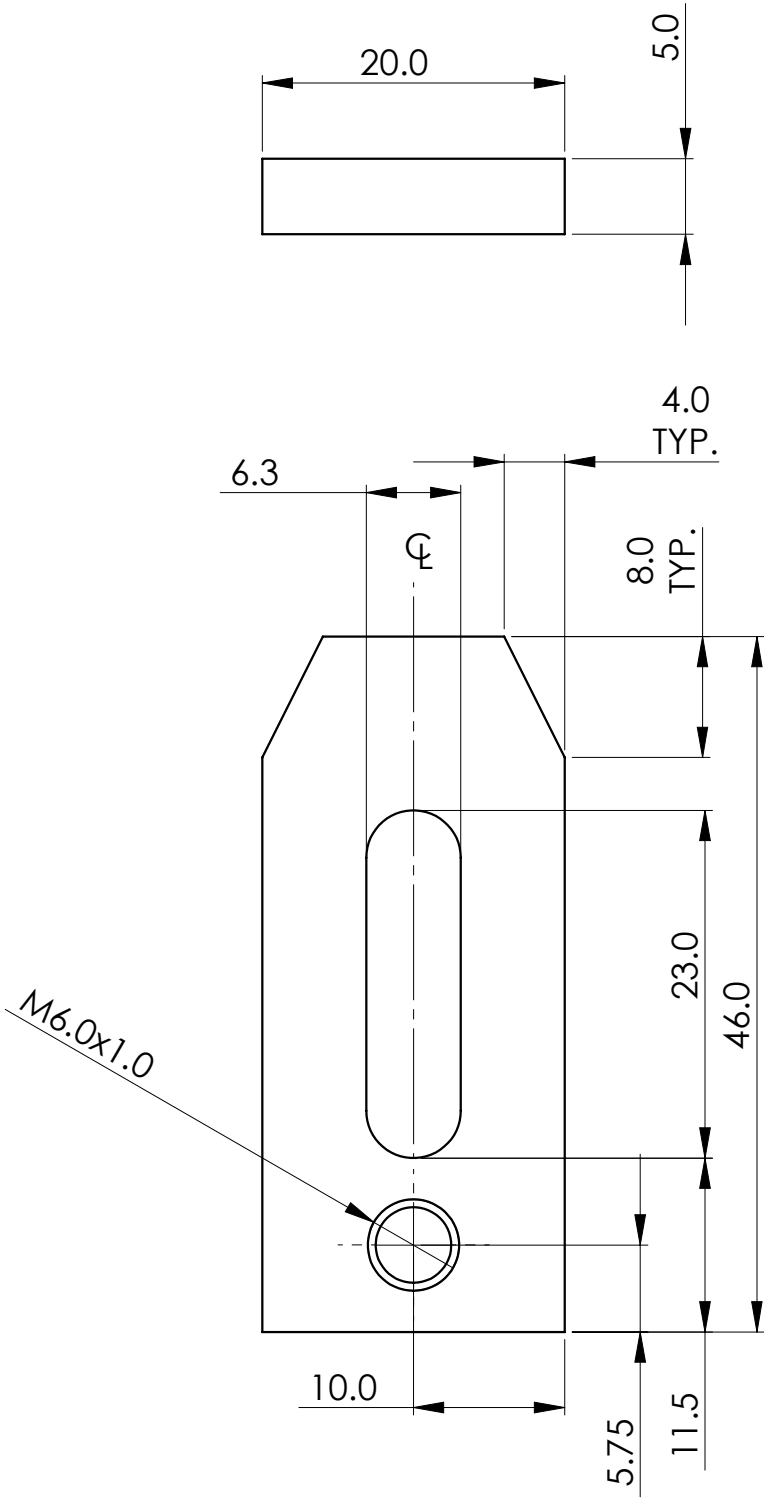
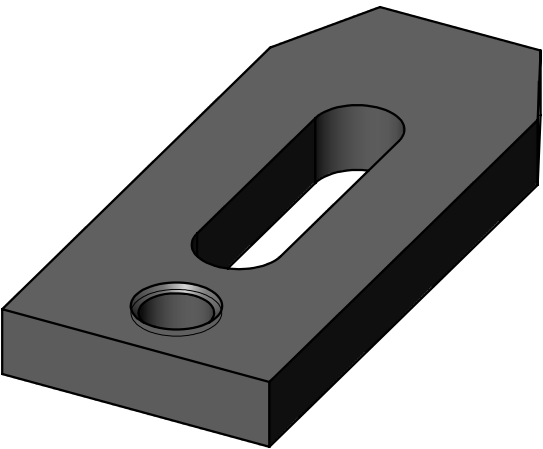
- NOTES:
- REMOVE ALL BURRS AND SHARP EDGES
  - Ø 15mm ROUND STOCK OR 12mmx12mm SQUARE STOCK

NOTICE:

The information contained hereon is the sole property of CNCWINGS. This drawing and/or technical data is issued in confidence for information only and may not be reproduced or used to manufacture anything shown or referred to hereon without direct written permission from CNCWINGS to the user. This drawing and/or technical data is loaned for mutual assistance and is to be returned or destroyed after use. THIS DRAWING AND/OR TECHNICAL DATA IS THE PROPERTY OF CNCWINGS


MASS: 3.5 grams		PARTS LIST			
UNLESS OTHERWISE SPECIFIED DIMENSIONS ARE IN: MILLIMETERS		JOB NO: UNI		 WWW.CNCWINGS.COM	
		DRAWN: R.GARGULAK	DATE:		
TOLERANCES ARE: X.± .8 .X± .5 .XX± .1 .XXX± .05		DESIGNED:	DATE:	TITLE: T-SLOT NUT	
MATERIAL: AISI 1020 CR STEEL		CHECKED:	DATE:	UNIMAT DB/SL	
FINISH: BLACK OXIDE		APPROVED:	DATE:	SIZE: B	FSCM No.
SIMILAR TO: N/A		APPLICATION: UNI-011		DRAWING NUMBER: A2A070020	
				SCALE: 5:1	RELEASE DATE: N/A
				SHEET: 2 OF 3	

REVISIONS			
REV.	DESCRIPTION	DATE	APPROVED
...	...	...	...



**NOTICE:**  
The information contained hereon is the sole property of CNCWINGS. This drawing and/or technical data is issued in confidence for information only and may not be reproduced or used to manufacture anything shown or referred to hereon without direct written permission from CNCWINGS to the user. This drawing and/or technical data is loaned for mutual assistance and is to be returned or destroyed after use. THIS DRAWING AND/OR TECHNICAL DATA IS THE PROPERTY OF CNCWINGS

- NOTES:
- UNIMAT MK.4, CAST IRON BED, CONVEX ROUND
  - REMOVE ALL BURS AND SHARP EDGES
  - FLAT BAR CR STEEL 20mmx5mm

MASS: 28.6 grams		PARTS LIST			
UNLESS OTHERWISE SPECIFIED DIMENSIONS ARE IN: MILLIMETERS  TOLERANCES ARE: X.± .5 .X± .1 .X°± 1° .XX± .05 .XXX± .008  MATERIAL: CR STEEL  FINISH: BLACK OXIDE  SIMILAR TO: N/A		JOB NO: UNI		 WWW.CNCWINGS.COM	
		DRAWN: R.GARGULAK		DATE:	
		DESIGNED: R.GARGULAK		DATE: 01/04/2013	
		CHECKED:		DATE:	
APPROVED:		DATE:		TITLE: CLAMP	
APPLICATION: UNI-011		DATE:		UNIMAT DB/SL	
APPROVED:		DATE:		DRAWING NUMBER: A2Z351010	
APPROVED:		DATE:		REV A	
APPROVED:		DATE:		SHEET: 3 OF 3	