
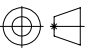


REVISIONS			
REV.	DESCRIPTION	DATE	APPROVED
...

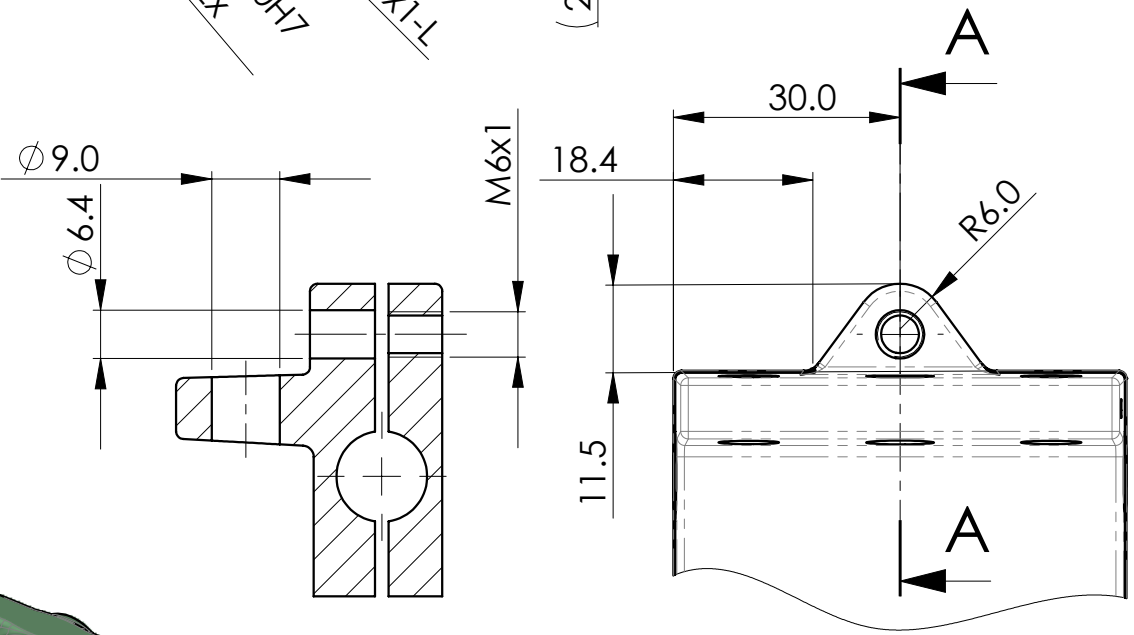
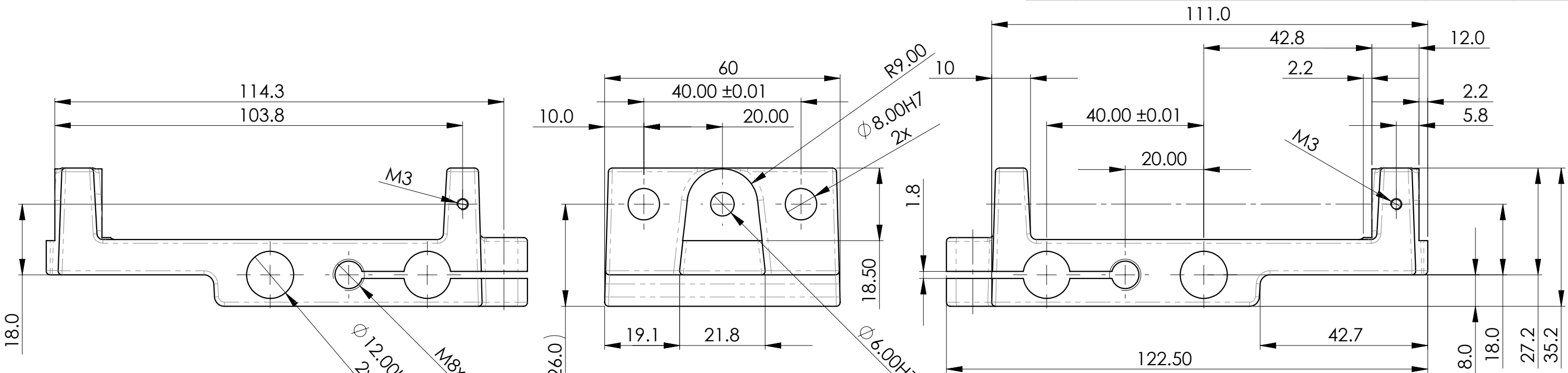
9		SET SCREW, M3x8, SLOTTED, CONE POINT	COMMERCIAL	2
8		SCREW, M6x20, HSC, BLACK OXIDE	COMMERCIAL	1
7		SCREW, M6x12, HSC, BLACK OXIDE	COMMERCIAL	1
6	ZMU170500	NUT, DOMED, M5	UNIMAT	1
5	A2A020050	HAND WHEEL	UNIMAT	1
4	A2A020040	LEAD SCREW, CARRIAGE, M8x1-L	UNIMAT	1
3	A2A020030	CARRIAGE CASTING	UNIMAT	1
2	A2A020020	WAY BAR, CARRIAGE, 8mm	UNIMAT	2
1	A2A020010	CROSS SLIDE CASTING	UNIMAT	1
ITEM	PART NUMBER	DESCRIPTION	MANUFACTURER	QTY.

NOTES:
1. UNIMAT MK.4, CAST IRON BED, CONVEX ROUND

NOTICE:
The information contained hereon is the sole property of CNCWINGS. This drawing and/or technical data is issued in confidence for information only and may not be reproduced or used to manufacture anything shown or referred to hereon without direct written permission from CNCWINGS to the user. This drawing and/or technical data is loaned for mutual assistance and is to be returned or destroyed after use. THIS DRAWING AND/OR TECHNICAL DATA IS THE PROPERTY OF CNCWINGS

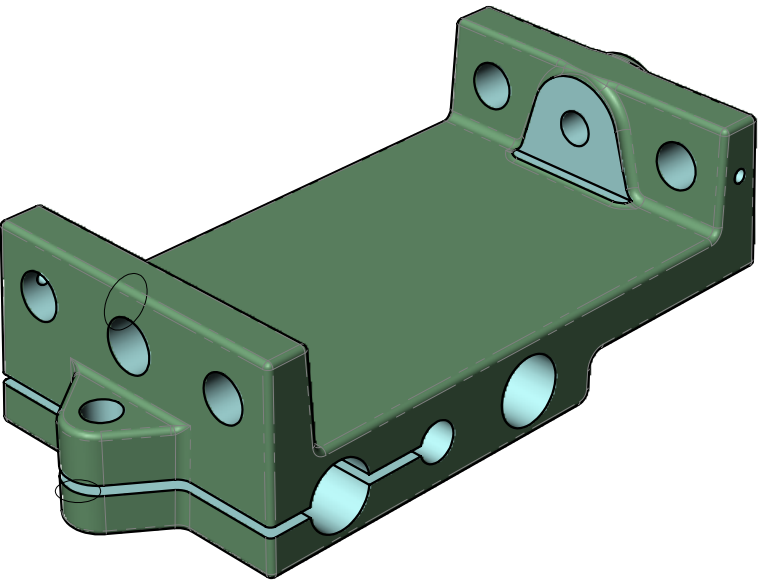
MASS: 1032.58 grams		PARTS LIST			
UNLESS OTHERWISE SPECIFIED DIMENSIONS ARE IN: MILLIMETERS		JOB NO: UNI		 WWW.CNCWINGS.COM	
		DRAWN: R.GARGULAK	DATE:		
TOLERANCES ARE: X.± 0.5 .X± .1 .X°± 1° .XX± .05 .XXX± .008		DESIGNED:	DATE:	TITLE: CROSS SLIDDE ASSEMBLY STANDARD	
		CHECKED:	DATE:		
MATERIAL: BOM BOM		APPROVED:	DATE:	SIZE: B	FSCM No.
FINISH: SEE NOTES		APPLICATION: UNI-000		DRAWING NUMBER: UNI-010	REV A
SIMILAR TO: N/A				SCALE 1:1	RELEASE DATE: N/A
				SHEET: 1 OF 5	

REVISIONS			
REV.	DESCRIPTION	DATE	APPROVED
...




SECTION A-A

- NOTES:
- 1. UNIMAT MK.4, CAST IRON BED, CONVEX ROUND
 - 2. ALL FILLET RADIUS R=1mm
 - 3. ALL DRAFTS 1°

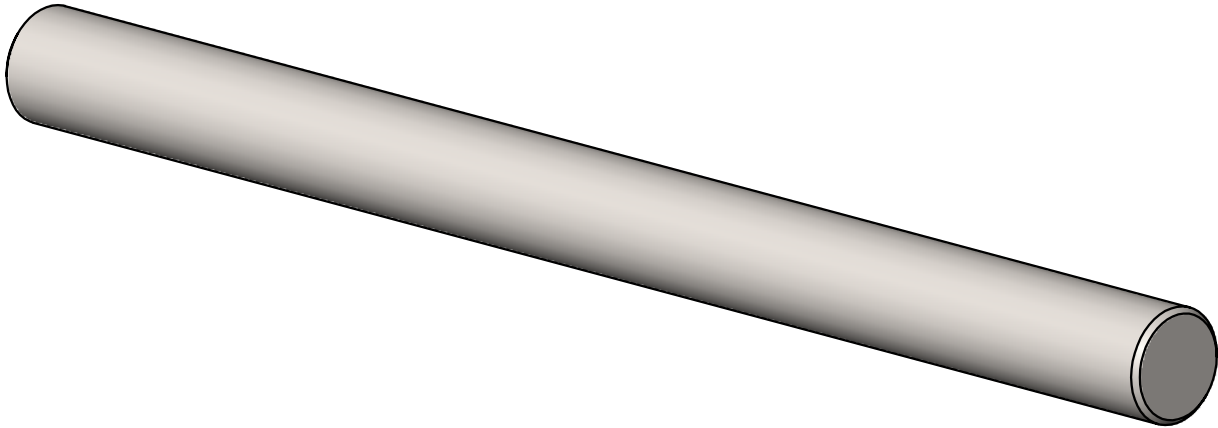
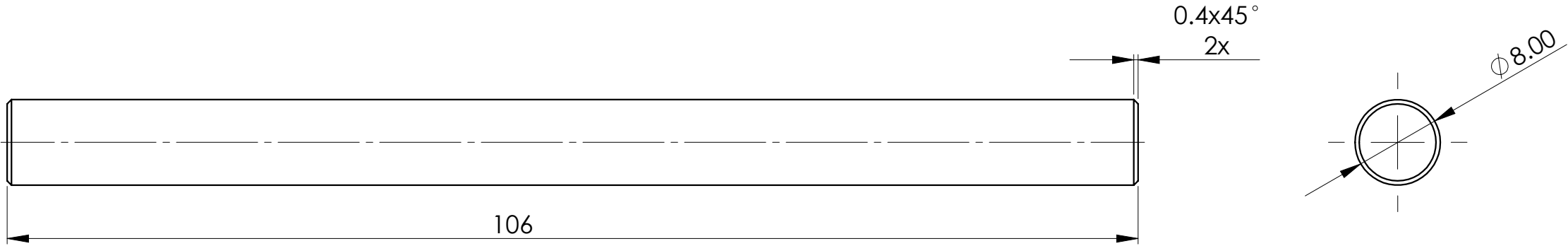


NOTICE:

The information contained hereon is the sole property of CNCWINGS. This drawing and/or technical data is issued in confidence for information only and may not be reproduced or used to manufacture anything shown or referred to hereon without direct written permission from CNCWINGS to the user. This drawing and/or technical data is loaned for mutual assistance and is to be returned or destroyed after use. THIS DRAWING AND/OR TECHNICAL DATA IS THE PROPERTY OF CNCWINGS


MASS: 652.7 grams		PARTS LIST			
UNLESS OTHERWISE SPECIFIED DIMENSIONS ARE IN: MILLIMETERS		JOB NO: UNI		 WWW.CNCWINGS.COM	
TOLERANCES ARE: X.± .5 .X± .1 .XX± .05 .XXX± .005		DRAWN: R.GARGULAK	DATE:		
MATERIAL: CAST IRON		DESIGNED:	DATE:	TITLE: CROSS SLIDE CASTING	
FINISH: SEE NOTES		CHECKED:	DATE:	SIZE: B	
SIMILAR TO: N/A		APPROVED:	DATE:	DRAWING NUMBER: A2A020010	
		APPLICATION: UNI-010	DATE:	SCALE 1:1	REV A
				RELEASE DATE: N/A	SHEET: 2 OF 5

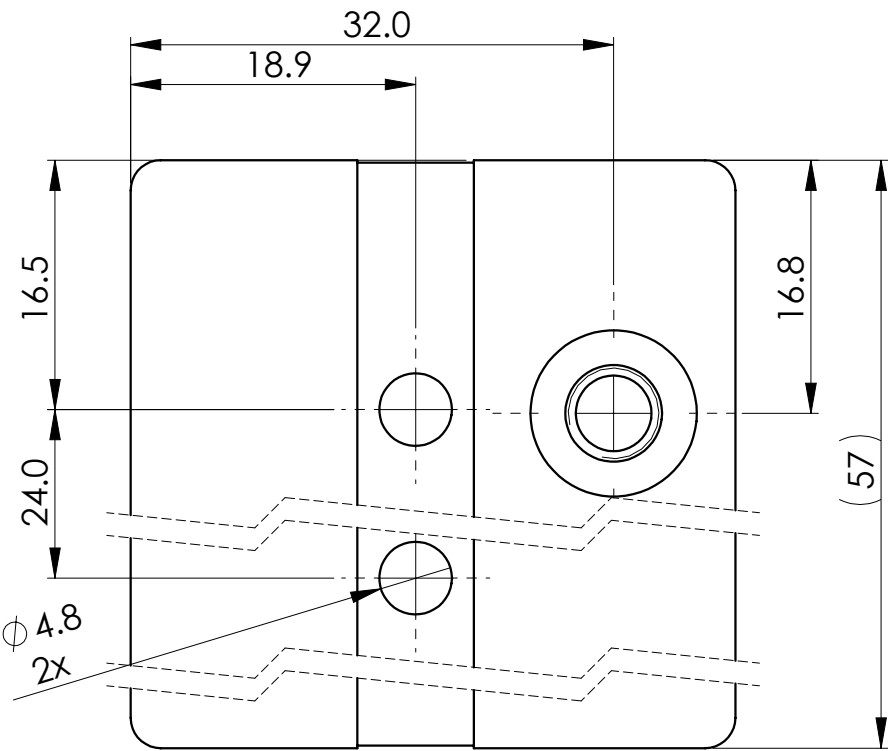
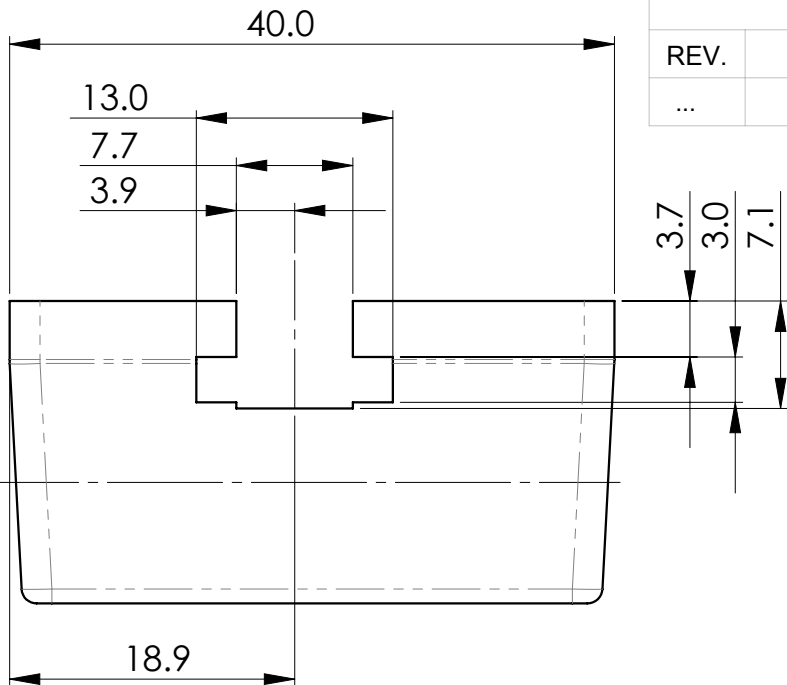
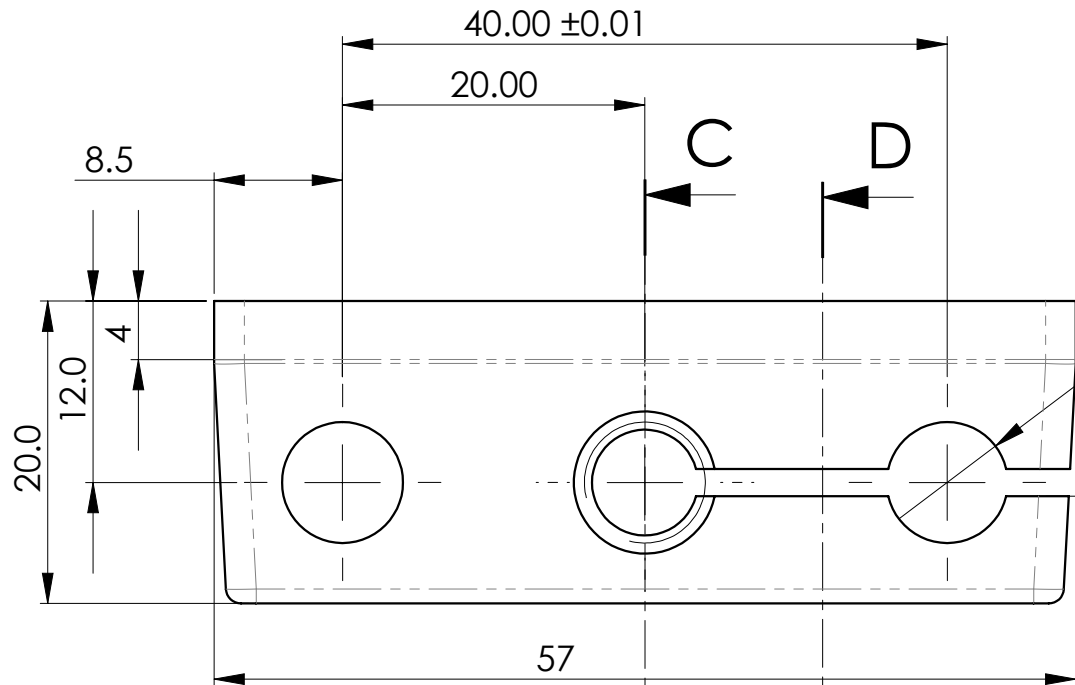
REVISIONS			
REV.	DESCRIPTION	DATE	APPROVED
...



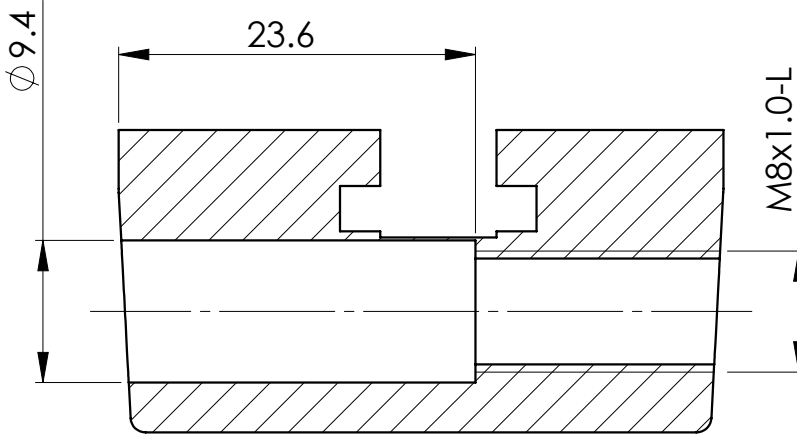
NOTES:
1. UNIMAT MK.4, CAST IRON BED, CONVEX ROUND

NOTICE:
The information contained hereon is the sole property of CNCWINGS. This drawing and/or technical data is issued in confidence for information only and may not be reproduced or used to manufacture anything shown or referred to hereon without direct written permission from CNCWINGS to the user. This drawing and/or technical data is loaned for mutual assistance and is to be returned or destroyed after use. THIS DRAWING AND/OR TECHNICAL DATA IS THE PROPERTY OF CNCWINGS

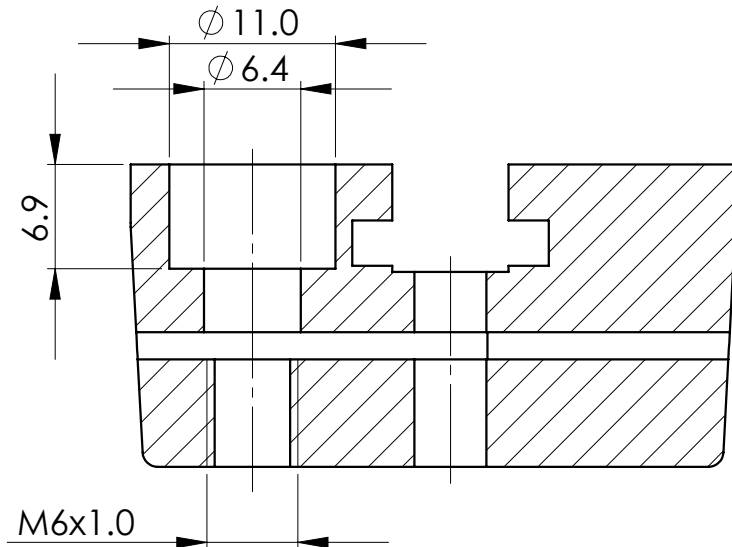
MASS: 41.5 grams		PARTS LIST						
UNLESS OTHERWISE SPECIFIED DIMENSIONS ARE IN: MILLIMETERS (INCHES) TOLERANCES ARE: X.± .5 .X± .1 X°± 1° .XX± .05 .XXX± .005 MATERIAL: STEEL PRECISION GROUND SHAFT FINISH: SEE NOTES SIMILAR TO: N/A		JOB NO: UNI		 WWW.CNCWINGS.COM				
		DRAWN: R.GARGULAK						
		DESIGNED:		DATE:		TITLE: WAY BAR, CARRIAGE, 8mm		
		CHECKED:		DATE:				
APPROVED:		DATE:		SIZE: B	FSCM No.	DRAWING NUMBER: A2A020020	REV A	
APPLICATION: UNI-010		SCALE 2:1		RELEASE DATE: N/A		SHEET: 3 OF 5		



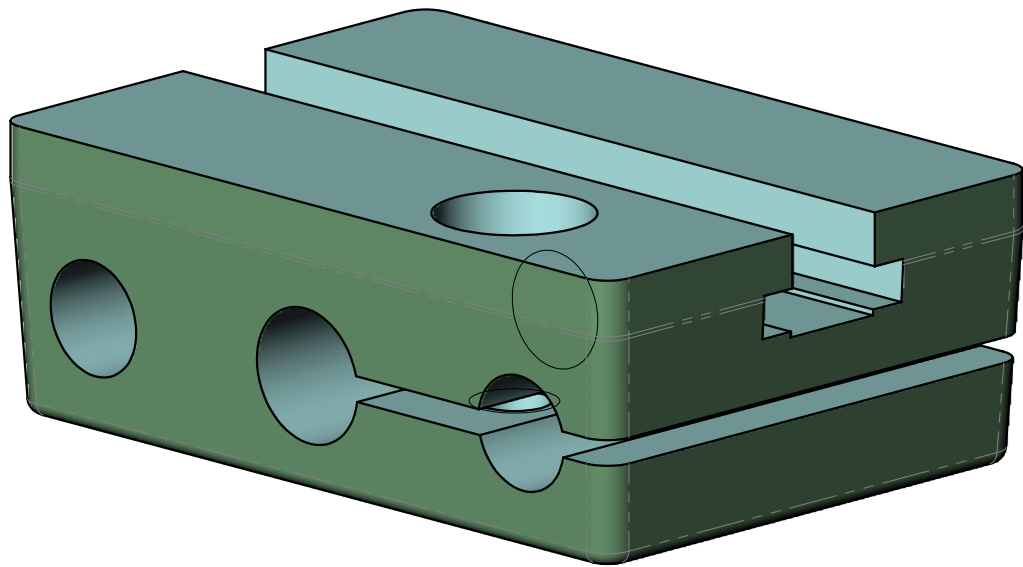
REVISIONS			
REV.	DESCRIPTION	DATE	APPROVED
..



SECTION C-C
SCALE 2 : 1



SECTION D-D
SCALE 2 : 1




- NOTES:
- UNIMAT MK.4, CAST IRON BED, CONVEX ROUND
 - ALL FILLET RADIUSES R=1mm
 - ALL DRAFTS 3°

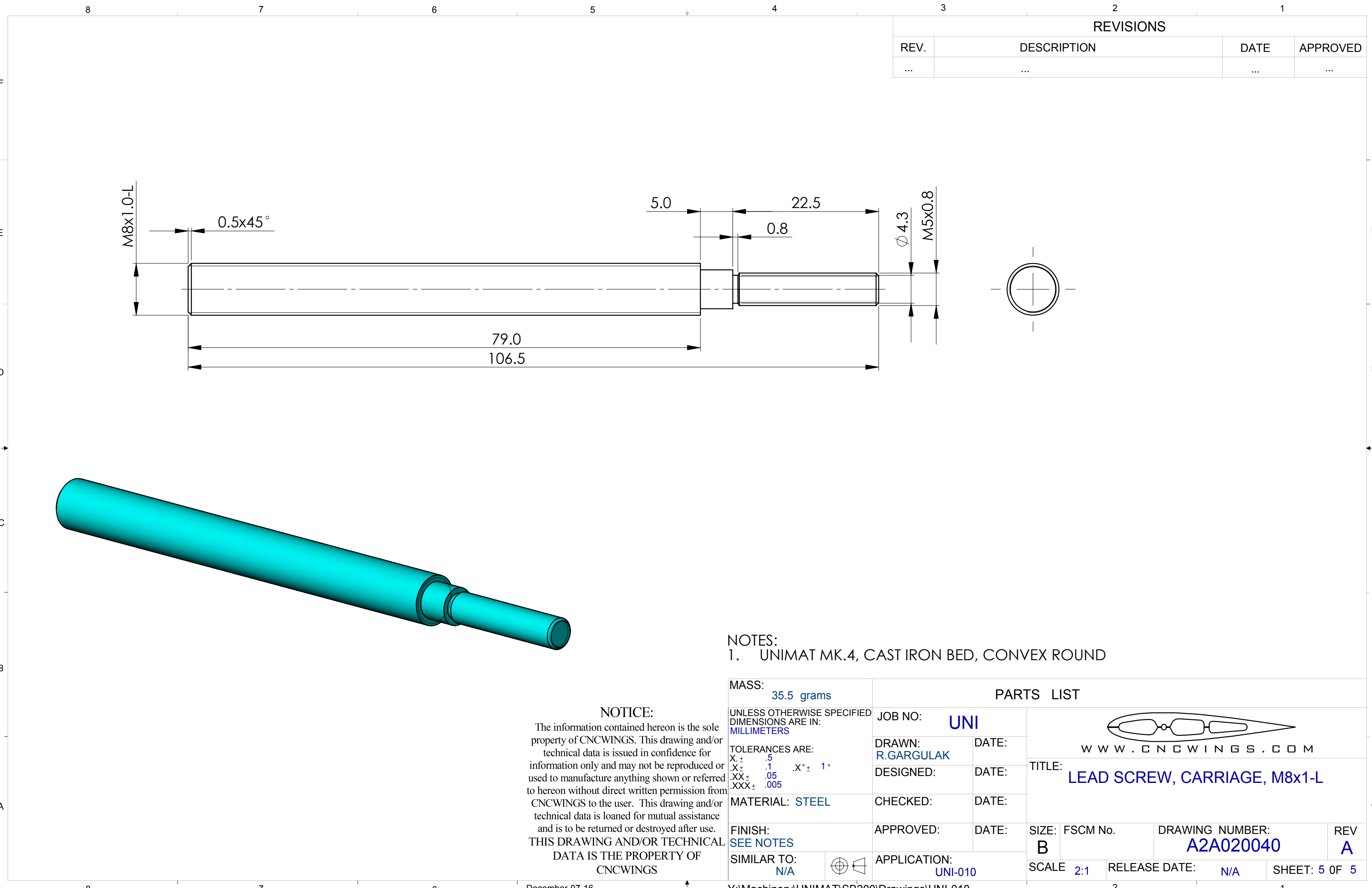
NOTICE:

The information contained hereon is the sole property of CNCWINGS. This drawing and/or technical data is issued in confidence for information only and may not be reproduced or used to manufacture anything shown or referred to hereon without direct written permission from CNCWINGS to the user. This drawing and/or technical data is loaned for mutual assistance and is to be returned or destroyed after use. THIS DRAWING AND/OR TECHNICAL DATA IS THE PROPERTY OF CNCWINGS

MASS: 224.0 grams	
UNLESS OTHERWISE SPECIFIED DIMENSIONS ARE IN: MILLIMETERS	
TOLERANCES ARE: X.± .5 .X± .1 .XX± .05 .XXX± .005	
MATERIAL: CAST IRON	
FINISH: SEE NOTES	
SIMILAR TO: N/A	




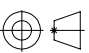
PARTS LIST			
JOB NO: UNI		 WWW.CNCWINGS.COM	
DRAWN: DRAWN	DATE:		
DESIGNED:	DATE:	TITLE: CARRIAGE CASTING	
CHECKED:	DATE:		
APPROVED:	DATE:		
APPLICATION: UNI-010		SIZE: B	FSCM No. DRAWING NUMBER: A2A020030 REV A
		SCALE 1:1	RELEASE DATE: N/A SHEET: 4 OF 5



REVISIONS			
REV.	DESCRIPTION	DATE	APPROVED
...

NOTES:
1. UNIMAT MK.4, CAST IRON BED, CONVEX ROUND

NOTICE:
The information contained hereon is the sole property of CNCWINGS. This drawing and/or technical data is issued in confidence for information only and may not be reproduced or used to manufacture anything shown or referred to hereon without direct written permission from CNCWINGS to the user. This drawing and/or technical data is loaned for mutual assistance and is to be returned or destroyed after use. THIS DRAWING AND/OR TECHNICAL DATA IS THE PROPERTY OF CNCWINGS

MASS: 35.5 grams		PARTS LIST			
UNLESS OTHERWISE SPECIFIED DIMENSIONS ARE IN: MILLIMETERS		JOB NO: UNI		 WWW.CNCWINGS.COM	
TOLERANCES ARE: X.± .5 .X± .1 .X°± 1° .XX± .05 .XXX± .005		DRAWN: R.GARGULAK	DATE:		
MATERIAL: STEEL		DESIGNED:	DATE:	TITLE: LEAD SCREW, CARRIAGE, M8x1-L	
FINISH: SEE NOTES		CHECKED:	DATE:	SIZE: FSCM No. DRAWING NUMBER: REV B A2A020040 A	
SIMILAR TO: N/A		APPROVED:	DATE:		
		APPLICATION: UNI-010		SCALE 2:1	RELEASE DATE: N/A
December-07-16		Y:\Machinery\UNIMAT\SB200\Drawings\UNI-010		2	1