



REVISIONS			
REV.	DESCRIPTION	DATE	APPROVED
...

4		CIRCULAR SAW BLADE, 16mm I.D.	COMMERCIAL	1
3	KIT #1230/1-3	CIRCULAR SAW ARBOR, SCREW, UNIMAT DB/SL	UNIMAT	1
2	KIT #1230/1-2	CIRCULAR SAW ARBOR, WASHER, UNIMAT DB/SL	UNIMAT	1
1	KIT #1230/1-1	CIRCULAR SAW ARBOR, BODY, UNIMAT DB/SL	UNIMAT	1
ITEM	PART NUMBER	DESCRIPTION	MANUFACTURER	QTY.

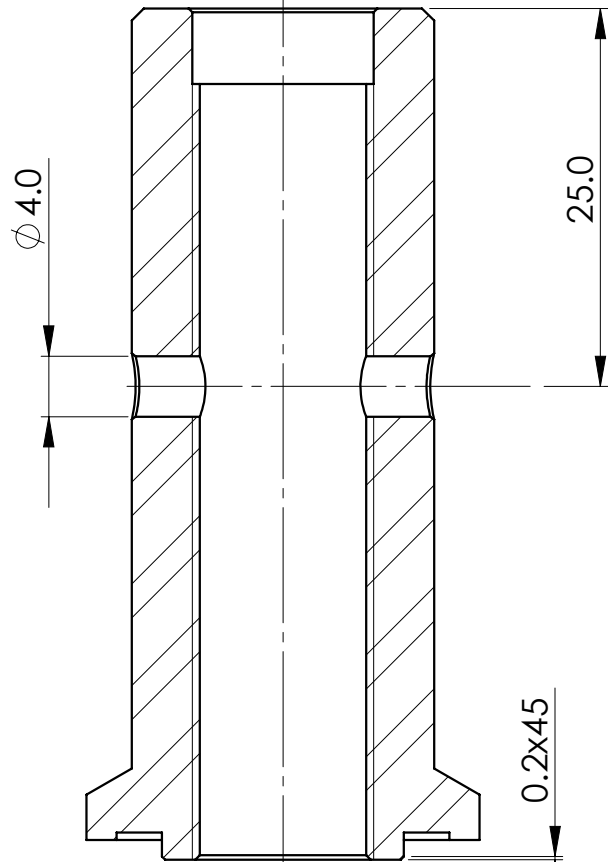
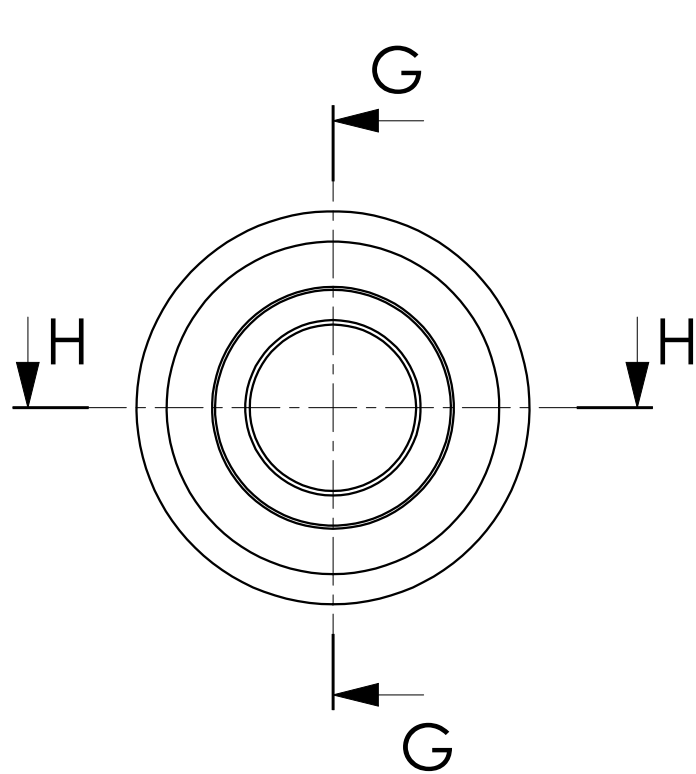
MASS: 138.4 grams		PARTS LIST					
UNLESS OTHERWISE SPECIFIED DIMENSIONS ARE IN: MILLIMETERS		JOB NO: UNI		<div></div> <div>WWW.CNCWINGS.COM</div>			
		DRAWN: R.GARGULAK	DATE:				
TOLERANCES ARE: X.± 0.8 .X± 0.5 .X°± 1° .XX± 0.1 .XXX± 0.05		DESIGNED:	DATE:	TITLE: CIRCULAR SAW ARBOR			
MATERIAL: SEE NOTES BOM		CHECKED:	DATE:				
FINISH: SEE NOTES		APPROVED:	DATE:	SIZE: B	FSCM No.	DRAWING NUMBER: UNI-009	REV A
SIMILAR TO:		APPLICATION: UNI-000		SCALE 2:1	RELEASE DATE:	N/A	SHEET: 1 OF 4

NOTICE:

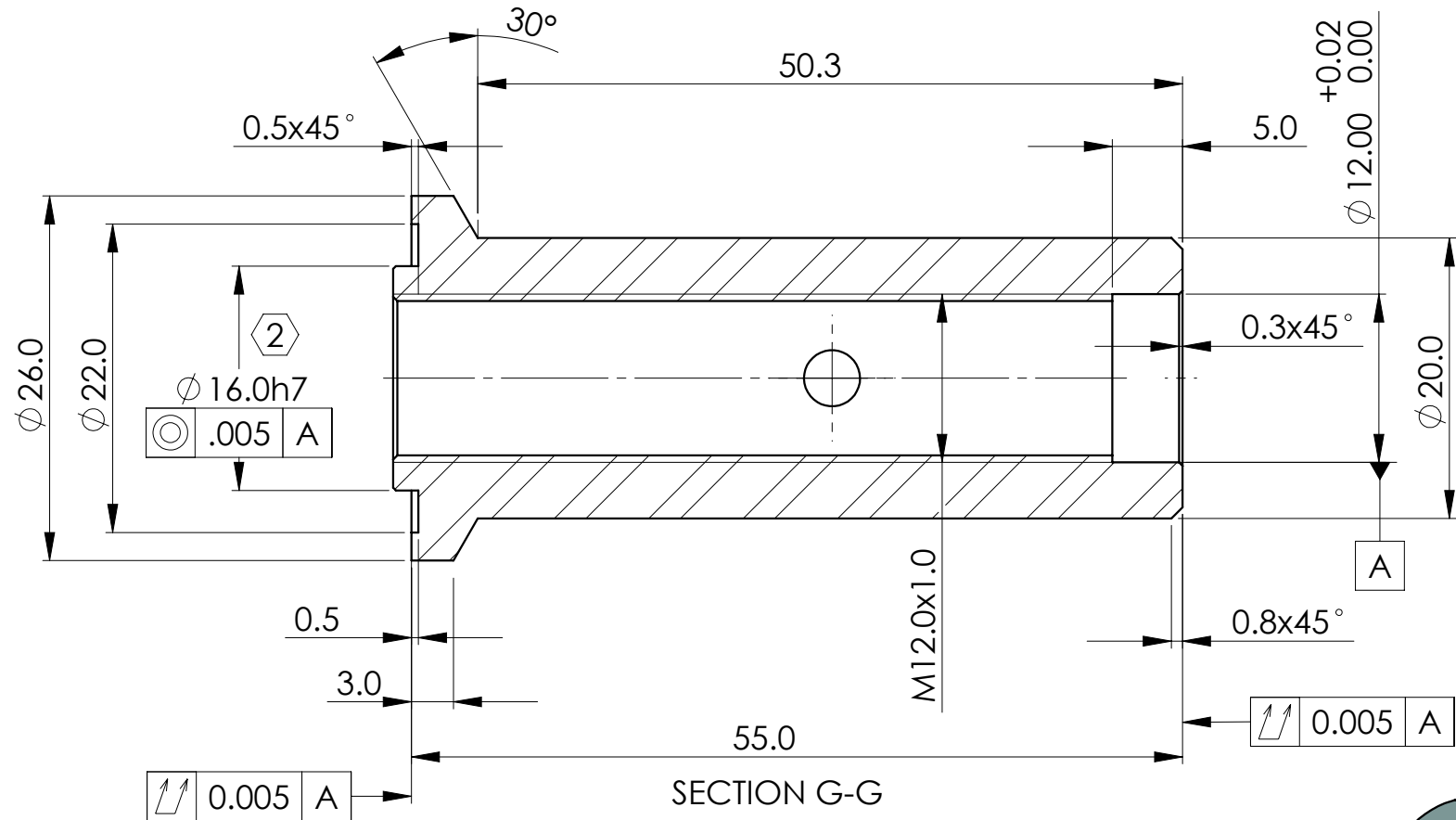
The information contained hereon is the sole property of CNCWINGS. This drawing and/or technical data is issued in confidence for information only and may not be reproduced or used to manufacture anything shown or referred to hereon without direct written permission from CNCWINGS to the user. This drawing and/or technical data is loaned for mutual assistance and is to be returned or destroyed after use. THIS DRAWING AND/OR TECHNICAL DATA IS THE PROPERTY OF CNCWINGS

NOTES:

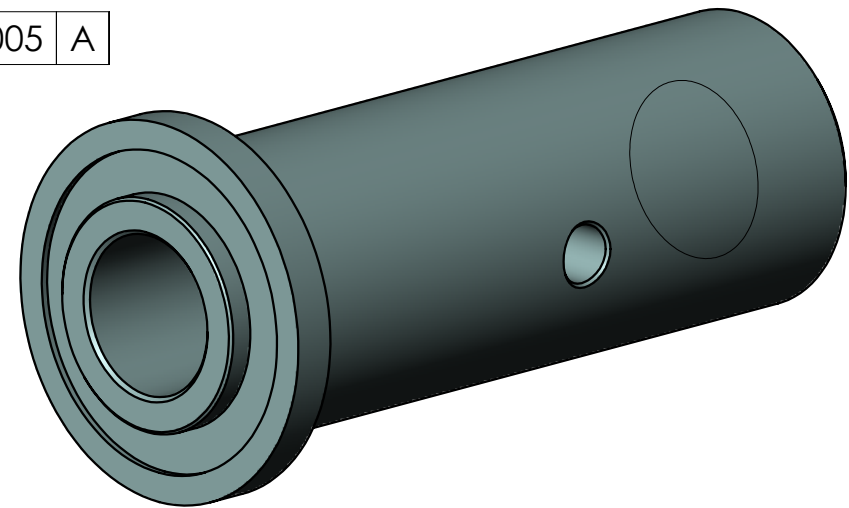
- UNIMAT MK.4, CAST IRON BED, CONVEX ROUND
- NEW ARBOR WAS SUPPLIED WITH THE CENTERING SPIGOT OVERSIZED, TO BE FINISHED ON OWNER'S LATHE
- SAW BLADE HOLE DIAMATER ϕ 16mm
- FOR ALTERNATE VERSION, SEE DWG UNI-012



SECTION H-H



SECTION G-G




REVISIONS			
REV.	DESCRIPTION	DATE	APPROVED
...

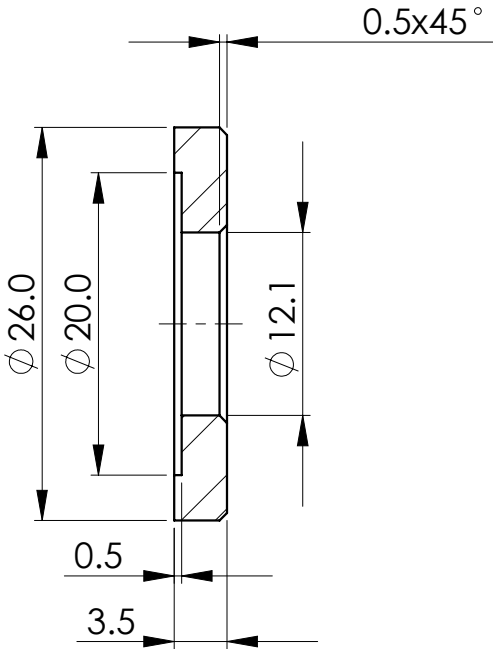
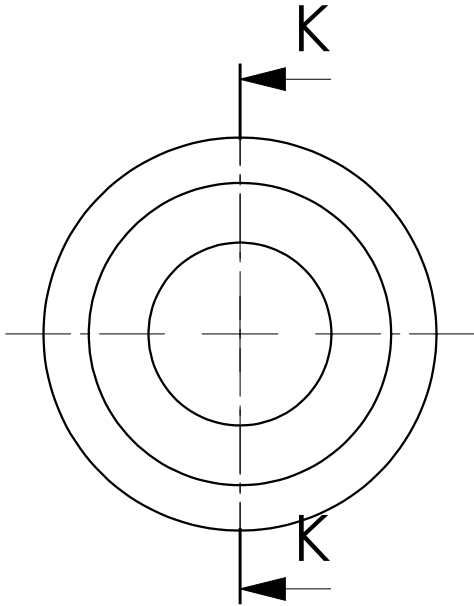
- NOTES:
- UNIMAT MK.4, CAST IRON BED, CONVEX ROUND
 - NEW ARBOR WAS SUPPLIED WITH THE CENTERING SPIGOT OVERSIZED, TO BE FINISHED ON OWNER'S LATHE TO SIZE

NOTICE:

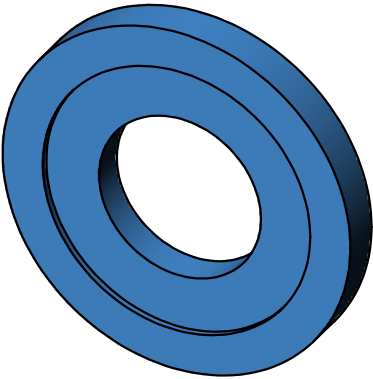
The information contained hereon is the sole property of CNCWINGS. This drawing and/or technical data is issued in confidence for information only and may not be reproduced or used to manufacture anything shown or referred to hereon without direct written permission from CNCWINGS to the user. This drawing and/or technical data is loaned for mutual assistance and is to be returned or destroyed after use. THIS DRAWING AND/OR TECHNICAL DATA IS THE PROPERTY OF CNCWINGS

MASS: 100.0 grams		PARTS LIST			
UNLESS OTHERWISE SPECIFIED DIMENSIONS ARE IN: MILLIMETERS		JOB NO: UNI		 WWW.CNCWINGS.COM	
TOLERANCES ARE: X.± .8 .X± .5 .XX± .1 .XXX± .05		DRAWN: R.GARGULAK	DATE:		
MATERIAL: ANSI 1020 STEEL		DESIGNED:	DATE:	TITLE: CIRCULAR SAW ARBOR BODY UNIMAT DB/SL	
FINISH: BLACK OXIDE		CHECKED:	DATE:	SIZE: FSCM No.	
SIMILAR TO: N/A		APPROVED:	DATE:	DRAWING NUMBER: KIT #1230/1-1	
APPLICATION: UNI-009		SCALE 2:1	RELEASE DATE: N/A	REV A	
				SHEET: 2 OF 4	

REVISIONS			
REV.	DESCRIPTION	DATE	APPROVED
...


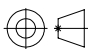


SECTION K-K

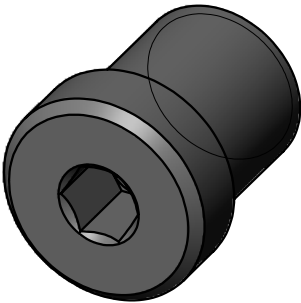
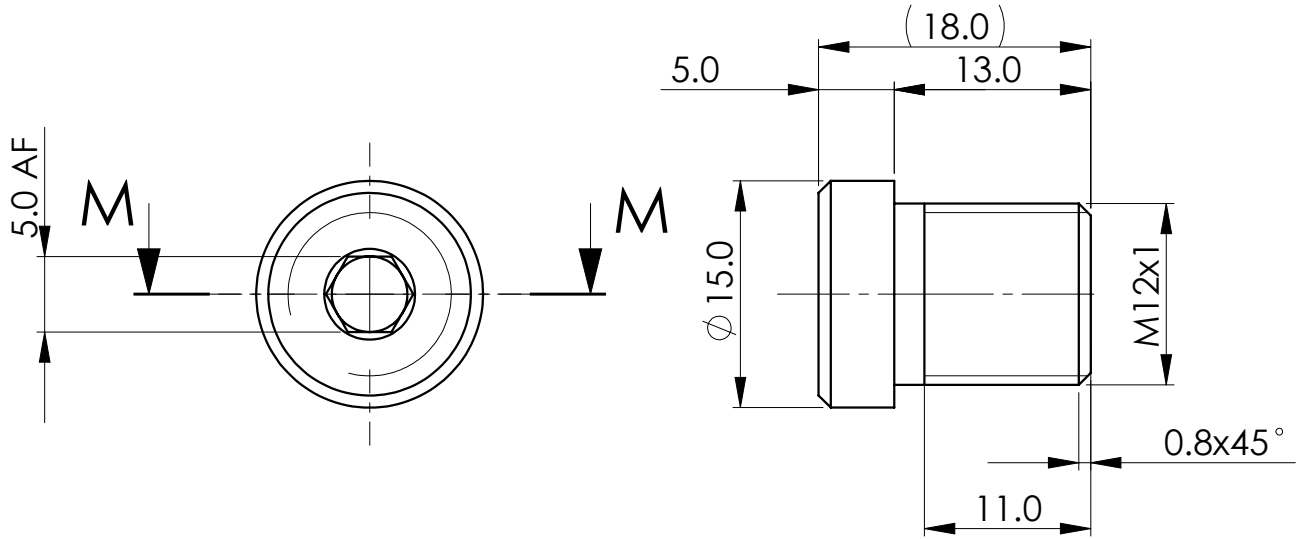


NOTES:
1. UNIMAT MK.4, CAST IRON BED, CONVEX ROUND

NOTICE:
The information contained hereon is the sole property of CNCWINGS. This drawing and/or technical data is issued in confidence for information only and may not be reproduced or used to manufacture anything shown or referred to hereon without direct written permission from CNCWINGS to the user. This drawing and/or technical data is loaned for mutual assistance and is to be returned or destroyed after use. THIS DRAWING AND/OR TECHNICAL DATA IS THE PROPERTY OF CNCWINGS

MASS: 10.6 grams		PARTS LIST					
UNLESS OTHERWISE SPECIFIED DIMENSIONS ARE IN: MILLIMETERS		JOB NO: UNI		 WWW.CNCWINGS.COM			
		DRAWN: R.GARGULAK					
TOLERANCES ARE: X.± .8 .X± .5 X°± 1° XX± .1 .XXX± .05		DESIGNED:		DATE:		TITLE: CIRCULAR SAW ARBOR WASHER UNIMAT DB/SL	
		CHECKED:		DATE:			
MATERIAL: ANSI 1020 STEEL		APPROVED:		DATE:		SIZE: FSCM No.	
FINISH: BLACK OXIDE				B		DRAWING NUMBER:	
SIMILAR TO: N/A				SCALE 2:1		RELEASE DATE: N/A	
APPLICATION: UNI-009				KIT #1230/1-2		REV A	
						SHEET: 3 OF 4	


REVISIONS			
REV.	DESCRIPTION	DATE	APPROVED
...



SECTION M-M

NOTICE:
The information contained hereon is the sole property of CNCWINGS. This drawing and/or technical data is issued in confidence for information only and may not be reproduced or used to manufacture anything shown or referred to hereon without direct written permission from CNCWINGS to the user. This drawing and/or technical data is loaned for mutual assistance and is to be returned or destroyed after use. THIS DRAWING AND/OR TECHNICAL DATA IS THE PROPERTY OF CNCWINGS

NOTES:
1. UNIMAT MK.4, CAST IRON BED, CONVEX ROUND

MASS: 15.4 grams		PARTS LIST			
UNLESS OTHERWISE SPECIFIED DIMENSIONS ARE IN: MILLIMETERS		JOB NO: UNI		 WWW.CNCWINGS.COM	
		DRAWN: R.GARGULAK	DATE:		
TOLERANCES ARE: X.± .8 .X± .5 .XX± .1 .XXX± .05		DESIGNED:	DATE:	TITLE: CIRCULAR SAW ARBOR SCREW UNIMAT DB/SL	
MATERIAL: ANSI 1020 STEEL		CHECKED:	DATE:		
FINISH: BLACK OXIDE		APPROVED:	DATE:	SIZE: B	FSCM No.
SIMILAR TO: N/A		APPLICATION: UNI-009		DRAWING NUMBER: KIT #1230/1-3	
				SCALE 2:1	RELEASE DATE: N/A
				SHEET: 4 OF 4	