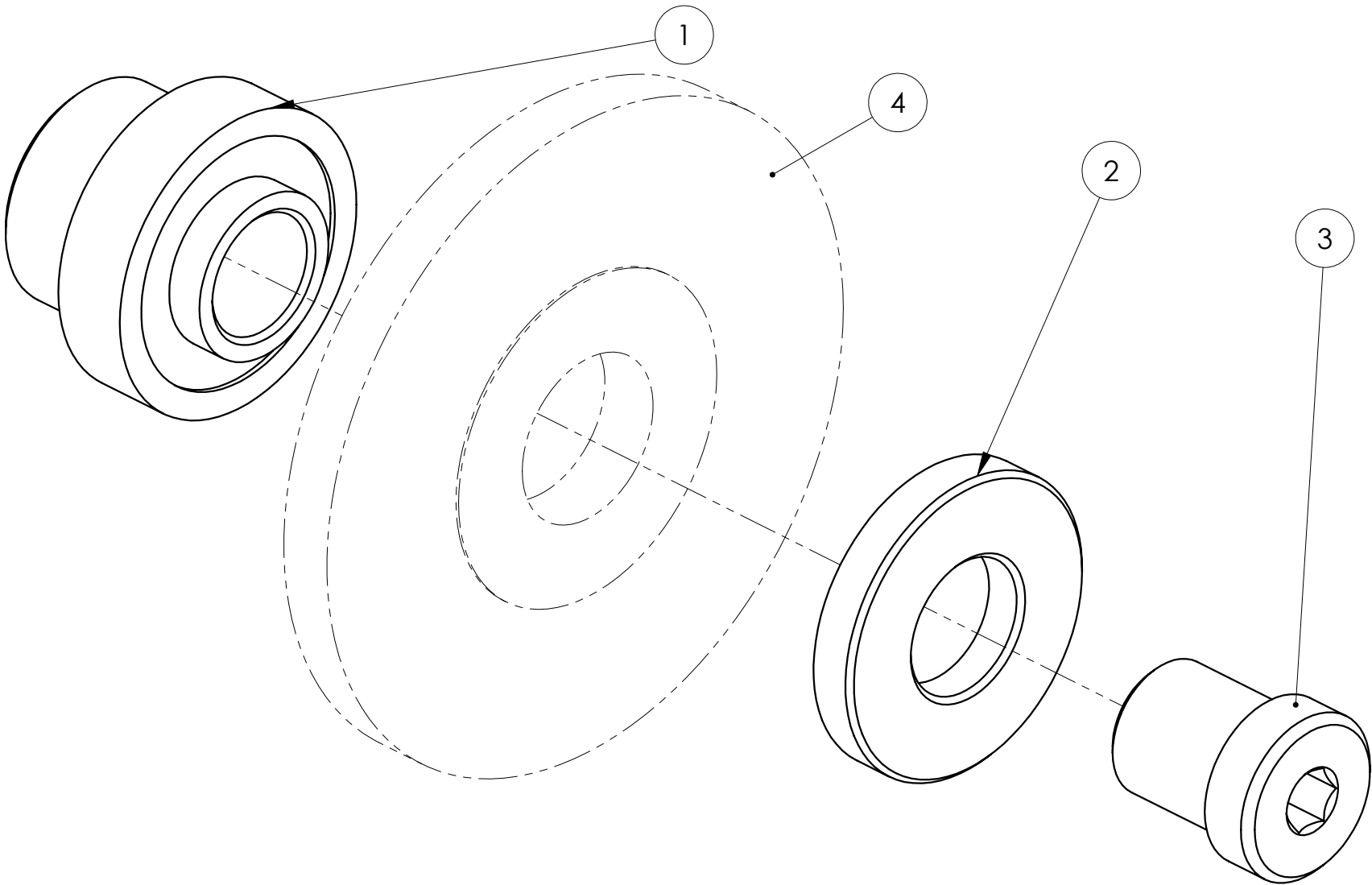


- NOTES:
- UNIMAT MK.4, CAST IRON BED, CONVEX ROUND
 - ARBOR DIAMETER ϕ 15mm
 - MAX. WHEEL WIDTH 6mm

NOTICE:

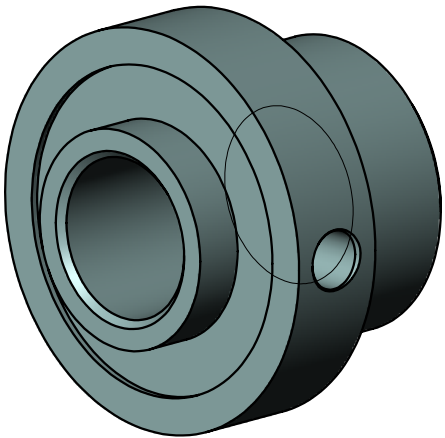
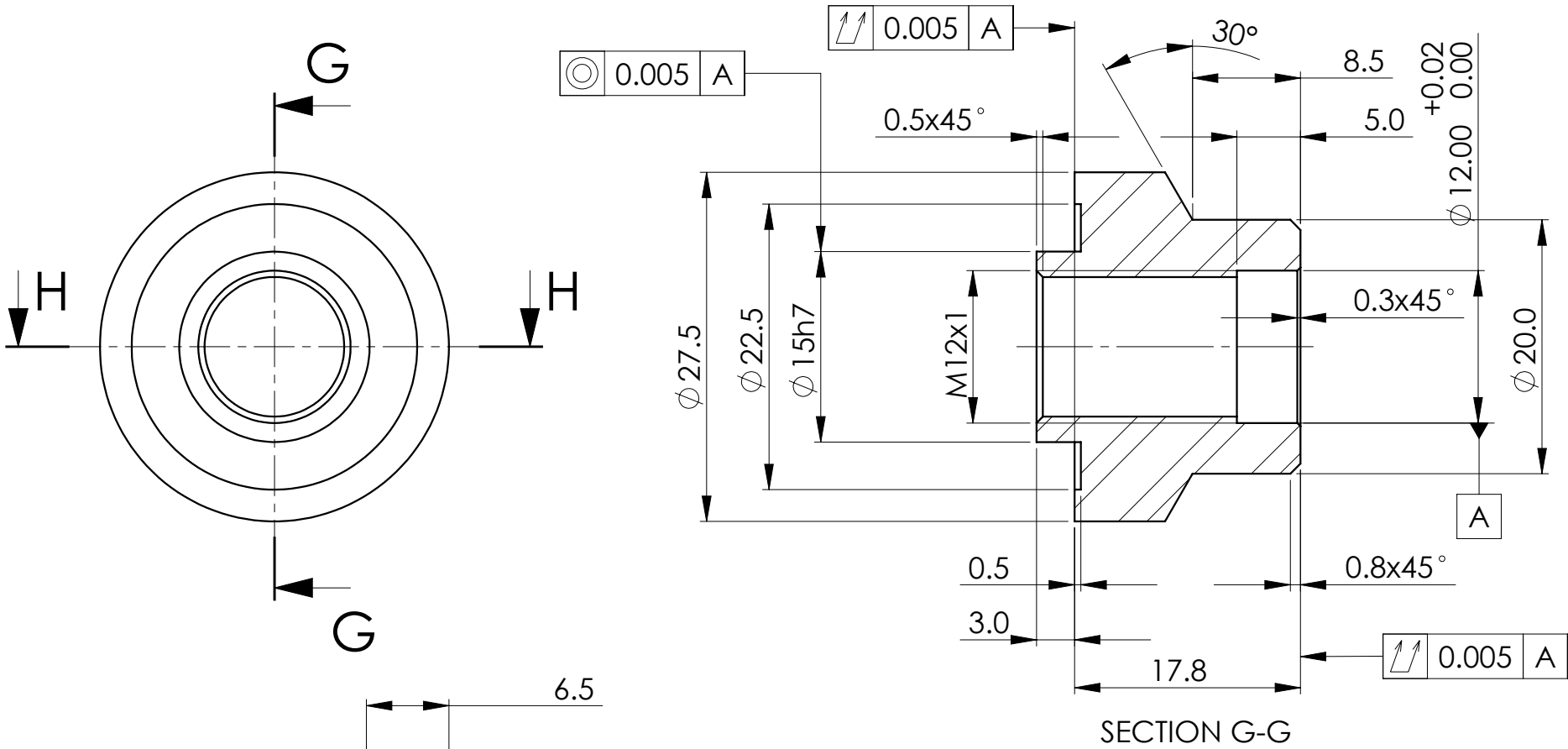
The information contained hereon is the sole property of CNCWINGS. This drawing and/or technical data is issued in confidence for information only and may not be reproduced or used to manufacture anything shown or referred to hereon without direct written permission from CNCWINGS to the user. This drawing and/or technical data is loaned for mutual assistance and is to be returned or destroyed after use. THIS DRAWING AND/OR TECHNICAL DATA IS THE PROPERTY OF CNCWINGS

REVISIONS			
REV.	DESCRIPTION	DATE	APPROVED
...




4		GRINDING WHEEL, 60mm x 15mm x 5mm	COMMERCIAL	1
3	KIT #62-3	GRINDING WHEEL ARBOR, SCREW, UNIMAT DB/SL	UNIMAT	1
2	KIT #62-2	GRINDING WHEEL ARBOR, WASHER, UNIMAT DB/SL	UNIMAT	1
1	KIT #62-1	GRINDING WHEEL ARBOR, BODY, UNIMAT DB/SL	UNIMAT	1
ITEM	PART NUMBER	DESCRIPTION	MANUFACTURER	QTY.
MASS: 109.3 grams		PARTS LIST		
UNLESS OTHERWISE SPECIFIED DIMENSIONS ARE IN: MILLIMETERS		JOB NO: UNI	WWW.CNCWINGS.COM	
TOLERANCES ARE: X \pm 0.8 X \pm 0.5 X \pm 1 $^\circ$.XX \pm 0.1 .XXX \pm 0.05		DRAWN: R.GARGULAK	DATE:	TITLE: GRINDING WHEEL ARBOR
MATERIAL: SEE NOTES BOM		DESIGNED:	DATE:	
FINISH: SEE NOTES		CHECKED:	DATE:	UNIMAT DB/SL
SIMILAR TO:		APPROVED:	DATE:	
APPLICATION: UNI-000		SIZE: B	FSCM No.	DRAWING NUMBER: UNI-008
		SCALE: 2:1	RELEASE DATE: N/A	REV: A
		SHEET: 1 OF 4		

REVISIONS			
REV.	DESCRIPTION	DATE	APPROVED
...

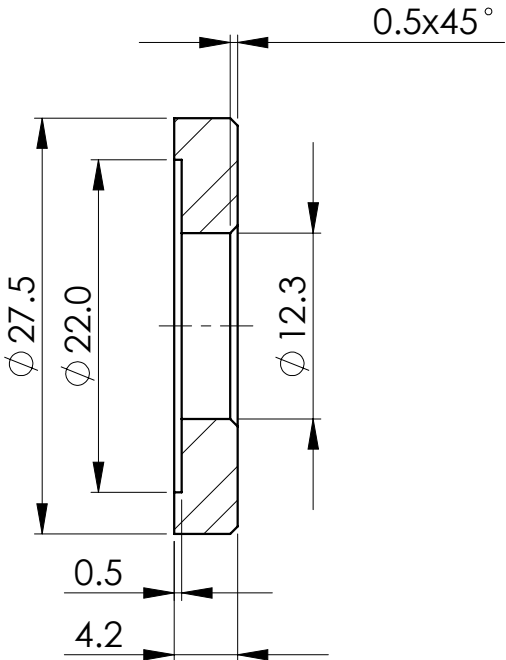
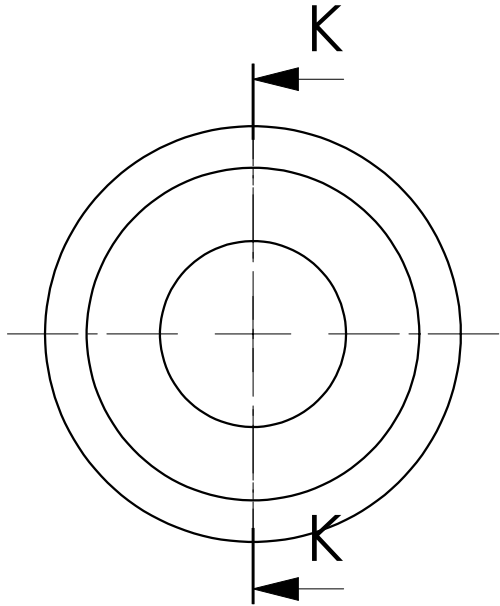


NOTES:
1. UNIMAT MK.4, CAST IRON BED, CONVEX ROUND

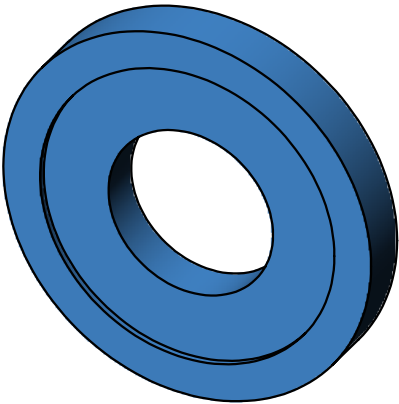
NOTICE:
The information contained hereon is the sole property of CNCWINGS. This drawing and/or technical data is issued in confidence for information only and may not be reproduced or used to manufacture anything shown or referred to hereon without direct written permission from CNCWINGS to the user. This drawing and/or technical data is loaned for mutual assistance and is to be returned or destroyed after use. THIS DRAWING AND/OR TECHNICAL DATA IS THE PROPERTY OF CNCWINGS

MASS: 48.1 grams		PARTS LIST			
UNLESS OTHERWISE SPECIFIED DIMENSIONS ARE IN: MILLIMETERS		JOB NO: UNI	 WWW.CNCWINGS.COM		
TOLERANCES ARE: X.± .8 .X± .5 .XX± .1 .XXX± .05		DRAWN: R.GARGULAK			
MATERIAL: ANSI 1020 STEEL		DESIGNED:	TITLE: GRINDING WHEEL ARBOR BODY UNIMAT DB/SL		
FINISH: BLACK OXIDE		CHECKED:	SIZE: FSCM No. DRAWING NUMBER: REV		
SIMILAR TO: N/A		APPROVED:	B KIT #62-1 0		
		APPLICATION: UNI-008	SCALE 2:1 RELEASE DATE: N/A SHEET: 2 OF 4		

REVISIONS			
REV.	DESCRIPTION	DATE	APPROVED
...


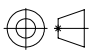


SECTION K-K

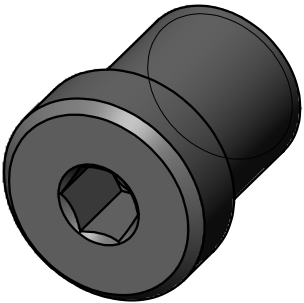
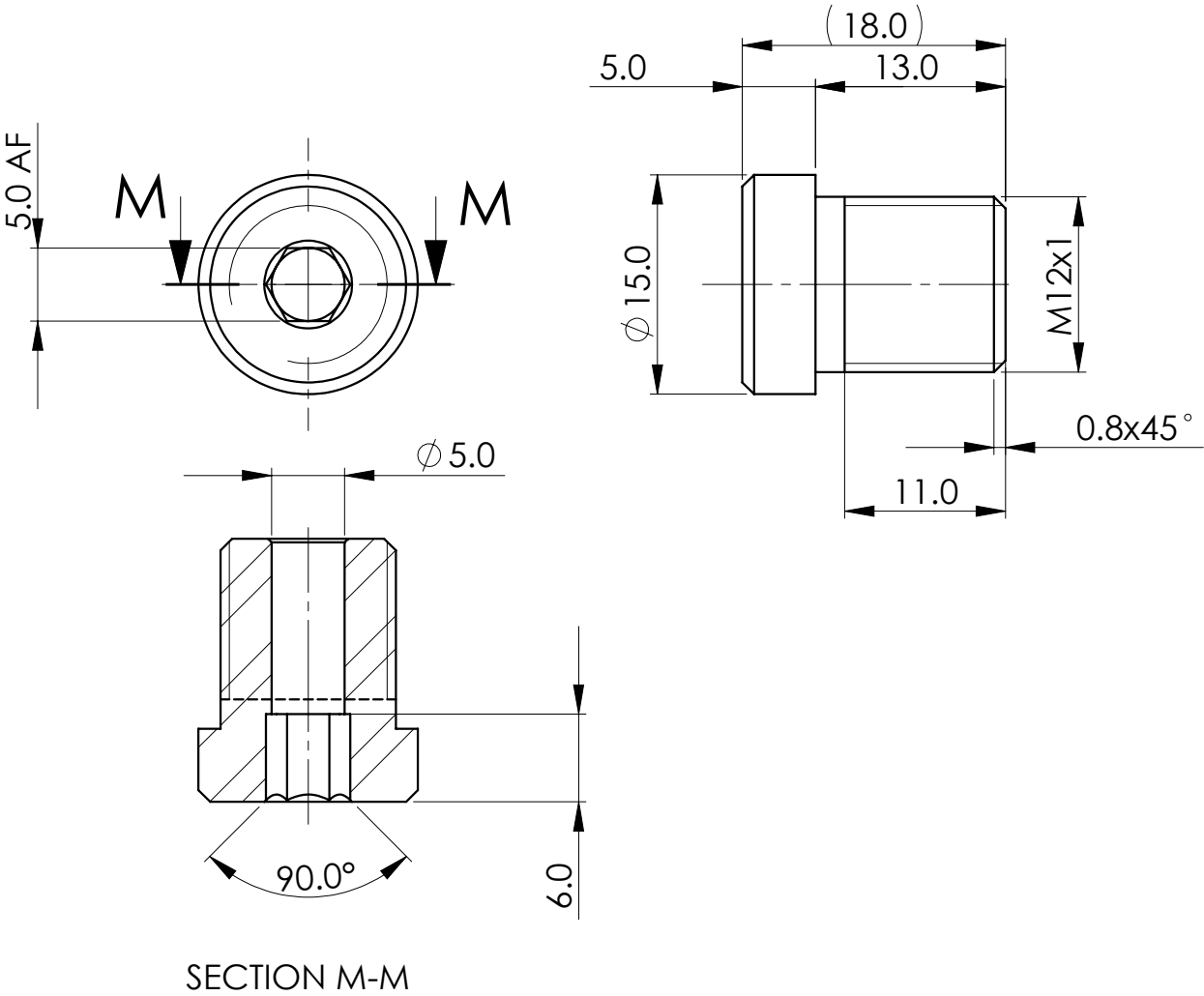


NOTES:
1. UNIMAT MK.4, CAST IRON BED, CONVEX ROUND

NOTICE:
The information contained hereon is the sole property of CNCWINGS. This drawing and/or technical data is issued in confidence for information only and may not be reproduced or used to manufacture anything shown or referred to hereon without direct written permission from CNCWINGS to the user. This drawing and/or technical data is loaned for mutual assistance and is to be returned or destroyed after use. THIS DRAWING AND/OR TECHNICAL DATA IS THE PROPERTY OF CNCWINGS


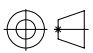
MASS: 14.6 grams		PARTS LIST					
UNLESS OTHERWISE SPECIFIED DIMENSIONS ARE IN: MILLIMETERS		JOB NO: UNI		 WWW.CNCWINGS.COM			
		DRAWN: R.GARGULAK	DATE:				
TOLERANCES ARE: X.± .8 .X± .5 .X°± 1° .XX± .1 .XXX± .05		DESIGNED:	DATE:	TITLE: GRINDING WHEEL ARBOR WASHER UNIMAT DB/SL			
		CHECKED:	DATE:				
MATERIAL: ANSI 1020 STEEL		APPROVED:	DATE:	SIZE: B	FSCM No.	DRAWING NUMBER: KIT #62-2	REV A
FINISH: BLACK OXIDE		APPLICATION: UNI-008		SCALE 2:1	RELEASE DATE: N/A	SHEET: 3 OF 4	
SIMILAR TO: N/A							

REVISIONS			
REV.	DESCRIPTION	DATE	APPROVED
...



NOTES:
1. UNIMAT MK.4, CAST IRON BED, CONVEX ROUND

NOTICE:
The information contained hereon is the sole property of CNCWINGS. This drawing and/or technical data is issued in confidence for information only and may not be reproduced or used to manufacture anything shown or referred to hereon without direct written permission from CNCWINGS to the user. This drawing and/or technical data is loaned for mutual assistance and is to be returned or destroyed after use. THIS DRAWING AND/OR TECHNICAL DATA IS THE PROPERTY OF CNCWINGS

MASS: 15.4 grams		PARTS LIST							
UNLESS OTHERWISE SPECIFIED DIMENSIONS ARE IN: MILLIMETERS		JOB NO: UNI		<div></div> <div>WWW.CNCWINGS.COM</div>					
		DRAWN: R.GARGULAK	DATE:						
TOLERANCES ARE: X.± .8 .X± .5 .X°± 1° .XX± .1 .XXX± .05		DESIGNED:	DATE:	TITLE: GRINDING WHEEL ARBOR SCREW UNIMAT DB/SL					
		CHECKED:	DATE:						
MATERIAL: ANSI 1020 STEEL		APPROVED:	DATE:	SIZE: B	FSCM No.		DRAWING NUMBER: KIT #62-3		REV 0
FINISH: BLACK OXIDE		APPLICATION: UNI-008		SCALE 2:1	RELEASE DATE:		N/A		SHEET: 4 OF 4
SIMILAR TO: N/A									