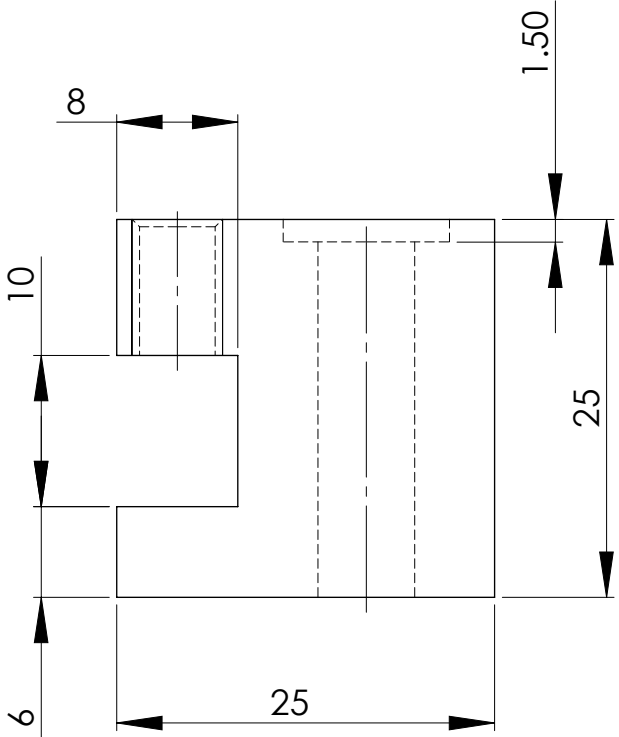
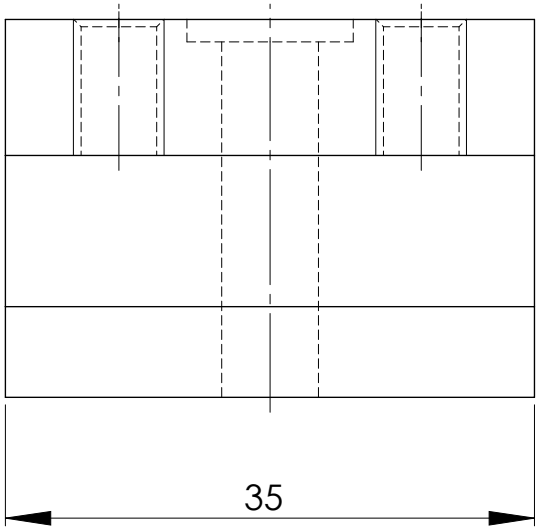
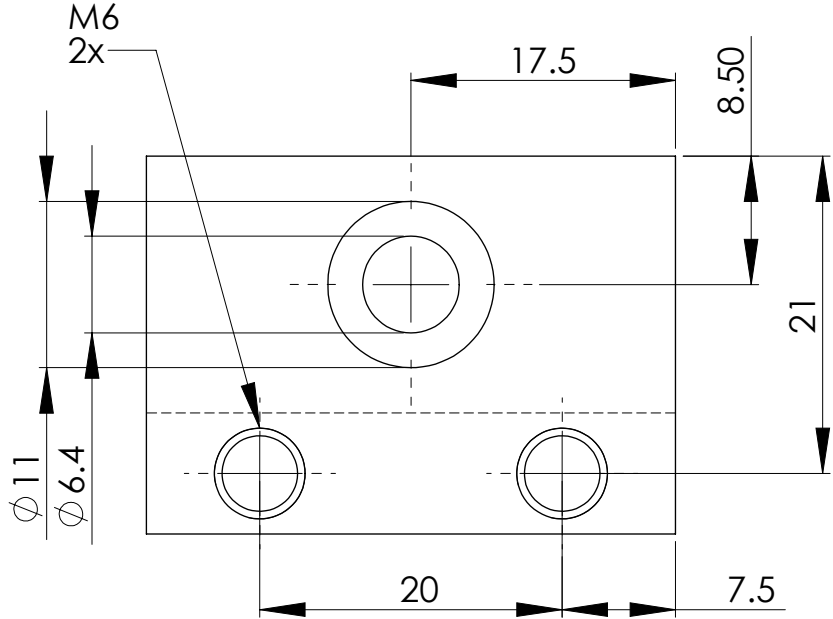
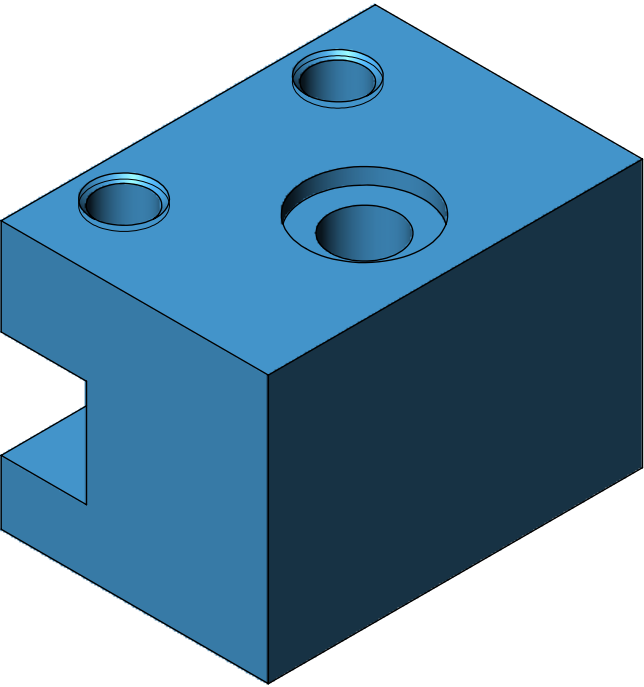


REVISIONS			
REV.	DESCRIPTION	DATE	APPROVED
...



NOTES:
1. REMOVE ALL BURS AND SHARP EDGES

NOTICE:
The information contained hereon is the sole property of CNCWINGS. This drawing and/or technical data is issued in confidence for information only and may not be reproduced or used to manufacture anything shown or referred to hereon without direct written permission from CNCWINGS to the user. This drawing and/or technical data is loaned for mutual assistance and is to be returned or destroyed after use. THIS DRAWING AND/OR TECHNICAL DATA IS THE PROPERTY OF CNCWINGS

ITEM NO.	PART OR IDENTIFYING NO.	DESCRIPTION		MANUFACTURER	QTY REQ'D
MASS: 139.6 grams		PARTS LIST			
UNLESS OTHERWISE SPECIFIED DIMENSIONS ARE IN: MILLIMETERS		JOB NO: UNI	WWW.CNCWINGS.COM		
TOLERANCES ARE: X ± .5 X ± .1 X° ± 1° .XX ± .05 XXX ± .005		DRAWN: R.GARGULAK	DATE:	TITLE: TOOL POST STANDARD UNIMAT DB/SL	
MATERIAL: CARBON STEEL		DESIGNED:	DATE:	REV A	
FINISH: BLACK OXIDE		CHECKED:	DATE:	DRAWING NUMBER: UNI-007	
SIMILAR TO: N/A		APPROVED:	DATE:	SIZE: B	REV A
		APPLICATION: UNI-000	DATE:	SCALE 2:1	REV A
				RELEASE DATE: N/A	SHEET: 1 OF 1