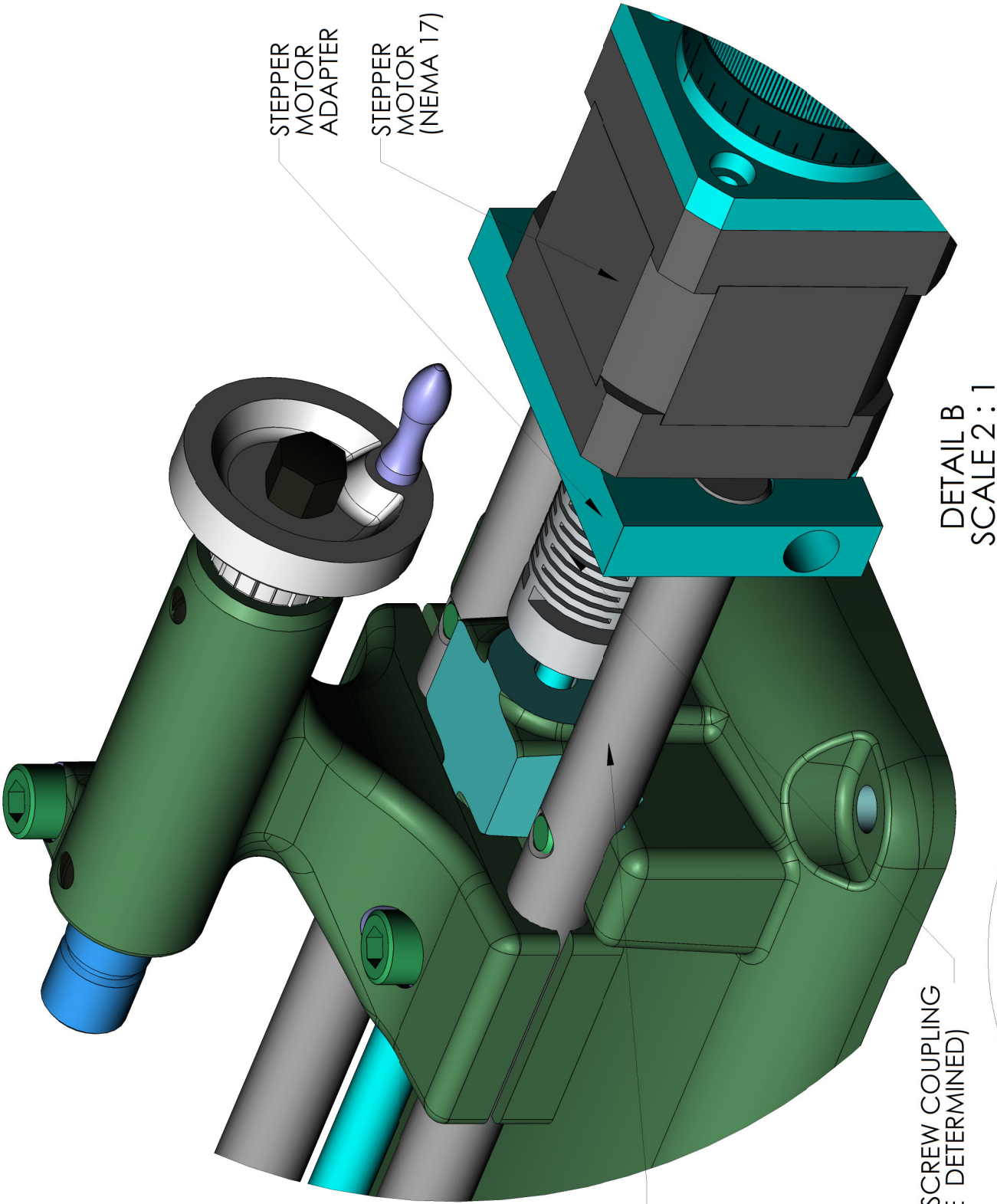


STEPPER MOTOR ADAPTER
DETAIL



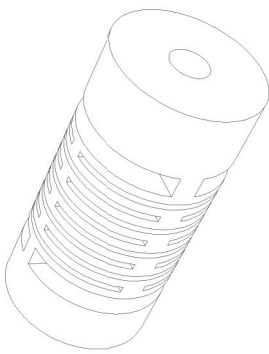
STEPPER
MOTOR
ADAPTER

STEPPER
MOTOR
(NEMA 17)

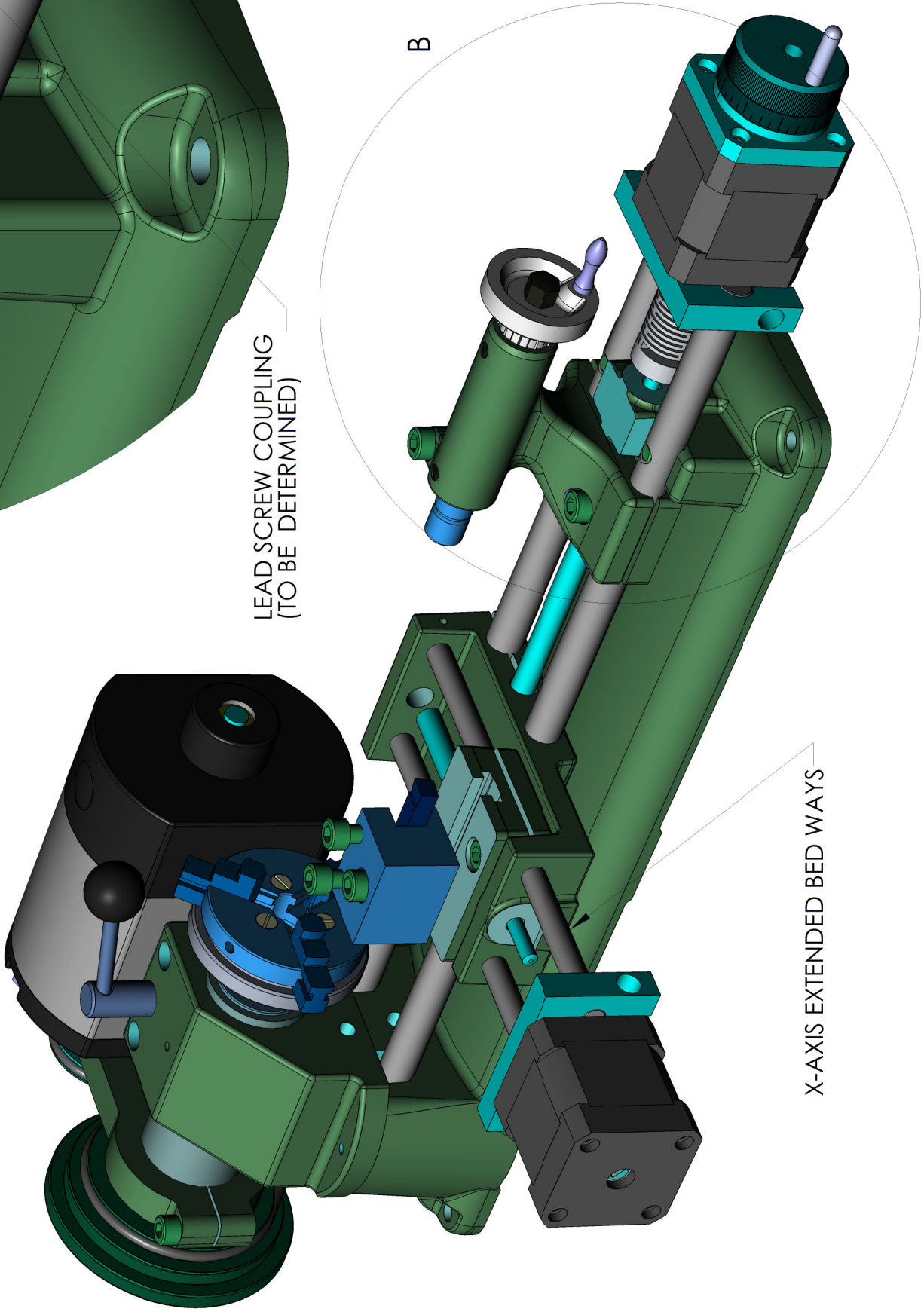
DETAIL B
SCALE 2 : 1

Z-AXIS EXTENDED BED WAYS

LEAD SCREW COUPLING
(TO BE DETERMINED)



LEAD SCREW COUPLING
(CAN BE SUBSTITUTED WITH
SIMPLE HEX ROD, CUT TO LENGTH
DRILL AND TAP ONE END M5,
PLAIN HOLE TO SUIT STEPPER SHAFT,
SECURED WITH SET SCREW)



X-AXIS EXTENDED BED WAYS