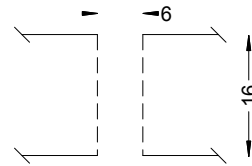
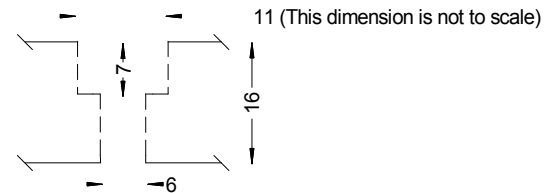


(19) 5 mm holes tapped to 6 mm.



(4) holes, any two to be used to mount to the carriage with 6 x 15 mm cap screws and t-nuts.



# Unimat Tooling Plate

All measurements in millimeters.  
 Make from 5/8" 6061 Aluminum plate.  
 A. J. Corazza - 12/10/2009