

DRY-DOCK / MOBILE DRY-DOCK

cloaking device and could it cloak while it was opened? The Tal' Shear acquired an Eagles Nest to test the idea. It worked. Some had wondered what was the point behind the idea? Then the Tal' Shear wondered, could a cloaked vessel go inside a cloaked dry-dock? Again the experiment was a success. Now the Tal' Shear had a way of attacking Federation or Klingons posts inside their area and have any ships fixed while inside the enemy territory. It was a bold idea, but it could be very effective in gathering intelligence, to the famous hit and run the Romulans are noted for.

In 2260 a small side order from the Tal' Shear was given to the contractor to build a small number of the mobile Dry-docks to be shipped to a special location. There they were fitted with a cloaking device and an ECM system. The military along with the Tal' Shear had gotten together to set up a plan for a reconnaissance and targets of opportunity inside Federation space. It was a bold plan and that if any of the ships were ever to be caught; the Federation could call it an act of war. In 2261 a few dry-docks were completed a few more tests were preformed. They not only met or exceeded the experiments, but any objectors were silenced and the plan was put forth. As other matters came up the plan was put on hold. Time after time something else came up that was more important. Through out the whole time there were still those who said the mobile dry-docks were not needed. In 2266 the Tal' Shear and the military had sent in one V-8 Bird of Prey to test a new version of a cloaking device and to test the Federations defenses. The plan was a failure but also a success. They learned what the Federation defenses were like but they lost the ship. Afterwards some in the military then pointed out to the dissenters that the mobile dry-dock would have been of useful and would have worked. As time had passed, the idea of an incursion into Federation space was put on the shelf. In 2268 when a Federation ship crossed into Romulan space and it was later found out it was on a mission to steal a new version of a cloaking device the idea of an incursion into Federation space seemed like a good idea. The plan was brought forth and was studied.

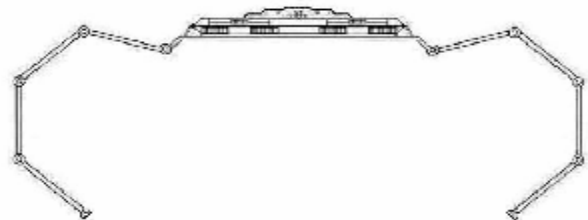
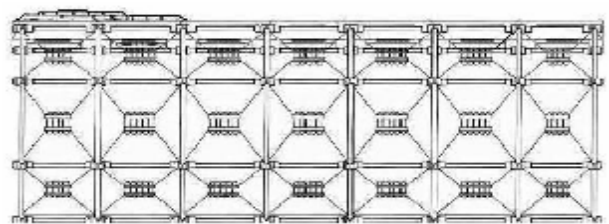
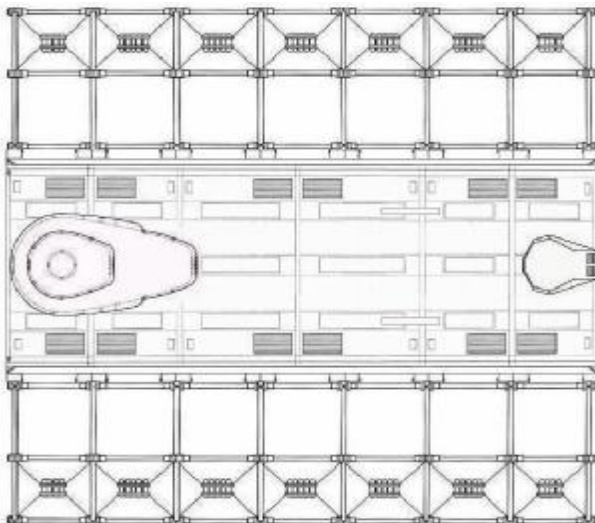
In 2269 the plan was brought forth to the military and it was studied by the best of the Romulan military tacticians. After the military looked it over it was time to execute it. In the middle of 2269 Starbase 23 was monitoring 12 T-10 Bright One Destroyers heading for the Klingon border; it had looked like they were on their way to a little raiding. What the base did not see were the 5 Eagles Nest mobile dry-docks that were right behind them cloaked. When the Bright Ones cloaked they lost track. Once the Romulans knew they were not being tracked they turned and headed for Federation space. There once they crossed the boarder they split up into their respected routes. The Dry-docks that were not being monitored headed for their designated locations. The mission was going on with success. In fact one of the Bright Ones got as close as the Alpha Centari system before the Captain decided it was close enough and he did not want to risk being detected. As the mission was proceeding as planned the dry-docks were in place. 3 of the T-10s saw a target of opportunity and went for it. It was a lone convoy carrying a small shipment of supplies to a colony. The ship was able to defend it self but it was destroyed in the end. 2 of the T-10s were damaged and needed repairs. They went to one of the designated locations where there was a dry-dock, that was cloaked and the ship was in the process of being repaired. The other 10 ships went and collected data on a lot of Starfleet ships and some outposts were able to be knocked out. When the news of the outposts were being knocked out Starfleet started to put the area on alert. The mission had to end quickly for the Romulans knew it was a matter of time before they were discovered. The T-10s and the dry-docks started to head back to Romulan space. 4 of the T-10s headed for one of the outposts on the boarder to help get the rest back. The ruse worked and they all returned, out of the 4 T-10s 1 was destroyed, 1 was heavily damaged and had to be destroyed, 1 was damaged but needed to be repaired. The last one was ok but a little damage. Once the damaged one was in Romulan space it was too far away from an F-2. Though an Eagles Nest was near by to help out and get the ship under operation again. As all the ships got back the mission was considered a success. They were able to gather more data then any deep space scan could have ever accomplished. The Military was pleased and the Ta' Shear was very happy. Later on when the Military was planning on doing something like it again, they had decided not to do it right away. They had deemed it to be too risky.

After the word got back the Starfleet intelligence on what had happened, they were amazed they were able to penetrate so far. Plans were in the works to try to stop it from happening again. Then in 2285 the Romulans had decided to send in 3 V-7 Whitewinds and 2 Eagles Nests to gather more data. The mission was a failure, due to a malfunctioning cloaking device. One of the two Eagles Nest was spotted, and called for help, when no help came the dock was destroyed completely. The 3 V-7s were able to get back but the other dry-dock was not so lucky, it too was destroyed.

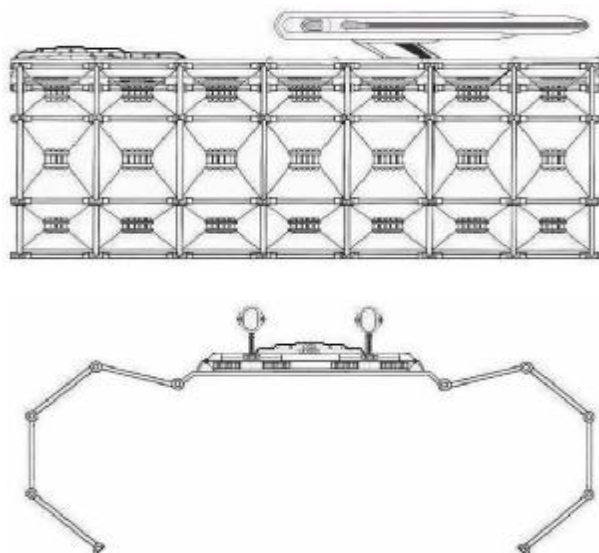
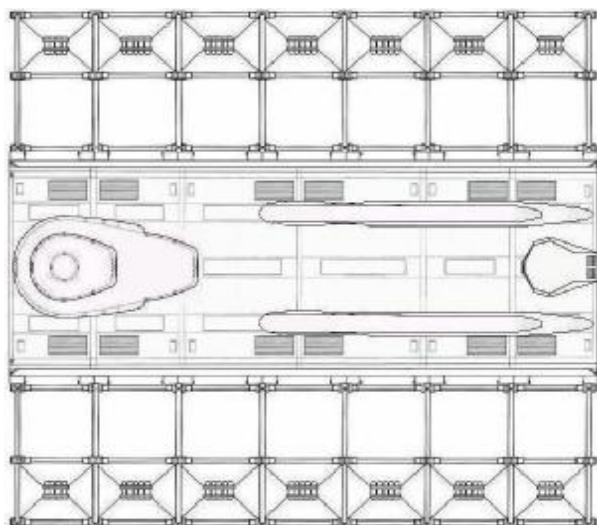
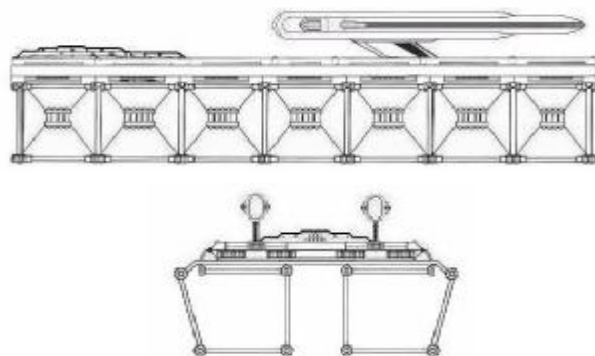
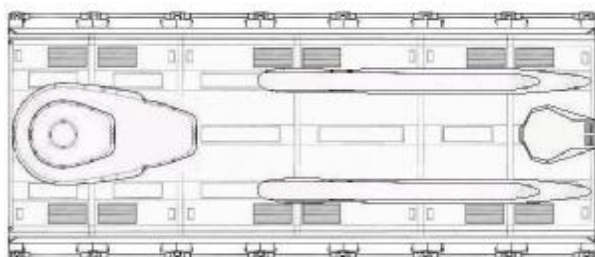
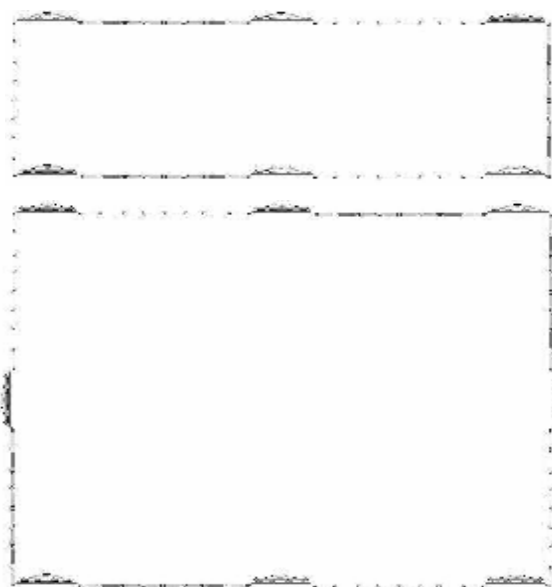
The Romulans have lost a few of the standard dry-docks to some accidents. Later as one of the newer ships where being constructed there was a malfunction in one of the cranes, this caused a deck plate to come loose and damage one of the struts which caused more damage to the ship which caused a breach in the antimatter pods. The good news was the pods were not full at the time but it did cause an explosion in the dry-dock. The explosion had killed hundreds of workers. It was later found there was a defective part in the crane power system. There have been a few accidents, but the most disastrous was when an out of control starship a V-8 veered into a V-30. Both ships were lost and three dry-docks were destroyed. It was later found that a computer malfunction cause the veer in course. The production rate of the docks is 20 per year. Conversion between a standard dock and a mobile takes 3 hours. The docks are very modular and upgrading can last the sock well into the next century.

3 View:

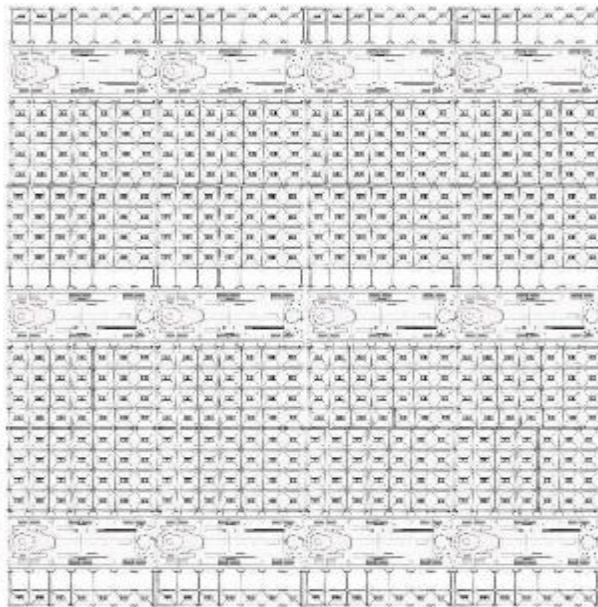
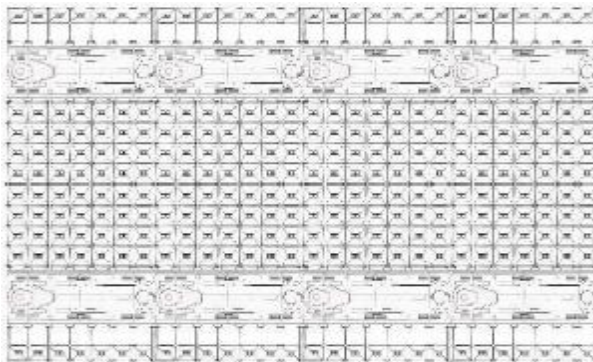
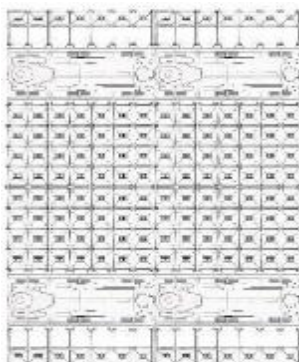
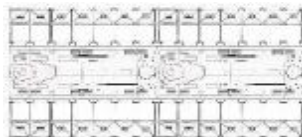
Standard Dry-dock



DRY-DOCK / MOBILE DRY-DOCK

Mobile Dry-dock (Open)Mobile Dry-dock (Folded)Other Configurations

DRY-DOCK / MOBLE DRY-DOCK

Other Configurations Continued

EAGLES NEST CLASS is a copyright of Christopher Cornelius. Schematics provided by christ1@cablerocket.com
Star Trek is a registered trademark of Paramount Pictures Corporation.