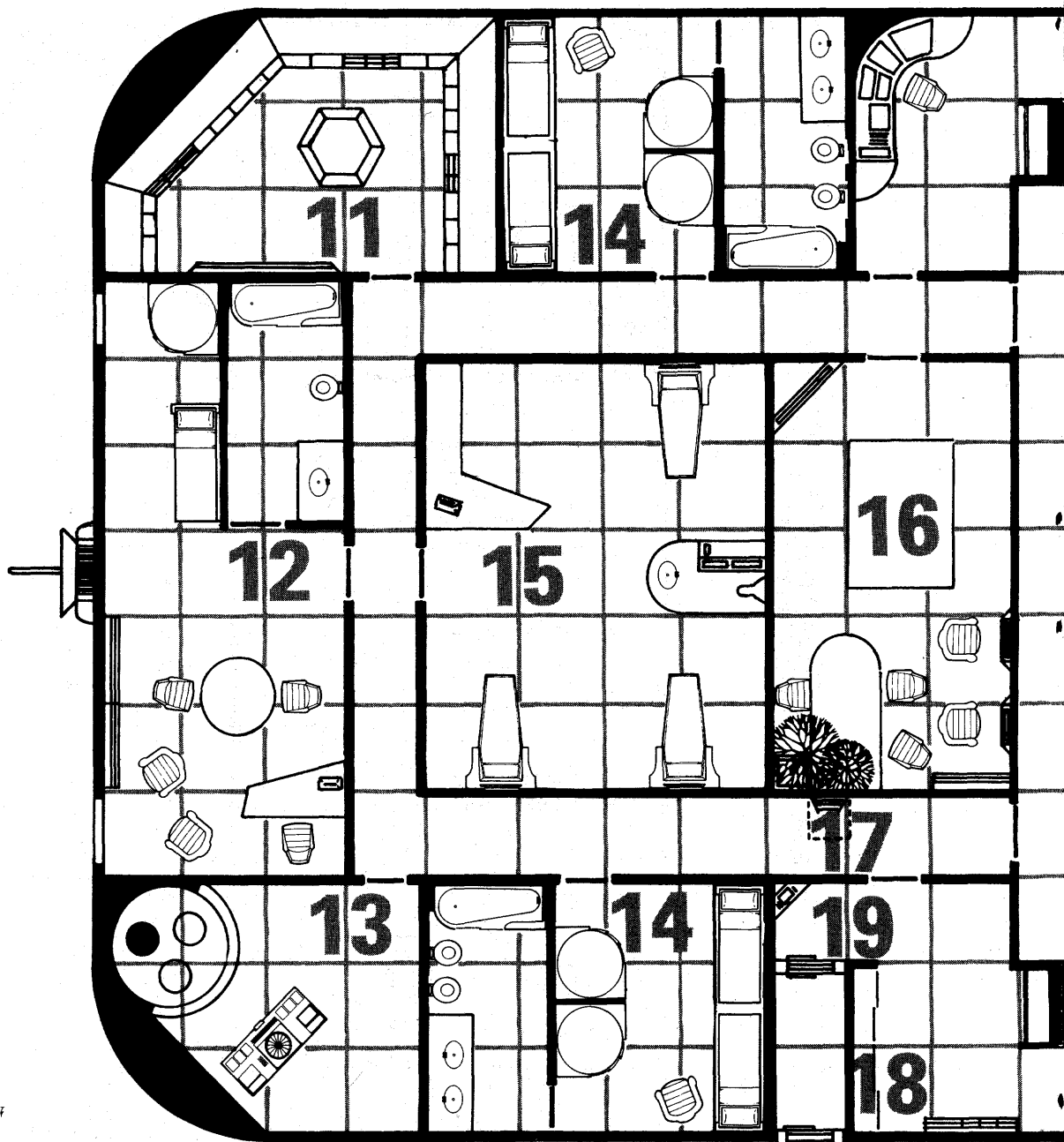


Each square on this map is 1.5 meters across.

Starboard

Bow



### Map Key

- 11. Ship's stores and armory
- 12. Captain's quarters
- 13. Transporter room
- 14. Crew quarters (2)
- 15. Sick bay
- 16. Recreation room
- 17. Ladder up
- 18. EVA stores
- 19. Airlock
- 20. Stairway up (2)
- 21. Impulse drive engineering controls
- 22. Cargo bay
- 23. Warp drive engineering controls

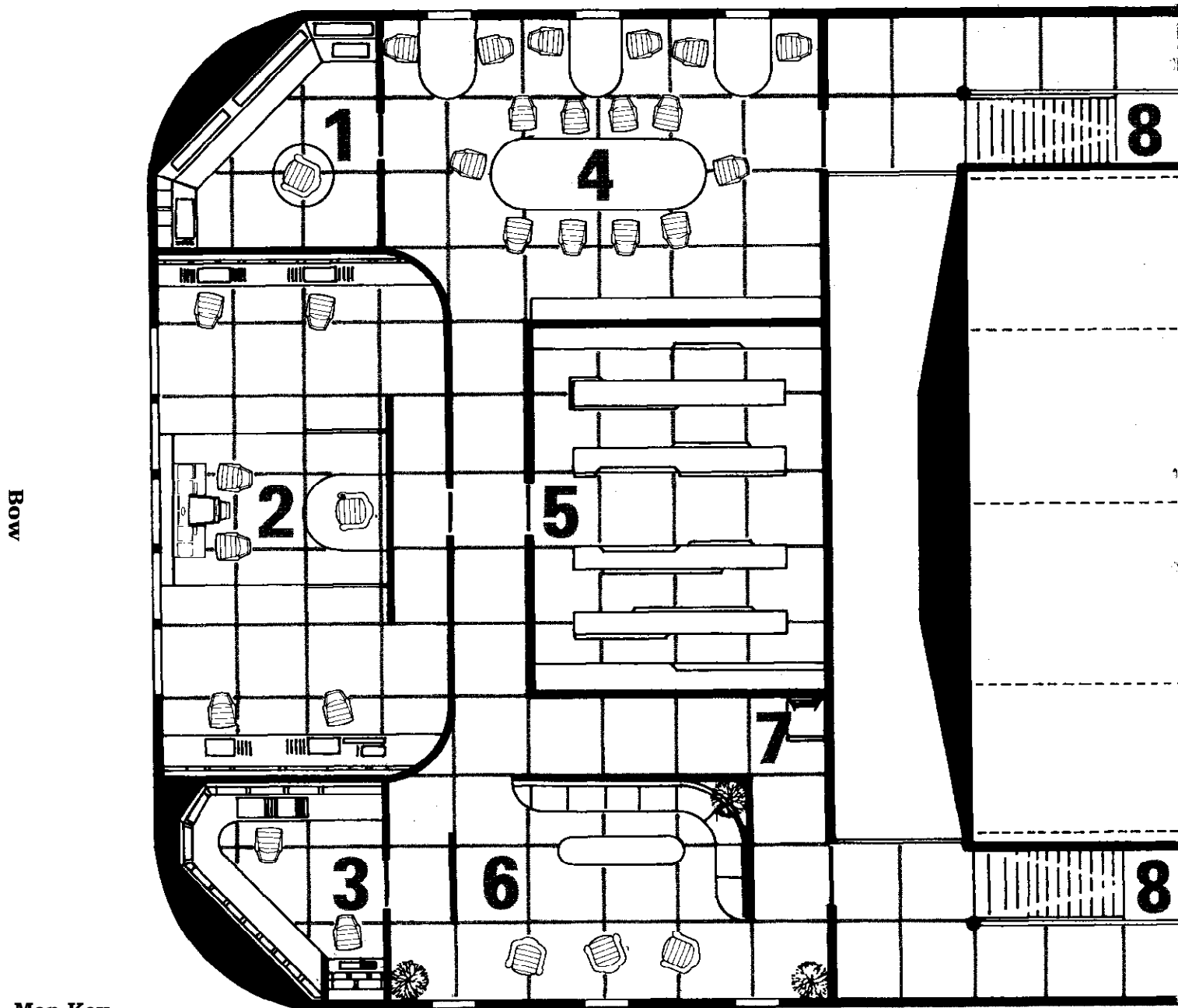
Port

LOWER

# Deck Plans for the GINNY'S DELIGHT

©1985 by Dale L. Kemper

An ARES™ Section Special



## Map Key

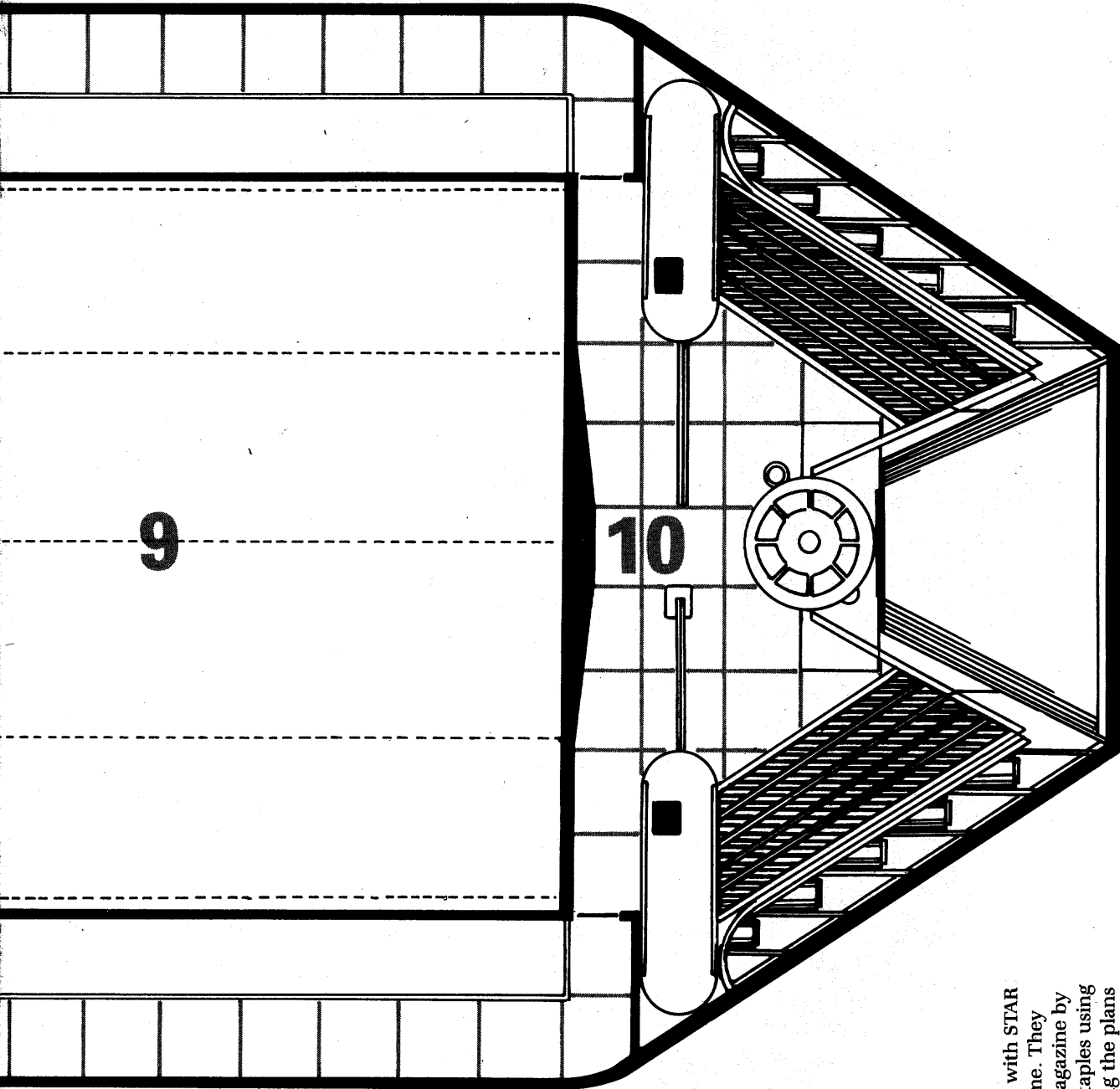
1. Sensors
2. Bridge
3. Sensors
4. Dining room
5. Computer room
6. Lounge
7. Ladder down
8. Stairway down (2)
9. Upper half of cargo bay (no floor)
10. Impulse engine

Port

UPPER

Each square on this map is 1.5 meters across.

Starboard

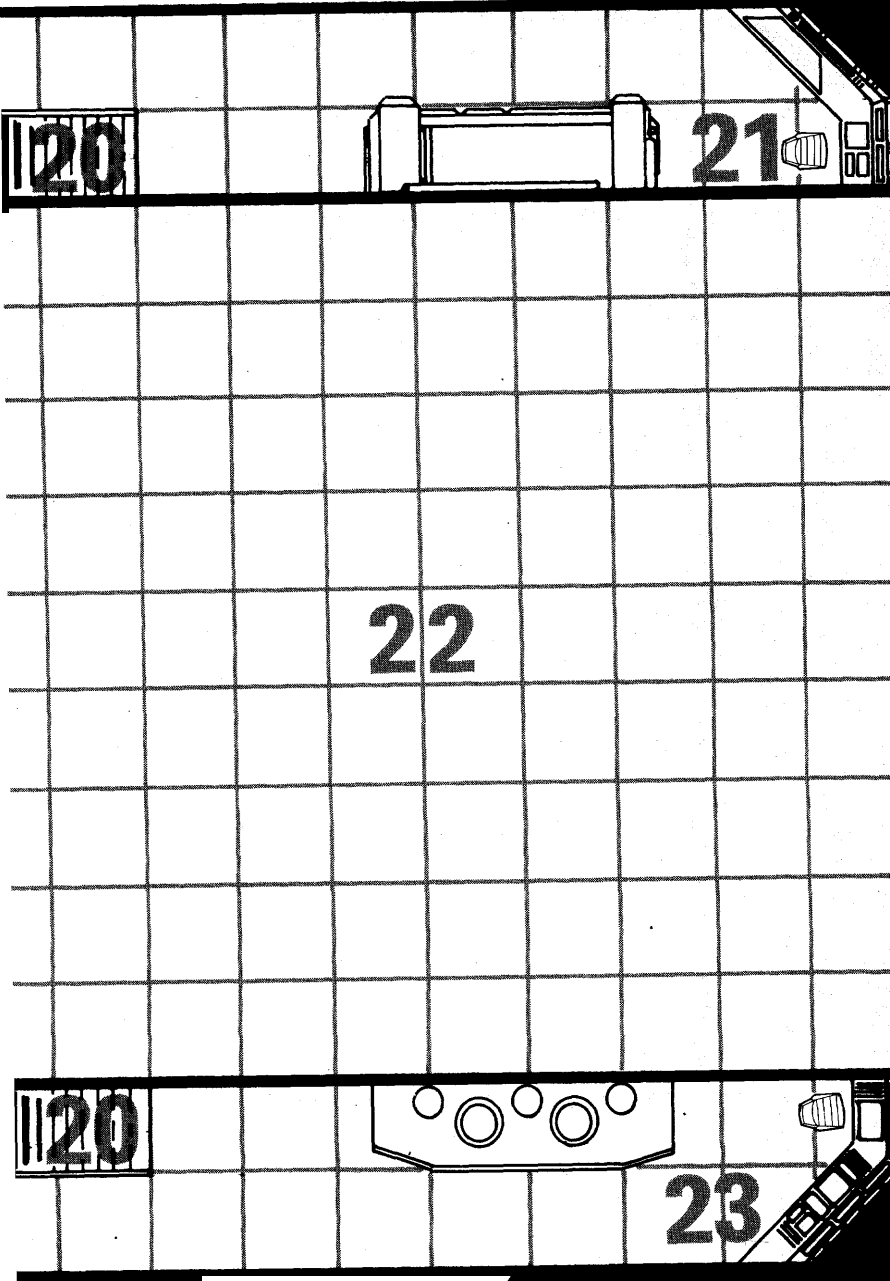


Stern

DECK

These deck plans are for use with STAR TREK®: The Role-Playing Game. They may be removed from the magazine by carefully bending back the staples using a dull butter knife and pulling the plans free. A description of the Ginny's Delight may be found in the ARES™ Section of this issue (DRAGON® Magazine #96).

ARES and DRAGON are trademarks of TSR, Inc. STAR TREK is a trademark of Paramount Pictures Corporation.



Stern

DECK