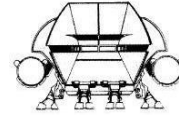
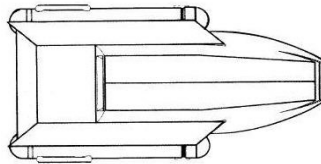
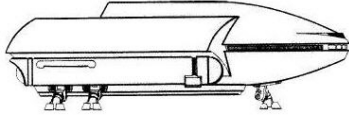




## Tavares Class II Freighter



### Construction Data

Model Numbers	Mk I	Mk II	Type Q
<i>Date Entering Service</i>	2251 (1/94)	2257 (2/00)	2285 (2/22)
<i>Number Constructed</i>	1416	5543	9
<b>Hull Data</b>			
<i>Superstructure Points</i>	3	3	5
<i>Damage Chart</i>	C	C	C
<i>Size</i>			
Length	65.5 m	65.5 m	65.5 m
Width	32 m	32 m	32 m
Height	18 m	18 m	18 m
Weight	10,610 mt	13,910 mt	14,360 mt
<b>Cargo</b>			
Cargo Units	800 SCU	900 SCU	510 SCU
Cargo Capacity	40,000 mt	45,000 mt	25,500 mt
Landing Capability	Yes	Yes	Yes
<b>Equipment Data</b>			
<i>Control Computer Type</i>	L-14	L-14	L-14
<b>Transporters</b>			
standard 6-person	1	1	1
cargo, small	2	2	2
cargo, large	1	1	1
<b>Other Data</b>			
<i>Crew</i>	4	4	4
<i>Passengers</i>	4	4	4
<i>Shuttlecraft</i>	1	1	1
<b>Engines and Power Data</b>			
<i>Total Power Units Available</i>	19	22	19
<i>Movement Point Ratio</i>			
unloaded	2/1	3/1	1/1
loaded	3/1	4/1	2/1
<i>Warp Engine Type</i>	FWA-2	FWH-1	FWA-2
Number	2	2	2
Power Units Available	8	10	8
Stress Charts	J/M	Q/R	J/M
<i>Maximum Safe Cruising Speed</i>			
unloaded	Warp 6	Warp 5	Warp 7
loaded	Warp 5	Warp 4	Warp 6
<i>Emergency Speed</i>			
unloaded	Warp 8	Warp 6	Warp 9
loaded	Warp 7	Warp 5	Warp 8
<i>Impulse Engine Type</i>	FIA-3	FIB-1	FIA-3
Power Units Available	3	2	3
<b>Weapons and Firing Data</b>			
<i>Beam Weapon Type</i>	None	None	FH-12
Number			2 in 1 bank
Firing Arcs			p/f/s
Firing Charts			R
Maximum Power			6
<i>Damage Modifiers</i>			
+2			(1-9)
+1			(10-16)
<b>Shields Data</b>			
<i>Deflector Shield Type</i>	FSA	FSC	FSB
Shield Point Ratio	1/1	1/1	1/2
Maximum Shield Power	11	12	11
<b>Combat Efficiency</b>			
<i>D-- (unloaded/loaded)</i>	33.8/29.5	31.3/29.0	77.2/50.2
<i>WDF--</i>	0.0	0.0	9.8
<i>CE-- (unloaded/loaded)</i>	0.0	0.0	7.6/4.9



Updated from The Triangle Campaign and Mines of Selka, with additional information and material from Ship Construction Manual, 2nd edition by FASA. Artwork from Trader Captains and Merchant Princes and The Orions: Book of Deep Knowledge by FASA. Compiled by Lee Wood ([FASAFan@hotmail.com](mailto:FASAFan@hotmail.com)). Edited by Bobby Todd ([starbase10@comcast.com](mailto:starbase10@comcast.com)). Version 3.3.

### Notes:

Designed as a light freighter, the *Tavares* class has served with Starfleet and the civil sector for many years in that capacity. With a cargo capacity of 45,000 tons, these ships ply the spacelanes carrying out the duties of the Materiel Command. These vessels are not only used by Starfleet but are also found in the civil sector. The 1,226 vessels produced for Starfleet account for only one-fourth of the total built. These small freighters can usually be seen at any starport throughout the Federation and the Triangle.

The typical *Tavares* can carry 800-900 SCUs of cargo. This cargo can be loaded and unloaded via the cargo transporters aboard directly to the cargo bay. The cargo bay can also be accessed via the aft cargo bay doors. A variant is available that is fitted with two large cargo bay doors mounted dorsally. The floor plans of these models are different than the standard Mk's.

The Type Q is a research vessel specially built for Starfleet Intelligence Command. Though they appear to be identical to visual and casual sensors scan, these ships use a different warp and impulse drive system that allows them to travel at considerably higher warp speeds and gives them a more efficient maneuver capability than the standard model. To get this increase in the vessel's performance, sacrifices were made in the cargo capacity and in some crew comforts. This model carries a bank of two phasers mounted in the bow and disguised in the forward sensor array; this mounting is so well concealed that it is virtually impossible to detect on a sensor scan unless the weapon is operational. Though considered by some to be "a wolf in sheep's clothing", the *Tavares* is hardly that, considering its weak superstructure and lack of extensive armament.

Of the 1,416 Mk Is and 5,543 Mk IIs built, approximately 1,107 Mk Is and 5,316 Mk IIs are still in service. One thousand, two-hundred and twenty six of the Mk IIs were built for Starfleet. The remaining are listed as either lost, stolen, scrapped, or destroyed.

Of the 1,226 Mk II vessels built for Starfleet, 985 remain in active service, while 72 have been scrapped, 122 lost for various reasons, and 40 sold to the private sector. The seven that were converted to Type Q models remain in operation somewhere.

The *Tavares* takes its name from a late 20th-century personality responsible for the Terran movement to populate nearby planets and thus begin their expansion into the galaxy.

