

Fenlon Class V Monitor/Planetary Defense Ship



Construction Data

<i>Model Numbers</i>	Mk II	Mk IV	Mk V
	2255-2273	2264	2289
<i>Date Entering Service</i>	(1/9701-2/1512)	(2/1010)	(2/2506)
<i>Number Constructed</i>	620	587	400

Hull Data

<i>Superstructure Points</i>	14	14	14
<i>Damage Chart</i>	C	C	C
<i>Size</i>			
Length	120m	120m	120m
Width	120m	120m	120m
Height	120m	120m	120m
Weight	49,330 mt	49,335 mt	49,645 mt

Cargo

Cargo Units	1000 SCU	1000 SCU	1000 SCU
Cargo Capacity	50,000 mt	50,000 mt	50,000 mt
Landing Capability	None	None	None

Equipment Data

<i>Control Computer Type</i>	M-1	M-1	M-1
<i>Transporters</i>			
standard 6-person	3	3	3
combat 20-person	1	1	1
emergency 22-person	1	1	1
cargo	1	1	1

Other Data

<i>Crew</i>	72	76	80
<i>Passengers</i>	20	20	20
<i>Troops</i>	20	20	20
<i>Shuttlecraft</i>	6	6	6

Engines and Power Data

<i>Total Power Units Available</i>	27	30	30
<i>Movement Point Ratio</i>	2/1	2/1	2/1
<i>Warp Engine Type</i>	FSLB	FSLB	FSLB
Number	2	2	2
Power Units Available	12	12	12
Stress Charts	L/P	L/P	L/P
Maximum Safe Cruising Speed	0.9 c	0.9 c	0.9 c
Emergency Speed	0.9 c	0.9 c	0.9 c
<i>Impulse Engine Type</i>	FIC-2	FIB-3	FIB-3
Power Units Available	3	6	6

Weapons and Firing Data

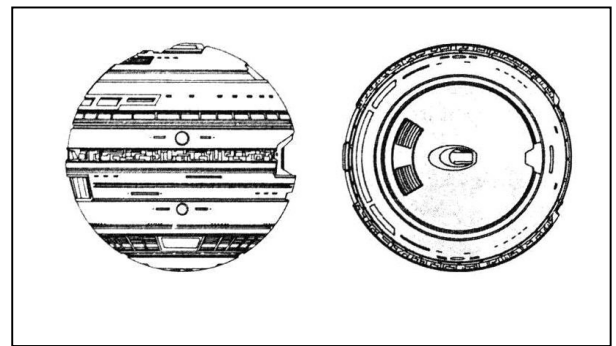
<i>Beam Weapon Type</i>	FH-2	FH-4	FH-4
Number	10 in 5 banks	10 in 5 banks	
Firing Arcs	2f, 4p, 4s	2f, 4p, 4s	2f, 4p, 4s
Firing Chart	H	Q	Q
Maximum Power	3	3	3
Damage Modifiers			
+3			
+2		(1-8)	(1-8)
+1	(1-10)	(9-14)	(9-14)
<i>Missile Weapon Type</i>	None	None	FP-2
Number			2
Firing Arcs			1f, 1a
Firing Chart			H
Power To Arm			1
Damage			6

Shields Data

<i>Deflector Shield Type</i>	FSD	FSF	FSH
Shield Point Ratio	1/2	1/2	1/2
Maximum Shield Power	8	12	14

Combat Efficiency

<i>D--</i>	69.0	79.0	30.0
<i>WDF--</i>	13.0	26.0	82.0
<i>CE--</i>	9.0	20.5	24.6



Notes:

The *Fenlon* is the only monitor class in Starfleet. Because ships of what is currently termed the monitor type are generally used to patrol and maintain over subjugated worlds. The UFP has little need for a vessel of this type, except near the borders. These ships patrol border systems and protect them from marauders and pirates.

The monitor definition is under review in Starfleet. Historically, Starfleet used the monitor designation for vessels used in planetary bombardment missions prior to assault by marines or other ground troops. As these vessels were often slow, the definition was later applied instead to ships such as the *Fenlon*. A new generation of marine assault support craft, currently being proposed, has meant that Starfleet has to reconsider its use of the monitor term. As such, it is likely that the *Fenlon* class, and any future successors, will be reclassified as planetary defense ships.

In design concept, the *Fenlon* is radically different to all other contemporary Federation designs, harkening back to the *Archon* and *Horizon* class cruiser primary hulls of the late 22nd century. There is still some support for the spherical hull in Starfleet circles for use in roles where warp dynamics are less important than usable volume.

Fenlons are usually moved to their deployments by specially converted pusher transports of the *MoKaI* class (a train of ten at once can be accommodated), or towed behind the *Kethkin* class (up to six at once). In the event of a major war, a contingency plan would see single *Fenlon* class vessels mated with a *MoKaI* class transport to produce an auxiliary cruiser, a concept similar to that of the *Achernar* and *Tikopai* classes from the Four Years War.

The *Fenlon*'s spherical hull design is a drastic departure from normal Starfleet designs. The engines are mounted centrally and are difficult to locate on a visual scan. The sub-light drive system is capable of moving the *Fenlon* at 0.9 c for periods of up to six months. Of course, being in system or at a border outpost because their limited top speed limits their range, the monitors will seldom need this capability because they are always near their supply depots.

The *Fenlon* class monitor is seldom found alone. Its primary function is to support the cutters that are operating in the area. It will act as a heavy support vessel when the cutters have encountered a ship that they cannot deal with alone. The *Fenlon*, with its ten phasers, is an unwelcome sight to smugglers, pirates and marauders.

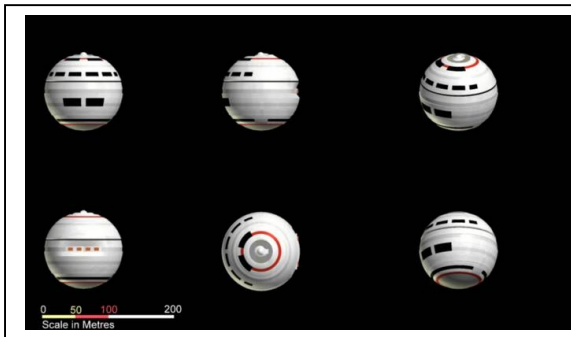
The *Fenlon*'s immense hanger bays can hold up to 50,000 mt of craft, or in more practical terms a pair of cutters or a flight of six *Scorpio* class corvettes. As such, in many remote areas of the Federation, the *Fenlon* acts as a combination of carrier, mother ship, and tender to a number of small craft. Generally, a *Fenlon* will launch all such craft before entering combat, as maneuverability is 33% better when unladen.

For most of its service career, the *Fenlon* relied purely on phasers. The recently introduced Mk V added a pair of FP-2 torpedoes. Although relatively light-weight weapons, these do add a significant additional punch to the class. All new builds are now Mk V and a program is being instituted to refit other ships in the field to this specification. It is planned that all operational vessels will be upgraded by 2300 (2/36). The *Fenlon* class has no planned out of service date, as stresses on the hull are relatively low compared to conventional starships. It may be possible that some survive until the mid 2350s (2/86).

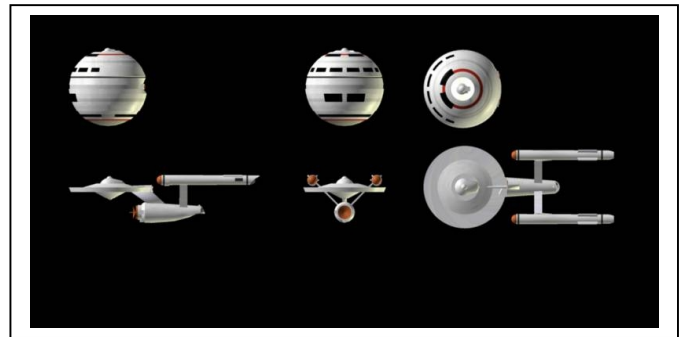
Although the *Fenlon* is chiefly used in more remote areas, a number are deployed near the core areas of the Federation as part of the "Defense Perimeter" Strategy, which includes the Mars Defense Perimeter in the Sol sector. The *Fenlon* is deemed ideal for such deployments near heavily populated worlds as the lack of a matter/anti-matter reactor is deemed a positive in the event of a major accident aboard ship. The downside of this strategy is of course an almost inevitable lack of warp powered starships at such strategic locations as Earth.

Of the 1,046 *Fenlons* built, 288 Mk IIs, 141 Mk IVs and 387 Mk Vs remain in active service, with 148 Mk IIs and 71 Mk IVs in reserve fleets. One of each type is used by Starfleet Training Command; 132 Mk IIs and 71 Mk IVs have been destroyed; 4 Mk IIs and 3 Mk IV are listed as missing; 41 Mk IIs and 11 Mk IVs have been scrapped; and 6 Mk IIs and 2 Mk IVs have been sold to private commercial concerns.

The *Fenlon* is produced at the Alpha Centauri shipyards at a rate of 2 per year.



Fenlon perspective views



Fenlon class and *Constitution* class size comparisons

Changes in FASA Mk II and IV:

- Mass slightly adjusted due to component weights.

Updated and expanded from Federation Ship Recognition Manual, 2nd editions by FASA. Additional material from Ship Construction Manual, 2nd edition by FASA. Ship schematics courtesy of www.shipschematics.net. Original text and graphics by Steven Bacon (<http://homepage.ntlworld.com/steven.bacon>). Edited by Lee Wood (FASAFan@hotmail.com). Version 3.1.