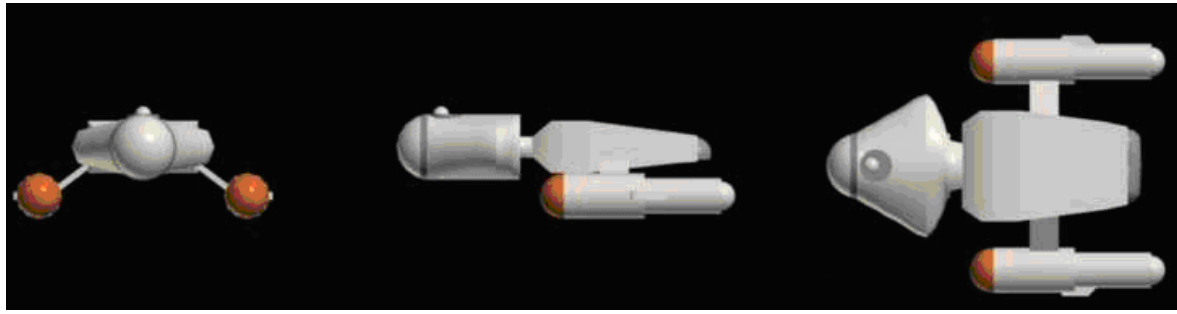




Eagle Class IV-V Starliner/Assault Ship/Freighter



Construction Data

<i>Model Numbers</i>	Mk I	Mk IIa	Mk IIb	Mk IIc	Mk III
<i>Ship Class</i>	IV	IV	V	V	V
<i>Date Entering Service</i>	2246 (1/89)	2251 (1/94)	2252 (1/95)	2252 (1/95)	2253 (1/96)
<i>Number Constructed</i>	46	42 (Mk I refits)	86	72	51

Hull Data

<i>Superstructure Points</i>	11	11	11	11	10
<i>Damage Chart</i>	B	B	B	B	B
<i>Size</i>					
Length	250 m	250 m	250m	250m	250m
Width	75 m	75 m	75 m	75 m	75 m
Height	45 m	45 m	45 m	45 m	45 m
Weight	26,360 mt	26,360mt	58,710 mt	58,710 mt	56,210 mt

Cargo

Cargo Units	260 SCU	260 SCU	160 SCU	324 SCU	475 SCU
Cargo Capacity	13,000 mt	13,000 mt	8,000 mt	16,200 mt	23,750 mt
Landing Capability	None	None	None	None	None

Equipment Data

<i>Control Computer Type</i>					
<i>Transporters</i>	L-14	L-14	M-1	M-1	M-1
standard 6-person	4	4	4	4	4
combat 20-person			4	4	4
emergency 22-person	6	6	2	2	2
cargo, small	2	2	3	3	3
cargo, large			2	2	2

Other Data

<i>Crew</i>	32	34	36	36	34
<i>Passengers/Troops</i>	1000	1500	1600	450	110
<i>Shuttlecraft</i>	2	2	5	4	4

Engines and Power Data

<i>Total Power Units Available</i>	22	22	22	22	22
<i>Movement Point Ratio</i>					
unloaded	3/1	3/1	2/1	2/1	2/1
loaded	3/1	3/1	3/1	3/1	3/1
<i>Warp Engine Type</i>	FWH-1	FWH-1	FWB-1	FWB-1	FWB-1
Number	2	2	2	2	2
Power Units Available	10	10	9	9	9
Stress Charts	Q/R	Q/R	M/O	M/O	M/O
<i>Maximum Safe Cruising Speed</i>					
unloaded	Warp 5	Warp 5	Warp 7	Warp 7	Warp 7
loaded	Warp 5	Warp 5	Warp 6	Warp 6	Warp 6
<i>Emergency Speed</i>					
unloaded	Warp 6	Warp 6	Warp 8	Warp 8	Warp 8
loaded	Warp 6	Warp 6	Warp 7	Warp 7	Warp 7
<i>Impulse Engine Type</i>	FIB-1	FIB-1	FIB-2	FIB-2	FIB-2
Power Units Available	2	2	4	4	4

Weapons and Firing Data

<i>Beam Weapon Type</i>	FL-1	FL-1	FL-1	FL-1	FL-1
Number	1	1	6	6	4
Firing Arcs	f	f	2f,1p,1s,2a	2f,1p,1s,2a	2f/p, 2f/s
Firing Charts	D	D	D	D	D
Maximum Power	2	2	2	2	2
Damage Modifiers	None	None	None	None	None

Shields Data

<i>Deflector Shield Type</i>	FSA	FSA	FSA	FSA	FSA
Shield Point Ratio	1/1	1/1	1/1	1/1	1/1
Maximum Shield Power	9	9	8	8	8

Combat Efficiency

<i>D-- (unloaded/loaded)</i>	38.7/38.7	38.7/38.7	44.7/39.2	44.7/39.2	43.3/37.8
<i>WDF--</i>	0.4	0.4	2.4	2.4	1.6
<i>CE-- (unloaded/loaded)</i>	0.2/0.2	0.2/0.2	1.1/0.9	1.1/0.9	0.7/0.6

Notes:

The *Eagle* class starship has served as a starliner, an assault transport and as a freighter during its illustrious history. As a starliner, it was the most luxurious of its time. Pressed into service in a military role during the Four Years War, it transported thousands of Starfleet Marines to critical battles during that conflict. It was also converted into an efficient freighter which continued to serve in Starfleet after the war.

The *Eagle* class Mk I was the starliner upon which all other models were based. The *Eagle* class was designed and built by Phoenix Enterprises, Limited and the first ship was commissioned in 2246 (1/89). By 2251 (1/94), Phoenix Enterprises had established a thriving private tourist and spacefaring industry within the general area of the original boundaries of the Federation. Luxurious tours were available to destinations such as Betelgeuse, New Paris and Mursa, as well as "the Founding Father's tour" to Vulcan, Earth, Alpha Centauri, Andor and Tellar. Routes were also established for the practical traveller, such as business representatives and the like, between major planetary systems.

At the outbreak of hostilities in 2251 (1/94) between the Federation and the Klingon Empire, Starfleet found itself with an almost complete lack of sufficient troop and materiel transports to effectively distribute its ground forces to prepare for and defend against Klingon planetary assaults. Almost simultaneously, representatives from Starfleet and Phoenix Enterprises contacted each other with the proposition of pressing the *Eagle* class into military service. This joint effort went off without a hitch and still stands today as one of the best examples of Federation patriotism during the Four Years War.

Hastily converted *Eagle* class starliners became the Mk IIa assault ship. The once spacious cabins of the former starliners now held three to six marines apiece. Dining areas and gymnasiums, theaters and arboretums became staging areas for military equipment and supplies. The emergency transporters aboard doubled as combat transporters, although during the early stages of the war, the ships were not involved in actual assaults since the Federation was wholly on the defensive. Many of the crews of the former starliners insisted that they be field-commissioned and allowed to serve aboard their vessels- a request which Starfleet happily approved.

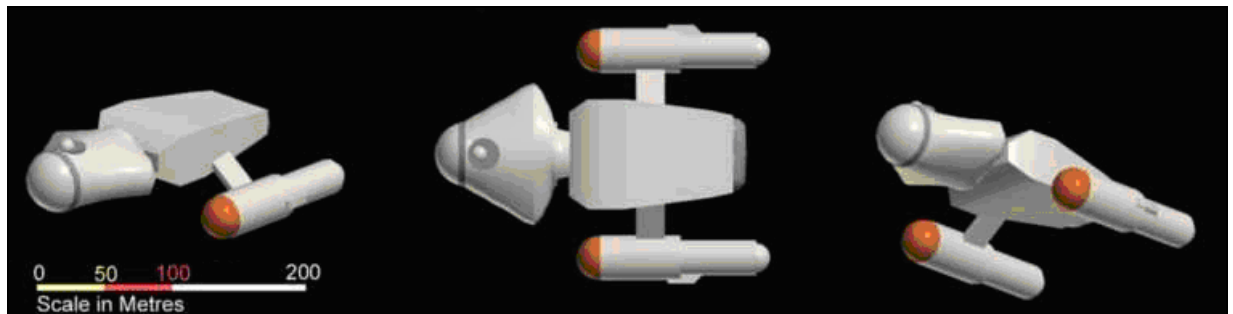
After Starfleet's number of Mk IIa assault ships grew as the existing starliners were converted, production began on the new Mk IIb and Mk IIc class. The Mk IIb *Eagle* served as a true, modern assault ship, with provisions for 1600 marines and their equipment, plus enough cargo space for light vehicle support. The Mk IIb's and Mk IIc's were fully outfitted with combat transporters and expanded cargo transporters. The ships were also outfitted with FWB-1 engines, which replaced the FWH-1 engines on the earlier models. This allowed the vessel to attain higher warp speeds and lessened the time needed to plan and engage in assaults.

The Mk IIc assault ship had an expanded cargo area and served as a heavy equipment assault ship (although as a consequence, it carried fewer troops). It could transport five medium tanks and 18 light-support vehicles along with the marines required to operate and maintain the equipment. It could also carry additional marines to supplement the heavy equipment. It also doubled as a munitions carrier and emergency space-borne field hospital in some instances.

Both the Mk IIb and IIc had a formidable array of FL-1 lasers. These lasers provided orbital fire support for marines below. Six batteries of lasers were at the command of the planetside marines, ready to support their attacks. Indeed, many *Eagles* risked their own safety rather than leave their embattled planetside troops to provide those troops with fire support.

The Mk III *Eagle* was similar to the Mk IIb and IIc models except for its enlarged cargo area (again at the expense of troop capacity). It served as a military transport and was found right at the front lines during the Four Years War.

The *Eagle* class served Starfleet well during the war and quickly earned the admiration of the average grunt which it transported to battle. With the *Eagle* in service, fewer and fewer troops had to be transported in converted freighters and transports. Instead, they rode into battle in a ship which didn't leave after it transported its troops. Rather, the *Eagle* stayed and fought on with the marines it had landed. It was this type of tenacity which earned the *Eagle* the respect of the Starfleet Marines.



Updated and expanded from Star Trek: Spaceflight Chronology by Stan and Fred Goldstein and Starship Construction Manual, 2nd edition, The Federation, and The Four Years War sourcebook by FASA. Revised Statistics and History by Lee Wood (fasaan@hotmail.com). CG image by Steve Bacon (vintagestarships.tripod.com). Compiled by Steve Bacon. Version 3.1.